



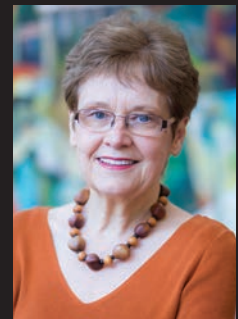
## Celebrating Drew's 150-Year History

By Matthew Beland, *University Archivist*

As the celebration nears for Drew's sesquicentennial, it's rewarding, albeit somewhat daunting, trying to take stock of the many milestones marking the past century and a half. Tucked in among the high points are, well, a few challenges, obstacles overcome that have contributed to the overall character and endurance of The Forest. We can take pride in that, especially when we delve into why these events occurred and how Drew managed to resolve them successfully. Being the repository of this institution's collective history, the University Archives is well suited for exactly this kind of retrospective.

One such challenge took place in 1868 when the university, then known as Drew Theological Seminary, was still in its infancy. Financier and railroad tycoon Daniel Drew purchased the school grounds and endowed the seminary, which was to receive quarterly cash payments of 7 percent interest based on his \$250,000 investment in the stock market. He provided the main, if not sole, financial support for the school. Unfortunately, that support gave way in late 1876 when the robber baron, who'd made upwards of \$13 million on the stock exchange, lost it all. Overnight, the seminary's endowment evaporated, and the school could no longer produce any substantive income.

*continued on page 6*



## Fond Farewells

In June, Drew Library bid farewell to a pair of longtime staffers and friends.

By Kathy Juliano, *Interim University Librarian*

Reference Associate Bruce Lancaster has been a presence in the library since 1972, when he was a student assistant while working on a Bachelor of Divinity degree. When he realized that a B.D. would lead to a job that required writing weekly papers (aka sermons), a permanent role in the library started looking better and better to Bruce. After several years working in the library's Circulation Department, Bruce moved over to the Reference Department in 1998, where his knowledge, humor and patience proved to be great attributes, especially with students and their queries—he's fielded everything from "Where are the nonfiction books?" to "Does the sun rise in the east or

*continued on page 2*

## University Librarian's Corner



When a great book turns 150, it inevitably manifests some signs of age: frayed pages, a worn spine, a binding that's grown a bit loose. The content, though, still shines through, no matter how dog-eared its shell. A great university is no different. As Drew celebrates its sesquicentennial, we're happy to say that the university and its venerable library remain remarkably strong and vibrant institutions.

Since June 2014, the library has undergone three changes in leadership, as well as a reworking of its physical space, notably the new Academic Commons on the main level, and changes to its staff, including the appointment of new Librarians and the retirements of longtime staffers Deborah Strong and Bruce Lancaster. I was asked by Drew Provost Debra Liebowitz to lead the library as interim university librarian upon the departure of Chris Anderson, our former associate dean of libraries. A search is now underway for a new university librarian, a job title that's also a departure from our previous library leadership. This new position fits appropriately into the restructuring of the academic administration of the three schools of Drew University and appointment of the provost.

What has not changed is our commitment to be of service to our users, the faculty and students of Drew University. That said, in this issue of *Visions*, we'll explore both Drew's past and present and how the library continues to fulfill a crucial role in the university's mission. University Archivist Matthew Beland examines how Drew overcame several daunting challenges during its 150-year history, from a stock loss in the 1870s to a major fire in the 1980s. Reference Librarian Margery Ashmun takes a look at how our staff often goes above and beyond what's required in helping our users. And Dr. Jesse Mann sits down for a one-on-one chat with Professor Elias Ortega-Aponte about teaching and life at Drew.

This is an exciting time for the university and our library, and we look forward to more interesting changes as we welcome a new leader. I'm grateful to the library staff for their dedication and willingness to embrace change in pursuit of our goal: "To support and advance the educational mission of the university by facilitating access to scholarly collections and information resources."

Kathy Juliano

*Interim University Librarian  
and Electronic Resources and  
Serials Management Librarian*

### FOND FAREWELLS

*continued from page 1*

west?" When not helping patrons, Bruce was often charming co-workers with tales of his colorful life, be it about odd pets (he once owned a coatimundi), his world travels or the unusual ensemble of tchotchkes gracing his somewhat disheveled office shelves.

It's hard to imagine life at Drew without Debby Strong. As administrator for the library, Debby has done her best to make our workplace feel like a home away from home. Her talents are many: managing our budget, planning events from fundraising galas to office parties, recruiting student staffers, solving paycheck issues, nurturing the library's thriving greenery and be-

ing to the go-to person when something breaks, leaks or runs out of ink. She's the engine that's kept our library running—and running smoothly. After starting in 1993 as part-timer in Circulation, working until midnight once a week, Debby went full-time and was promoted to her current job in 1999. Over the past two decades she's welcomed five directors to the library, providing guidance and a steady, seasoned hand during times of transition.

We wish Debby and Bruce all the best in their retirement and future endeavors, and we hope that they come back periodically to say hello to their family at Drew. We'll miss them much.

# VISIONS.

**Kathleen Juliano**  
Interim University Librarian  
Drew University Library

Editors: **Deborah Strong, Marc Boisclair**  
Online Edition: **Jennifer Heise**

A complete online archive of past issues of *Visions* can be viewed at [drew.edu/library/visions](http://drew.edu/library/visions).

## Elias Ortega-Aponte on Poets, Page-Turners and Dinner Guests

By Dr. Jesse Mann, *Theological Librarian*

### What are you reading currently?

I am usually reading several books at once. Right now: *The Three-Body Problem* by the Chinese writer Liu Cixin; Isaiah Berlin's *The Crooked Timber of Humanity: Chapters in the History of Ideas*; *Teaching Critical Thinking* by bell hooks; *What Algorithms Want: Imagination in the Age of Computing* by Ed Finn; and *Directed by Desire: the Collected Poems of June Jordan*.

### You've ordered some interesting books for classes you've recently taught. How do you select the books you order?

I order books with an eye toward providing a guide for student research and toward expanding the library's collection.

### Where and when do you read best?

I don't have a dedicated reading chair. I read my Kindle in bed. I read all over the place.

### What book has had the greatest impact on you?

Although I am not a Kantian, Kant's *First Critique (The Critique of Pure Reason)*. After that, everything became easier to read. And Lucille Clifton's poetry—it formed my ethics.

### If you could require Theo students to read one book, which book would it be?

David Whyte's *Crossing the Unknown Sea: Work as a Pilgrimage of Identity*.

### And if you could require the Drew faculty to read one book, which book would that be?

Claudia Rankine's *Citizen: An American Lyric*. It's a complex exposition of racism in the USA.



### Does format (i.e., print vs. digital) affect the kind of reading you do, and if so, how?

Format doesn't have much impact on my reading. I do read poetry in print. Ebooks afford portability (and thus variety).

### Which book do you feel most guilty about not having read?

I asked for and received Spivak's *A Critique of Postcolonial Reason* as a Christmas present, but it defeated me.

### What's the book that you would really like to write?

I'd like to "write" a graphic novel about social structures that also makes use of technology.

### Is there a particular reading experience that stands out for you?

Derek Walcott's *Omeros*. I have enjoyed it so much that I have not wanted to finish it.

### What else should we know about your reading habits?

If I am not captured by page 30 of a novel, I stop reading. I read more fiction than academic writing. My academic reading I do in the morning. Thereafter it's fiction, essays, poetry, etc.

### I know you read a lot of poetry. Is there a poet you would especially recommend and why?

Just one poet? That's too limiting. Some I've already mentioned: Walcott, Rankine, Clifton. I'd add Mary Karr (*Sinners Welcome*), Ross Gay (*Catalog of Unabashed Gratitude*) and Naomi Shihab Nye.

### As professor of Latino/a Studies, you may have special interest in the library's Spanish-language holdings. How would you assess those holdings?

There are some real gaps, mainly in literature. I'd like to see greater range. But I am sometimes surprised by what we do have. For example, José Martí. I'd like to have more Spanish-language history and philosophy. Mostly I use these materials for my own research, not so much for my teaching.

### If you were hosting a dinner party and could invite three authors (living or dead), whom would you invite?

Hunter S. Thompson, Mayra Santos-Febres and Canada's former poet laureate Dionne Brand.

## VISIONS.

### Born to Read

By Marc Boisclair, *Circulation Supervisor*

When Anne Noss retired from Drew's Reference Department in 2005, she left behind goodwill aplenty, not to mention a greater appreciation for rock and roll—the music of Bruce Springsteen in particular. Anne met her husband Jeff, now a Drew trustee, when they were both university undergrads. She joined the library staff in 1989, earned a masters in library science and joined Reference in 1999, becoming the library's first web manager.

Thanks to a recent donation from the Noss family, Guy Dobson, Drew Library's systems administrator and liaison to the Music Department, was able to purchase a collection of more than two dozen rock-and-roll books, including historical tomes and biographies of such musical icons as Keith Richards, Jimmy Page, Neil Young and—of course—The Boss. As a passionate Springsteen fan, Anne attended concerts regularly (both stateside and overseas) and founded and organized the Friends of Bruce Springsteen Archive, a major part of the Bruce Springsteen Archives and Center for American Music, now housed at Monmouth University.

We appreciate Anne and Jeff Noss (C'75—the same year that Springsteen made the covers of both *Time* and *Newsweek*) for their generosity and unflagging rock-and-roll spirit.



## Drew's Academic Librarians: Prepared for Anything

By Margery Ashmun, *Reference Librarian*

At Drew University Library, our academic librarians are tuned in to the needs of 2017's students, using our multitasking skills on a regular basis. More than just savvy researchers, we can be amateur actors, MacGyver-like repair people and ambassadors of goodwill. No matter the challenge, we stand ready to play the right role for patrons in need.

Need a walk-on for an on-location film shoot? Drew's pros can provide the gravitas necessary to accurately portray professional librarians, taking their screen time as seriously as De Niro or Streep. Dr. Rick Mikulski, Drew's documents and reference librarian, demonstrated his acting chops by playing himself for student filmmakers during a recent film shoot. Mikulski agreed to the star turn with one important caveat: that the scriptwriter depict Drew's library with accuracy and respect. For the scene in question, Mikulski adroitly guided the actors to a specific tome in the library's collection by providing them with the actual call number and shelf location of the book—no need to check [moviemistakes.com](http://moviemistakes.com) here.

For anyone suffering a footwear fail, our librarians can cobble together a shoe solution to make Carrie Bradshaw smile. Reference Librarian Jennifer Heise recently provided MacGyver-like guidance to a student whose flip-flops fell apart by offering emergency supplies (paper clips and tape) and some basic repair coaching. A short time later, the student left the library appropriately shod and at peace with her apparel. I encountered a graduate student whose presentation-ready appearance was marred by one heel-less black pump. Duct tape and black Sharpie cured that ill, after which my student strode confidently out of the library, ready to give a "perfectly balanced" class performance.

Drew librarians have also developed expertise as emissaries. Interim University Librarian Kathy Juliano recalls an incident during her tenure as head of InterLibrary Loan that required some smooth negotiating skills. A student needed access to a database that Drew did not have, so Juliano went the extra mile by locating it at Princeton University. Kathy then contacted a staff librarian at the

Ivy League library, who also happened to be a former professor during her master's program at Rutgers. After explaining the situation, Kathy successfully negotiated database access for this Drew student at a university library that rarely opens its door to outsiders. In another instance, Jennifer and I assisted a CLA student who'd invoked the 21st-century equivalent of "my dog ate my homework"—a computer had swallowed up her critical notes for an impending assignment. We penned a "please excuse" note to the professor in question and successfully paved the way for a negotiated assignment extension of about a week. That said, a cautionary note to future students considering postponing their paperwork: All potential excuses will be scrupulously vetted.

Is it serious training and practice or simply innate skills that equip Drew librarians with their ingenious problem-solving abilities? A bit of both, probably. Regardless, the word is out: Drew librarians stand ready to help, be it in academics (yes, research) or a wardrobe malfunction.

## Student Snapshots

The staff of the library and Instructional Technology Department rely on the dedication of over 60 student staffers to keep our operations running smoothly. Here are snapshots of four of our wonderful students.



### Ryan Cassidy

**Studying:** Public Health and Environmental Science/Sustainability  
**Year:** Sophomore  
**Job title:** Information Technology Student Assistant

**Duties:** Computer software/hardware troubleshooting; Duo Security enrollment and troubleshooting; directing incoming calls to departments across campus.

**Most satisfying part of the job:** Teaching others about technology, from learning how to access email on a phone to using software to transfer spreadsheets for a statistics class.

**Skills learned:** How to utilize interpersonal skills and use software programs that I'd never come across before, such as Duo Security and SPSS (Statistical Package for the Social Sciences).

**In-house getaway:** There are two comfy chairs overlooking Mead Hall's lawn that I love to relax in.

**Notable checkout:** I've never actually checked anything out of the library.

**Post-Drew goals:** A master's in public health and a PhD in infectious disease epidemiology. My ultimate goal is to become a field epidemiologist with Doctors Without Borders.



### Leif McLellan

**Studying:** Master of Divinity  
**Year:** Second  
**Job title:** Reference and Research Student Assistant

**Duties:** Helping patrons find library books and access online resources for projects and papers and doing special cataloging projects.

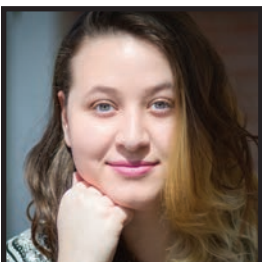
**Most satisfying part of the job:** Getting to know the staff and students, especially those whom I see sprouting roots in particular places around the library.

**Skills learned:** Navigating the online resources the library provides and accessing them to help students and community members with their work.

**In-house getaway:** I love the squishy chairs near the microfiche on level A, as well as the Kean Room with its lovely polished tables and quiet atmosphere.

**Notable checkout:** Many commentaries on *The Book of Ruth* (for my "Ruth" class) in order to develop a personal, useful bibliography for further study of that book.

**Post-Drew goals:** I hope to go on to a Lutheran parish ministry.



### Noelle Spitz

**Studying:** Biological Anthropology  
**Year:** Sophomore  
**Job title:** Circulation Student Assistant

**Duties:** Checking out books and reserve materials; shelving and shelf reading—checking that call numbers on a particular set of shelved books are all in order.

**Most satisfying part of the job:** I really love shelving. It's peaceful, and I get to look at different books and maybe find something interesting.

**Skills learned:** Using the Library of Congress filing system.

**In-house getaway:** If I have a lot of work to do I go to the F level. If I want to read or relax between classes I like the armchairs on level E.

**Notable checkout:** A 1988 *Oak Leaves*, the Drew yearbook—I was curious to see what my high school Latin teacher looked like in his senior year at Drew.

**Post-Drew goals:** A doctoral degree, then work in forensics with a museum or even a research program helping to identify bones.



### Samantha Depierro

**Studying:** Theatre and Computer Science  
**Year:** Junior  
**Job title:** Special Collections Student Assistant

**Duties:** Processing the David Johnson Collection of Science Fiction and Popular Culture, and working on the Governor Thomas H. Kean Papers.

**Most satisfying part of the job:** I love organizing the collections I'm working on and finding cool things within each of them.

**Skills learned:** How to stay organized and focused, as well as a lot about special collections in general.

**In-house getaway:** The Wilson Reading Room in the Archives Building—it's usually very quiet, which makes it great for studying and focusing.

**Notable checkout:** *Of Chastity and Power: Elizabethan Literature and the Unmarried Queen*. For an essay about Elizabeth I, it was exactly the information I needed and an interesting read.

**Post-Drew goals:** I hope to find a job that allows me to express my creativity as well as use my analytical side.

## VISIONS.

### SESQUICENTENNIAL

*continued from page 1*

Treasurer's reports from 1876 and 1877 in the archives illustrate this drastic change. The 1876 report proudly records Daniel Drew and his annual investment income of \$10,820. Just a year later, though, the eponymous founder is gone from the report, substituted by a smattering of three or four loyal donors who had each made quarterly or semiannual payments of \$1,000 at most. Even within the treasurer's clinically descriptive notations, one can sense a level of desperation.

Once Daniel Drew's loss became common knowledge, there were some who advocated selling off the school's assets—its buildings—in order to remain solvent. But Drew President John Fletcher Hurst and the school's faculty would have none of that. For the next three years, Hurst traveled around the country and abroad in a quest for funding. Hat in hand, he asked for donors to save the seminary. While on the road he once wrote to his wife, "Mine is to be immortality, if any, of making good the money that Wall Street has swallowed up." Meanwhile, back on campus, the faculty frequently went without pay, forcing Hurst to dole out some of his paycheck just to keep them afloat. Their perseverance eventually paid off, though. By April 22, 1880, the

combined efforts of Hurst, his faculty and their students brought in \$311,000 in new endowments—roughly \$6.8 million in 2017 dollars. The seminary was safe.

Perhaps the only other event that comes close to the 1876 debacle took place within living memory. On August 24, 1989, a routine maintenance project at Drew went horribly awry. What reportedly began as a "small fire in the wall of Mead Hall" eventually burned for 23 hours. Fire companies from 13 local towns were called in to subdue the flames. The formal announcement of the fire, written by Interim President Scott W. McDonald to the Drew community the following day, is sobering yet uplifting. McDonald wrote his letter both to describe the terrible event and to "reassure you that we expect to carry on with that indomitable Drew community spirit." Rather than accept defeat, the university leadership instead pushed for an appropriate restoration of the charred building. With the help of donations from the community and, admittedly, an excellent insurance policy, Mead Hall reopened in 1992. Drew could now boast that its most historic building had an interior that matched the elegance of its exterior.

A sesquicentennial speaks of resilience. These episodes in Drew's history confirm it.

## Recent Gifts

### THE LIBRARY GRATEFULLY ACKNOWLEDGES THE FOLLOWING GIFTS.

#### Financial Support

Mrs. Gail Atwood  
Dr. Suzanne Bowles  
Ms. Katherine G. Brown  
Mr. Tom Chiang, Jr.  
Mrs. Carol Childs  
Mr. Paul Luftig  
Mr. Victor Luftig and Ms. Elizabeth Fowler  
Ms. Lucy Marks  
Ms. Maria Del Pilar Paxton  
Mr. Robert S. Wafula

#### Gifts in Kind

Ms. Mary Alberi  
Mr. Leonard A. Barbieri  
Dr. Vivian A. Bull  
Mr. George Burrill  
Mr. T.J. Chiang  
Dr. Sloane Drayson-Knigge  
Dr. Deborah Hess  
Mr. Robert Hinds  
Dr. Eduardo Lolo  
Ms. Marsha Manns  
Dr. Johannes Morsink  
Dr. Phil Mundo  
Mr. Colin Reid  
Society of Biblical Literature  
Dr. William Stroker  
Mr. Dan Twomey  
Mr. Tom Twomey  
Westar Institute  
Mr. J.B. Yount III

#### Gifts in Kind to the Methodist Library

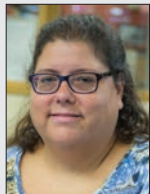
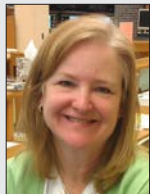
Ms. Julia Allen  
Mr. Bruce Carlson  
Mr. Charles Egleston  
Mr. Robert Paul Fitch  
Ohio Wesleyan University  
Ms. Paulette Snoby  
Rev. Ruth Widmann

## The Doctors Are In

May 2017 saw the opening of Drew Library's new Doctoral Student Lounge (aka The Rose Room), designed in part by the same students now enjoying the room's amenities: tables, easy chairs, fresh paint and carpeting, a full-size refrigerator and single-serve coffee maker. The collaborative project (conceived by library administrators and Caspersen and Theological School students) is available to Drew's 400-plus doctoral candidates, and funded by the President's Discretionary Fund, which was generously supported by a gift from Gates and Mary Ellen Hawn.



## Professional News



Reference Librarians **Margery Ashmun** and **Jennifer Heise** presented their poster *Out of the Box: Expanding Library Outreach to New Campus Groups* in April during the 2017 New Jersey Library Association's Annual Conference in Atlantic City, New Jersey.



**Jesse D. Mann**, theological librarian, represented Drew's Theological School at the Hispanic Summer Program in June at the North Theological Seminary in Chicago. His article, titled "Intellectual Freedom, Academic Freedom and the Academic Librarian," will appear in the next issue of *The Journal of Academic Freedom*, Vol. 8 (September 2017).



**Johanna Edge**, head of circulation, presented a paper at the Eighth International Conference on the State of Mark Twain Studies, held August 3-5, 2017, in Elmira, New York. The theme for this year's conference was "The Assault of Laughter." Her paper, "Satire as Subversion: Mark Twain and the Tragedy of Pudd'nhead Wilson," was part of a discussion of Twain and race.



**Rick Mikulski**, government documents and reference librarian, was awarded the 2017 Dean Pain Community Service Award by the Graduate Student Association of the Caspersen School. He was also an invited speaker at the Symposium on the Humanities Beyond the Academy (University at Buffalo New York, April 22, 2017).

He contributed two articles, "Higher Education" and "Primary and Secondary Education," to *World of Antebellum America: A Daily Life Encyclopedia* (edited by Alexandra Kindell, ABC CLIO). He wrote book reviews accepted by *College & Research Libraries*; *The Society for Historians of the Gilded Age and Progressive Era*; *Journal of Popular Culture*; *Studies in Popular Culture*; and the *Journal of Sports History*.



**Brian Shetler**, head of special collections and university archives and Methodist librarian, presented papers at the Mid-Atlantic Conference on British Studies in Maryland, the Translation Meets Book History Conference in Ireland and the Symposium on Medieval and Renaissance Studies in Missouri. In December, he was awarded the Lisa Nocks Student Award and the John R. Mulder Award from Drew's Caspersen School of Graduate Studies.

## Friends of the Library



Enclosed is my/our gift to the Drew University Library at the level of:

- Friend.....\$ 50
- Patron.....\$ 1,000
- Donor.....\$ 100
- Benefactor.....\$ 5,000
- Sponsor.....\$ 500

A check for \$ \_\_\_\_\_, payable to "Drew University Library," is enclosed.

- Please charge \$ \_\_\_\_\_ to:
- VISA    American Express    MasterCard

Account number \_\_\_\_\_ Expiration date \_\_\_\_\_

Signature \_\_\_\_\_

Name (please print) \_\_\_\_\_

Mailing address \_\_\_\_\_

City/State/ZIP \_\_\_\_\_

Telephone \_\_\_\_\_

Please return this form to:  
 Friends of the Library  
 Drew University Library  
 Drew University  
 Madison, NJ 07940

For more information, please call the library at 973.408.3471. Donations are tax-deductible to the fullest extent allowed by law.

# VISIONS.

## Library Events

### OUT OF THE VAULT SERIES Wilson Reading Room, Methodist Center



#### En Garde! The Art of the Weapon

Tuesday, September 5 | 4 p.m.

This special event will reveal some of the more rarely seen items in the archives: swords, knives, daggers, bullets and other weapon-related materials.



#### You Have...What? Oddities in the Archives

Tuesday, October 3 | 4 p.m.

Come explore some truly odd entities within Drew's archives, including the death mask of John Wesley, a lock of Lord Byron's hair and a pair of "lightning shoes."



#### Out of Sight: Our World through the Lens of Popular Culture

Tuesday, November 7 | 4 p.m.

Explore a potpourri of pop culture and entertainment at this fun and factual event, from science fiction magazines and graphic novels to *MAD Magazine* and Broadway playbills.

## LIBRARY EXHIBIT



### 150 Years in the Forest: Drew University 1867–2017

August 21–December 31, 2017  
Methodist Center and Main Library

This can't-miss exhibit, curated by Matthew Beland, will open a fascinating window into the 150-year history of Drew University. Take an illuminating tour of Drew's past through the records of its three schools, a vibrant student life and its storied athletic program.

## CONVERSATIONS ON COLLECTING

Hosted by the Friends of the Library  
Methodist Center Lobby

### Collecting Drew: Daniel and the University

September 2017

This sesquicentennial event brings together two archival specialists to discuss collecting at Drew. University Archivist Matthew Beland collects, preserves and showcases Drew University's past, while Professor Chris Taylor collects documents related to Daniel Drew, the university's namesake, who contributed to the founding of the school.

### LIBRARY CONTACTS.

**Call:** 973.408.3486

**Email:** [reference@drew.edu](mailto:reference@drew.edu)

**Online:** [drew.edu/library](http://drew.edu/library)

## SPECIAL EVENTS

### Citizen-Archivist Tagathon

Thursday, October 19, 2017 | 4–7 p.m.  
Library/Technology Classroom

If you love historical images and want to participate in an exciting digital scholarship initiative, join us as we review and label (i.e., tag) National Archive photos, paintings, advertisements and other images. Drew Library staffers will help you set up an account, provide training, answer questions and supply refreshments.

### 2017 Leslie Marchand Lecture & Reception

November 2017 | Methodist Center

The Byron Society of America will bring the first annual Leslie Marchand Lecture to Drew University. This new series honors the legacy of Marchand (1900–1999), who wrote the definitive biography of Lord Byron and was the leading authority on the poet. It brings scholars to Drew University to explore themes and topics related to Lord Byron and his work.