

Students to Vote on South African Investments

by Paul Babitts

In an effort to force the Drew Board of Trustees to take a firm stand on an issue that it has declined to address for several years, the SGA will conduct a referendum vote on the subject of Drew's investments in corporations doing business in South Africa.

Prior to the unanimous voice vote at a recent SGA meeting, several concerned students arranged for handbills to be handed out at the March 18 lecture by social activist Dick Gregory in Great Hall. These bright-colored flyers contained information about Drew's investment portfolio which includes a number of companies that conduct business in South Africa. The flyers added that these

companies are in a position to greatly influence the slowly evolving liberalizing changes in South African policies toward its black and Asian segments, but that they choose to take very little action in this direction.

Lucy Peabody and Kathy McCutcheon, two of the people involved in the writing and distribution of the handbills, said that the flyers were conceived with the intention of bringing attention to Drew's investment patterns and to a series of proposals put forth by this year's Nobel Peace laureate, Desmond Tutu.

Tutu's proposals call for American companies to recognize that black labor unions may not be registered with the South African government; to freely hire

blacks and Asians without regard to laws restricting the movement of and employment opportunities available to Africans; to enforce fair labor practices and to continue, as they do now, the funding of black education and training programs.

Perhaps the most radical of the principles is one that calls for American corporations to insure that their black workers will be permitted to live with their families near the place of employment despite ordinances segregating blacks and whites by residence areas.

In this way, according to Peabody and McCutcheon, companies such as Coca-Cola, I.B.M., and Citicorp would take part in civil disobedience on a

grand scale, forcing the South African government to make immediate changes in its racial policies or risk losing the vast amounts of American money upon which the South African economy is heavily dependent.

Wednesday's referendum asks whether Drew should divest itself of holdings in companies that participate in the South African marketplace. Once the student body has voted, the SGA will present the Board of Trustees with a request to either divest entirely of South African stocks, or to rearrange the portfolio so that only those corporations subscribing to Desmond Tutu's principles will be included in the investment plans.

Drew University
Vol. LVI No. 16

Madison, NJ 07940
March 22, 1985

The Acorn

SGA Presidential Elections: A Two-Sided Story



Jen Velez and Bob Duffy, vice presidential and presidential hopefuls.

by Rob Geist

STUDENT Government presidential elections are now less than a week away and the two tickets are continuing their campaign to fill the seats being vacated by current President Adam Glazer and Vice-President Lynda Blaney. The candidates for president are current Attorney General Steve Foster and Junior Class Senator Bob Duffy. Their running mates are, respectively, Hoyt Dorm Senator Amy Rosta and Sophomore Class Senator Jennifer Velez.

Before Spring Break, *The Acorn* was able to secure interviews with both Foster and Duffy. Questions ranged from the budget, athletic facilities, the alcohol policy, housing, racial awareness, and the major goal of their administration.

Concerning the budget, Foster said "I'm in favor of Drew getting the best for its money and I think right now that there's a lot of waste and inefficiency in the University." "One of our ideas is the creation of a task force by the Student Government Administration to look into waste and inefficiency in the College Administration," said Foster when asked

how he would combat this inefficiency.

Stating his case on the budget, Duffy said first "I agree with the student government that the figures that the Administration came in with were too high." However, according to Duffy, raising money for the endowment is the top priority. He feels that with a 35% decrease in college age students in the north east, Drew must begin to prepare for a decreasing enrollment. "What I'm

"I'm in favor of Drew getting the best for its money and I think right now there's a lot of waste and inefficiency in the University," said Foster.

looking at is bringing in more revenue by the Development Office," said Duffy. Increasing Drew's endowment and adding more student input into the admissions department are two ways Duffy thinks the budget problem can be solved.

Concerning athletic field problems, Foster was confident about his ideas. "I think that the fields should be the

number one project for development and I would push strongly for that because I feel that it's extremely important." Baldwin Gym is also quite out of date, but the fields are the most pressing problem, said Foster. New fields would not only benefit the present student body but also become an asset for admissions recruiting.

Duffy's position on this issue is quite similar. "I think the first step is the multi-use field, definitely. What that's going to do is alleviate some of the use of the varsity sports fields. Also, we'll open

"I agree with the student government that the figures that the Administration came in with were too high," said Duffy.

another field." According to Duffy, the indoor facilities would be next. This he feels would attract more students to Drew.

Both candidates also have similar ideas concerning the alcohol policy. Concerning the present one, Foster said "It's good, it has a few flaws in it

but overall, it's far superior to what we had last semester and hopefully in the future, we'll find new ways to make it even more relaxed." One of the problems Foster thinks he might see in the future is the closing of the Pub. He is definitely in favor of fighting to keep it alive.

Duffy's comment about the alcohol policy was that "with everything considered, I think the committee that formed the policy did a good job." He would also like to see some relaxation in the policy that will benefit the Drew Community as a whole.

Racial awareness has become an important issue on campus recently. Foster said "I feel that one of our problems right now is a lack of understanding." Foster has been one of the leading voices questioning the South African holdings of the University. "I am in favor of foreclosing on those investments." Foster says the goal would be "to see us work together more in finding ways to get out our concerns and our mutual frustrations and to work together and to resolve our problems."

On this issue, Duffy said "You really

Continued on page 2



Steve Foster and Amy Rosta, hoping for victory on Wednesday.

Dick Gregory: Noted Activist Speaks at Drew

by Mary Ellen Porcelli

SPeAKING to an audience in Great Hall on Monday, March 18, human rights activist and author Dick Gregory made a general appeal: be informed and let your opinions be heard.

Gregory discussed a wide variety of political and social issues that concern the general American public. Although he raised many subjects, ranging from organized crime to nutrition, Gregory was most outspoken about certain government agencies, drug and alco-

hol abuse, and prejudice. Regarding the state of American society, he commented on the system's "passionate disregard for human life." He focused on the rampant abuse of drugs and alcohol, especially in children and teens, the frequency of violent crime, and the existence of "vicious" racism and sexism. Commenting on racism, Gregory's strongest point was his belief in the need for restored hope within the black community.

Among the subjects of particular

interest to the Drew community, Gregory discussed the University's investments in South Africa, President Reagan's proposed budget cuts in education, along with racism and sexism. Gregory advised students to seriously think about sexism and racism and consider its consequences. On these and other issues, he appealed for direct action, maintaining that "you've got a big job to do," yet affirming "you can make a difference."

In a press conference following the

lecture, Gregory noted his particular interest in college students, stating that ninety per cent of his lectures take place on college campuses. He also stated the most disappointing aspect of college students is the amount of drugs and alcohol they use. When questioned about campus apathy, Gregory insisted that "it's always been there." However, he positively pointed out that today's college students are "easier to reach than they were fifteen

Continued on page 2

News Briefs

Media Distortion in Central America

Harry Mattison, *Time* magazine photographer who won the Robert Capa Gold Medal for war photography in 1982, will show his photographs and speak on Sunday, March 24, at 7:30 p.m. in Learning Center 28. He will discuss ways the U.S. media distorts our understanding of the realities of Central America.

Mattison has spent twelve years working as a documentary photographer in Central and Latin America.

Marvin M. Gaye Speech Contest

The Theatre Arts and Speech departments are currently organizing the Annual Marvin M. Gaye Speech Contest. Anyone interested may attend an organizational meeting on April 3. The contest will begin the second week in April; finals will be held on April 17 in Great Hall. Judging the contest will be

He was one of the only foreigners in Esteli, Nicaragua, when it was bombed by Somoza's forces in 1979. Though the country was full of foreign journalists, the U.S. press said nothing about the bombing and the numerous deaths.

He is co-author with Susan Meiselas of *El Salvador: Work of Thirty Photographers*, with text by his wife, the award-winning poet Carolyn Forché.

various lawyers and business people from the Morristown area. Speech topics may be chosen from a wide range, but topics important to the state or the nation are more desirable. Cash prizes of \$150, \$100, and \$75 will be awarded to the top three speakers. For further information, contact Joe Stampe, CM Box 1625.

Oxford Program

Paul Saville, a representative for the St. Clare's Hall program at Oxford, England will hold a meeting on Monday, April 1, from 11 a.m. to 1 p.m. in rooms 210-213 of the Commons. All interested students are invited to attend.

Jewish Holiday Preparation

The Jewish Community Center of Central New Jersey will hold two workshops concerning preparation for the Passover Holiday. The first workshop will be held on March 27 from 8 p.m. to 10 p.m. at the Martine Avenue Jewish Community Center. The second will be held March 31 from 12:15 p.m. to 1:30 p.m. at the green Lane Jewish Community Center. For directions to Martine Avenue, call (201) 889-880; for directions to Green Lane, call (201) 289-8112.

RESEARCH
Send \$2 for catalog of over 10,000 topics to assist your research efforts. For info, call toll-free 1-800-421-5745. In Illinois call 312-922-0300. Authors' Research, Inc. 800 N. 407 S. Dearborn, Chicago, IL 60605.

EUROPE ON SALE!

\$459 CHICAGO	\$599 ORLANDO
\$449 DETROIT	\$399 NEW YORK
	\$419 BALTIMORE/WASHINGTON

AND ICELANDAIR INCLUDES ALL THESE EXTRAS:
☐ Free wine with dinner, cognac after — in flight. ☐ Free deluxe roundtrip motorcoach between Luxembourg and select cities in Germany, Belgium and Holland. ☐ Reduced train fares to Switzerland and France. ☐ Super Saver Kemwel car rentals at \$59 per week in Luxembourg.

WE'RE THE ONLY WAY TO FLY TO THE BREATHTAKING BEAUTY OF ICELAND.
 From a 24-hour stopover to a grand tour of two weeks or more, we have the perfect package for a visit to Iceland. Europe's most beautifully kept secret. All fares subject to change and \$3.00 international departure tax. All fares valid 4/1/85-8/31/85. For information, restrictions and reservations for all of Icelandair's low fares, call Icelandair toll-free at 1-800-223-5500. In New York City 757-8585.

ICELANDAIR
 NOW MORE THAN EVER YOUR BEST VALUE TO EUROPE

Noted Activist

Continued from page 1

years ago," and are now more active and concerned about racism, sexism, and human rights. Regarding the particular problems of women and minorities, he reaffirmed that these people have to "push for themselves" and should not expect others to always act on their behalf.



Lecturer, author, comedian, and activist Dick Gregory speaking in Great Hall last Monday night.

Gregory possesses a diverse list of involvements and accomplishments. A former comedian, he has also served as a civil rights and political activist, a recording artist, an actor, an author and a philosopher. His interest and knowledge in nutrition induced him to develop and patent an all-natural weight loss formula. He has written books on numerous subjects, including American history, children's Bible stories, nutrition and politics. One work, *Code Name Zorro*, for which he collaborated with author Mark Lane, received particular attention for its theme of the assassination of Martin Luther King Jr. was the result of an FBI and CIA conspiracy.

Gregory's lecture was received favorably by the audience in terms of both delivery and content. Junior Steve Foster stated that he found the lecture "timely, witty, and funny," and was most impressed by Gregory's sense of humor along with "the way he combined political comment with satire." Senior Anna-Beth Winograd thought the lecture "excellent" because "it touched a lot of issues people were scared to think about (yet) can still relate to. It hit home — he made you think. I'm still thinking about it."

Presidential Elections

Continued from page 1

don't understand the concerns of others, I mean how it's not enough to say 'I'm not a practicing racist, so I'm doing my part,' but it's really not true. Just by not doing anything, you're doing something. You're letting racism continue." Duffy has suggested the possibility of appointing an Affirmative Action officer for the S.G.A.

On the subject of housing, both candidates feel strongly about the attempted takeover of one of the Suites by the Housing Department for use as Graduate and Theological student housing. Foster said "I feel that the Administration's defense of raising the cost of singles is indefensible." If necessary, instead of the takeover of a Suite, Foster suggested that bedspace for Graduate students be taken from one of the less desirable undergraduate dorms. Duffy feels that it is the fault of the Administration that a radical move like a takeover is attempted. "You've got to start looking at it early, you have to realize what your options and alternatives are and start to plan a strategy."

Duffy is also in favor of housing extra graduate students in undergraduate dorms if needed.

When asked what was the goal of his Administration if elected, Foster replied, "We would like to stand up and be a protector and defender of student's rights, insure that the integrity of the S.G.A. is upheld, and to make sure that the student government is an open, responsible organ of student opinion in voicing student needs on campus. As such, openness, integrity, and honesty." Duffy's goal is threefold. First, he wants to protect the students from large tuition increases and continue the availability of financial aid. Secondly, he hopes to continue the good relations between the S.G.A. and the Administration, saying a "relationship based on mutual respect is vital to the Student Government and the student body." Lastly, Duffy wants to open up the S.G.A. and give the Drew Community more access to the decisions made in the Senate and other arms of the S.G.A.

Ladies Fashion
 Come Join Our Team!
 Loehman's

We are looking for students to work in sales, stocks and cashiers. Hours flexible. Full time and part time hours, day and evening, as well as the weekends. We offer a liberal benefit program. Apply in person, Monday-Friday 10 a.m.-5 p.m. 176 Columbia Turnpike, Florham Park, NJ

Measles Plaguing College Campuses

by Justine Newsome

OUTBREAKS of measles (rubeola) have been reported on a number of college campuses in Boston, Florida, Illinois, Massachusetts, Michigan, Ohio, and Texas. According to JoAnne Long, head nurse at the Student Health Service, it is estimated that up to 20% of college students are susceptible to this disease and that "the whole nation is on alert."

The symptoms of this preventable disease are, in the beginning, similar to a cold or flu: sore throat, a cough and slight fever, according to Nurse Long. These, she added, are followed by a red, dotted rash and aching. Although there are no reported cases at Drew yet, it is important for students to be positive about their immunity due to the possible long-term effects of the disease which can include encephalitis, which affects the brain, and, in some cases, death.

Nurse Long said that the Student Health policy on campus follows the guidelines provided by the Center for Disease Control (CDC). Therefore, "right now the whole focus is aimed at prevention," she said, adding that this year all entering freshmen were required to provide evidence of prevention of German measles (rubella) and measles.

To prevent the spread of measles, students should check, with their parents or their family physician as to whether they are immune. Long said,

adding that a student who has already had measles is naturally immune.

According to Epidemiologist John Frank of the CDC, people born between 1957 and 1967 are especially vulnerable. At this time the incidence of measles was dropping; therefore, most children were not exposed to the disease and did not acquire natural immunity. Some were never vaccinated, and for those who were, the vaccine was not always effective. Nurse Long emphasized that, in order to provide adequate immunity, the measles vaccine must have been given on or after the child's first birthday with a "live" virus.

Long spoke of an "excellent response" to the alert from Drew students, but called for any student who has not yet checked his or her immunity to do so as soon as possible. The vaccine can be administered free of charge during physician hours at the Student Health Service.

If anyone has been exposed to measles, particularly during spring break, he or she should contact the infirmary immediately, said Long, who explained that vaccination within twenty-four hours of exposure may prevent the disease of, even after a longer period of time, may reduce its severity.

Nurse Long also said that she and the Health Service staff are always available to answer any queries concerning the measles outbreak.

Is There a Drug Problem at Drew? Administrators Say No

This is the first of a two-part series dealing with the drug situation on Drew campus. The second part will appear in two weeks and will discuss student perspective on this issue.

by Robin Wernik

WHILE the term "drug culture" was for years synonymous with college life and drugs were thought to be prevalent among students, a drug problem does not exist at Drew, according to a recent discussion with several administrators.

Manny Ayers, Chief of Drew Security, explained that he sees "no great problem" concerning drugs on campus. In fact, he has observed that the drug situation is "much better...the stu-

dents are more sophisticated and dedicated to their education."

Most administrators agreed that drug use on college campuses has seen a reversal from the heavy use of the sixties and seventies to relatively little use today. Ayers added that this reversal has led to heavier alcohol consumption, declaring that there is "more involvement with alcohol...it seems to be winning over."

Dean of Students Jane Newman also commented on the increased use of alcohol on campus, saying that "we have students who have sought help for drugs such as alcohol. She added that "when a student seeks help, it means he really wants it...with this



we've had some success."

When asked whether Drew does, in fact, have a drug problem, Newman answered that "I don't see one." She added, however, that "if a student does have a problem my first concern is to help the student or refer them to the counseling center."

George Jennings, Director of Affirmative Action, also said that some individuals clearly have alcohol problems. Nevertheless, he added, "beyond alcohol use" he hasn't seen anyone with a drug problem. The reason, he explained, is that "a lot of people are afraid to reveal serious problems." He further stated that the counseling center has a "confidentiality policy" and will do the best it can to "alleviate the problem for in community as well as the person."

According to JoAnne Long, head nurse at the infirmary, it is "not common" for students with drug problems to seek help at the infirmary. She said that "the last place they would come is here...for fear that they would get into trouble." She added that the infirmary does not have a special program for drug abusers, however, if help were requested, she said, Fair Oaks and the Center for Addictive Illnesses are recommended.

The administration emphasized that the law applying to the state of New Jersey applies to the Drew community as well. Newman stressed that any violations of that law may "subject a student to disciplinary procedures." Ayers added that there are "several experienced people working (on campus) that know the drug scene" and that it is standard practice for the local law enforcement agency to send in under-

Snapshots

Adam Himber's

Late Night Long Distance, 1982



The Acorn

A weekly newspaper published as a service for the Drew University community by the students of the College of Liberal Arts.

Drew Investments in South Africa: Let's Vote On It

A LONG with a long list of candidates for a variety of positions to vote for, students will find something a little bit different when they go to vote in the S.G.A. elections on Wednesday: a referendum on the Drew Trustee's investments in companies that invest in South Africa. While this issue is not nearly so much on the minds of students as the elections, it is an issue we should all stop and think about very carefully.

Basically the referendum, which was sponsored by the Committee on Investment Responsibility in conjunction with Hyera, Ariel, DEAL, the Peacemakers, Amnesty International, and Women's Concerns, deals with the fact that Drew's trustees hold investments in almost 30 companies which sell products to or loan large amounts of money to the racist government of South Africa. Among the companies on this list are Coca-Cola Co., IBM, Citicorp, General Motors Corp., and many others. The exact wording of the referendum is: "Should the Board of Trustees of Drew University divest of University holdings in corporations conducting business in South Africa or in firms extending loans to the South African government?"

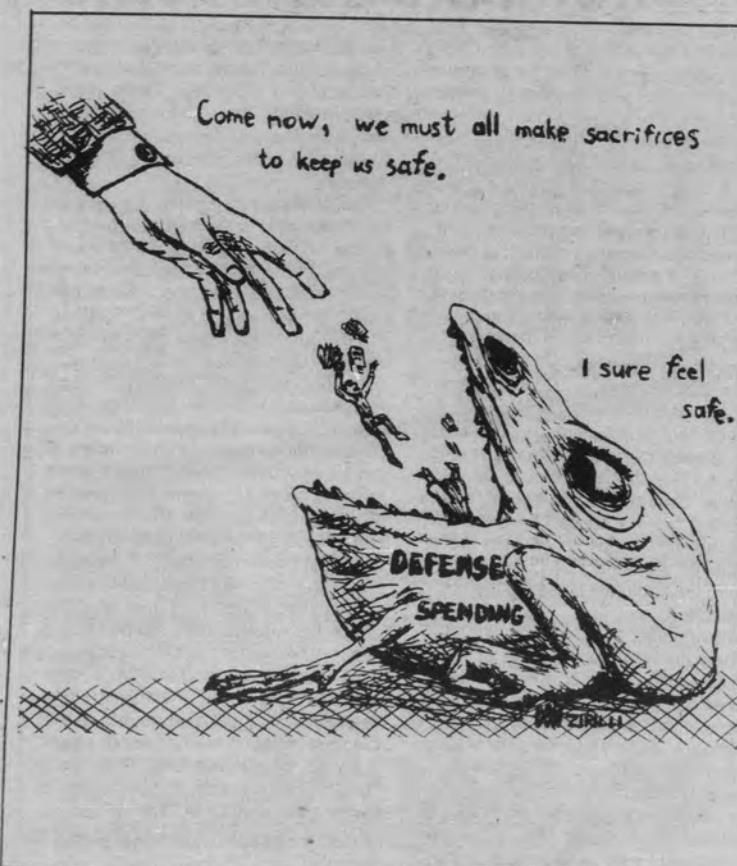
None of the corporations listed above have agreed to the fundamental humanitarian principles issued by 1984 Nobel Peace Prize winner Bishop Tutu for businesses with investments in South Africa. These principles are:

1. Ensure that all black workers are permitted to live with their families near the place of work.
2. Recognize representative black unions whether or not they are registered with the government.
3. Freely hire black labor without regard to the South African laws restricting the movement of Africans within the country.
4. Enforce fair labor practices and invest "massively" in black education and training.

To be sure, this referendum will not end South Africa's firmly entrenched racist policies, nor will it necessarily even end the Trustee's investment in these companies. However, if Drew students overwhelmingly speak out against investment in such companies through this referendum, it will give the Committee of Investment Responsibility a powerful persuasive tool against Trustee investment in such companies. The South African government relies heavily on such foreign investment, and thus regulation of that investment can be a powerful force for change. Similar referendums were passed at Brown University and Harvard in 1984, and were successful in limiting such investment by those schools.

Furthermore, regardless of the practical effectiveness of the referendum, as students we have a moral obligation to do whatever possible to end investment in the horribly repressive and racist government of South Africa. Therefore, we urge you to vote yes in the referendum. As Dick Gregory said in his speech on Monday night: "You can make a difference."

F.J.S.



Letters

An Obsession With Being Thin, Part 2

To the Editor:

A couple of weeks ago I wrote an article for the *Acorn* called "An Obsession With Being Thin." Due to space limitations in the *Acorn* I was not able to include a few important points in that article, particularly relating to bulimia. Given the seriousness of this illness and its prevalence on college campuses, (two different reports cite incidents of 13 percent and 19 percent), I feel it is important for me to emphasize that this illness has far greater ramifications than many people are aware of. It can lead to serious erosion of tooth enamel, mouth sores, problems with potassium levels that can effect muscles and the heart, and in extreme cases can be fatal.

Women who have this problem really feel out of control and basically cannot stop themselves. If you know someone who has this problem I strongly suggest that in a caring but firm way you strongly suggest they seek counseling. If you have this problem yourself, please feel free to stop by the Counseling Center to talk about it. Trained counselors can either help you here or refer you to resources in the community.

Also, one more point for people who are not bulimic or anorexic, but are still obsessed with being thin. In addition to learning to diet moderately, it is important to work on your self-esteem so that it is not dependent on how much you weigh. Also, try to work on not using food to nurture yourself or to calm yourself when you are stressed. Find other ways to deal with your feelings that are more constructive.

For more information on bulimia and anorexia, the American Anorexia Nervosa Association in Teaneck, New Jersey, (201) 836-1800 provides much information to interested people.

Marge Terrafranca

Cort Endorses Candidate

To the Editor:

I would like to take this opportunity to endorse the candidacy of Andy Mayers for Chairman of the Extra-Classroom Activities Board (E.C.A.B.). In my four years at Drew I have never seen a more qualified candidate. As chairman of the E.C.A.B. this year I have worked closely with Andy. He has demonstrated his insight and knowledge of the

workings of the various clubs and organizations on campus. This knowledge will prove invaluable to the extra classroom life at Drew next year. I urge everyone to vote for Andy Mayers on March 27th.

Sincerely,
Daniel Cort
Chairman of the E.C.A.B.

The Acorn

Judy Budd Editor	Greg Crawford Associate Ed.	
Kevin Ryan News Ed.	Frank Sullivan Opinion Ed.	Mike Pavlick Sports Ed.
Dave Rodgers Entertainment Ed.	Jim Brown Music Ed.	Peter Schnatz Photo Ed.
Mary Ellen Porcelli Fillers	Stacy Lane Copy Ed.	Niki Cook Layout Ed.
David Hayes Production Manager	Andy Mayers Business Manager	Aurora Hill Ad Manager
Richard Fisher Advisor	Bill Craven Advisor	

Photo Staff:

Mike Rosenhaus

Jessica Jaworowski

Anne Abrams

Printing Policy

Editorial Policy

The *Acorn* welcomes unsolicited letters to the editor which are relevant to issues of concern to Drew students. Letters should be less than 200 words, typed double spaced, and sent to The *Acorn* via campus mail. Deadline for the same week publication is Tuesday by 4:00 p.m. All letters must be signed and addressed. Names will be withheld upon request. The *Acorn* reserves the right to edit for length and propriety.

News Releases

Unsolicited articles dealing with club, group, or organizational activities will be treated as news releases. The deadline for these releases is Friday for the publication on the following week. Releases should be typed double spaced and should be sent to The *Acorn* via campus mail. The *Acorn* reserves the right to edit or rewrite all news releases.

Printing

Final printing decisions will be made by the editors of The *Acorn*. These decisions are made with regard to space available after assigned staff stories and paid advertisements have been placed in the paper. The editors will then give consideration to the most timely and relevant releases and letters to the editors.

Campus Ads

Non-profit campus organization ads of 1-16 page or less are free if submitted by noon Monday for the same week publication. After this time the full outside rate will be charged. Ads larger than 1-16 of a page are 1-2 the outside rate if submitted by noon Monday. Campus ads run consecutively will receive lower priority than those not yet run. Paid ads receive priority over free ads.

Letters

Foster/Rosta Ticket Endorsed By Students

To the Drew Community:

As students at Drew we feel it is our obligation to address the issue of maintaining strong leadership within the student body, particularly the Student Government Association.

As the election date is approaching, we have looked closely at the candidates and selected a President and Vice-President whom we feel will provide the necessary leadership. Stephen Foster and Amy Rosta have involved themselves in the social, academic, and extra-curricular aspects of student life within the Drew community. In working with them over the past years we have seen a strong commitment to student rights and a strength of principle in confronting the administration and staff when it appears the students have been wronged.

Foster facilitated the restructuring of the judicial process which now allows for students to hold 2 and possibly 3 of the 5 committee seats. Foster spearheaded an effort to adjust the Tuesday/Thursday class schedule to allow more time for lunch. This plan was overwhelmingly approved by the faculty.

Rosta has worked hard on the executive board of WMNJ, argued effectively in the student government senate, and been an outspoken advocate of student rights on the Academic Standing Committee in addition to coordinating the most successful Election Night Watch 'ever'.

Since their freshman years both Stephen and Amy have dedicated three years to improving student life. We believe it is in the best interest of every student to vote for the Foster/Rosta ticket in the upcoming election. Let them prove to you what they have proven to us.

Adam Glazer University Senator	SGA President	Lisa Paolini	Admissions Steering Comm.
Linda Blaney Pub Board Chair	SGA Vice-President	John Cantone	
Kate Gavigan U.C. Board Chair	Student Comproller	Jodi Ide	
Lori H. Silverstein Senior Gift Society	Women's Club	Anthony Marucci	
Carolyn Solitare Chairman, Student Concerns Comm.	Senior Class Senator	Chris Pischella	Michael Shavel Technical Director, WMNJ
Anna-Beth Winograd President, Drew Rugby	Amnesty Int'l	David Hayes	Production Mang., Acorn
Trip Mestanas Cathy Zyszynski	French Club	Bonnie Schaffner	Adm. Policy Comm.
Tanya Amrein	Housing Assistant	Laure Murphy	Alumni Board
Twila Driggins	Tolley Dorm Senator	Diana Jeffrey	Stu. Concerns Comm.
Stan Hooper	R.A.	Carolyn Torrey	R.A.
		Jeffrey Lunin	Capt. Rugby Club
		Mary Burke	Baldwin Dorm Senator
		Debra Azarian	Pub Board
		Bill Bolin	Ex. Secretary, SGA
		Stephen Groat	Senior Class Senator
			Head R.A., U.P.P.C.

Student Announces Candidacy For Social Committee Chair

To the Editor:

I'd like to take this opportunity to announce my candidacy for the position of Social Committee Chairperson. My experience on the Committee includes two semesters as a member and service as the current Executive Secretary. Through my work with the current chairperson, Kathy Odorow, I have learned how much hard work, organization, and dedication it takes to be chairperson; I am willing to put forth all I have to do the job.

My attitude of dedication and commitment is visible through my participation in many clubs and activities throughout my two years at Drew. These include the following positions:

- Student Concerns Committee (Secretary)
- Junior Class Senator
- Resident Assistant
- Living Council (treasurer, co-president)

- Steering Committee
- Tolley Dorm Senator
- Senior Week Committee
- U.C. Desk Attendant

One of my ideas for next year is to get more student input—not just from the Social Committee itself, but also from each of you. I plan to do this by talking to you and sending out questionnaires and evaluation forms for past events. Another idea is to have more theme parties. One suggestion is a "Rocky Horror Picture Show" party. If elected, I will be asking for your criticisms and suggestions.

I am enthusiastic about organizing events and reaching the students who want entertainment. I am prepared to meet these needs by providing a varied and exciting social life. Thank you for your consideration.

Sincerely,
Brenda Rhodes

Letters

Students Back Scarola

To the Editor:

We the undersigned would like to recognize and support Michael Scarola's candidacy for Social Committee Chairperson. We feel that Michael Scarola has the leadership abilities and reliable qualities to make an efficient chairperson for the '85-'86 Social Committee.

It is our belief that Michael has proven these abilities and qualities as a member of the Orientation Committee '83-'84, '84-'85 as Holloway Living Council President '83-'84, as a member of the '84 Senate and as a active member of the Social Committee.

Although Michael has been involved in a variety of Drew activities and clubs, we commend his decision to dedicate his senior year to the Social Committee only. There is one exception, the Orientation Committee which will require only a few days of his time in the Fall of '85.

We applaud Michael's willingness to run from abroad. We see this as just another factor of his dedication to the Drew Community, and hope that you, the students of Drew do also.

Thank you,	Signed
Charles Spinozza	Soccer Team
Diane Halberg	London Semester
Karen Priest	Orientation Committee
Elise Kravet	Social Committee
Nancy Kasin	Orientation Committee
Mary Ellen Porcelli	Brussels Semester
Leola Ross	Social Committee
Jennifer White	Orientation Committee
William Pezzuti	RA (Brown)
Frank Covelli	Ski Club
Andrew Well	School Car Mechanic
Stan Hooper	Pres. Riker Living Council
	RA, Art Academic Asst.
	Rugby

Rhodes Endorsed by Students

To the Editor:

With only two weeks until the election for Social Committee Chairperson, we would like to take this opportunity to endorse Brenda Rhodes for this position. Brenda is a strong candidate, demonstrating leadership qualities. This is evident by the number of activities and committees she has served on, including Social Committee Executive Secretary, Tolley RA, SGA Dorm and Class Senator, and Student Concerns. We feel Brenda's commitment and concern for Drew and its students speaks for itself. This is why we are supporting Brenda Rhodes and we hope you will as well on Wednesday, March 27.

Laura Pill	Social Committee Member	P.J. Cimino	Haselton Living Council
Mary Burke	UC Desk Attendant	Ricky Alembik	Resident Assistant, 85-86
Lisa Spitz	Baldwin Dorm Senator	Dan Gordon	Tolley Dorm Senator
Betsy Clemens	Sophomore Rep. Pub Board	Stephen Obie	Acorn Staff
Daniel Cort	University Senator	Kristin Davis	UC Desk Attendant
Forrest Shue	Acorn editor, 1982-85	Liza Matetsky	Secretary of Young Democrats
Jodi Kramer	Resident Assistant	Stan Hooper	Residential life Comm.
Jocelyn Hammaker	Chairman ECAB	Chris Gorman	Tolley Living Council
Paul Oberman	Social Committee Member	Lynn Mertz	Co-Pres. Tolley Living Council
Vannie Weisbecker	Exec. Board	Russell Stephan	RA Riker
Valerie Weisbecker	Social Comm. Member	Katherine Savage	Academic Asst. Art Dept.
	Comm. Council President	Bill Both	Commuter Senator
		Randi Phillips	Commuter Senator
		Glenn Kurtz	Basketball Capt.
		Tobe Arons	Resident Assistant
			UC Board
			Director of Business & Membership of DUDS
			Tolley Dorm Sen.
			Theatre Sound Tech.
			DUDS Member
			Resident Assistant
			Brown Dorm Senator
			Co-Chair, College Republicans
			Senior Class Senator
			University Senator
			Resident Assistant 85-86
			Resident Assistant
			Social Committee Member
			Financial Planning Comm., SGA
			Foster Dorm Sen.
			UC Desk Attendant

Commentary

Vacationing With The Squirrels

by Ken Herron

If one more person, just one more deeply-tanned person tells me about their wonderful trip to the sunny Caribbean, I will bite them! As for myself, I did not go anywhere warm or tropical or exotic over Spring Break (not even Canada or the Catskills). Unless, of course, New Jersey is your idea of Club Med, and if it is I suggest you see the school shrink (no, not the dorm dryers). Some vacation! I'm not one to complain (contrary to popular belief), but after eight days off from Drew I need a vacation more than ever. Okay, I admit, I did have some fun over Spring break. I was able to get into New York one day (and of course we all know how relaxing New York is). I was harassed, accosted, and molested, and that was while I was still in the Port Authority. New York City is indeed a fun place. Where else can you go into a store where the cheapest article of clothing costs as much as a year's tuition at Drew, and find T-shirts with such philosophical sayings as "Sticks and Stones may Break my Bones, but Whips and Chains Excite Me?"

The general area around the Port Authority itself deserves special mention. For those of you who have never been to this charming piece of Americana, it is well worth the trip. I learned more about human sexuality in ten

minutes of walking (running) down 42nd Street than I ever will in a semester of Zoology. You would not believe the range of inflatable objects available to the consumer in this charming region of New York City.

In addition to visiting New York, I hit the streets in search of a job for this coming summer. As you undoubtedly know, it is no easy task. How many of you remember your high school's address? Your last employer's name, phone number, and blood type? And then come such great questions as: "What did you like most/least about your last job?" No matter what you say, you're doomed. And when you're done filling out the application, they all say the same thing: "We'll contact you in a few weeks". Why don't I believe them?

Over break I had intended to catch up on all of my back reading, in order to be ahead of the game by the time classes resumed. Why is it that even though I read and studied for four days solid I'm still behind? (I think I've discovered one of Murphy's laws firsthand). Could it possibly be because I had three novels to read, one in a language other than English, and one with as many pages as Drew's stock portfolio?

Well, we're finally back (I've always been good at the obvious). I wonder if the squirrels missed us...

Letters

Student Announces Social Committee Candidacy From London

To the Editor:

I, Michael Scarola, would like to announce my candidacy for the position of Social Committee Chairperson.

In my three years here at Drew I have been involved in many aspects of community life. Presently, I am studying in London. In previous semesters I have been involved in a variety of organizations that I believe qualify me for the position of Social Committee Chairperson. As a member of the Social Committee I had the opportunity to see how the committee operates. Along with being a member of the Social Committee I have also served as a Senator, and have been a member of the Orientation Committee, Pub Board, Parents Weekend Committee, Junior-Senior

Semiformal Committee, and my living councils. Also, on my own time this past semester, I worked with another student to organize a non-alcoholic happy hour in the pub.

I believe that social life is a fundamental part of college life. If elected I look forward to working with the student body to create an enjoyable and fulfilling social life. Finally, I intend to work with other student organizations with the intention of creating a greater unity between these groups. I would greatly appreciate your support in the upcoming election.

Thank you,
Michael Scarola

Come to The Acorn Forum

Hear All Candidates' Views
Ask Questions
Get to Know the Candidates

Monday, March 25, 1985
UC 107 8-10 p.m.

Budget Slasher Strikes

by Terry Brunk

WELL, good ol' Ronnie "Economic Recovery" Reagan is at it again.

Our incomparable leader is in his fifth year of office and for the fifth time he's after our college educations. There are a lot of students who are a little upset about the national budget situation. But these people don't really understand the inside story: how Ronnie is opening up new educational and professional opportunities by transferring money from government education programs to the forgotten and underfunded Defense Department. I don't doubt that, once I've made everything clear, all good, loyal, patriotic, red white and blue American college students will support the President's policies.

Allow me to explain some of the basic principles behind Ronnie's kind and compassionate program:

- As you know, there is far too much waste in any and every social program. Education programs are no exception. These programs are bad for the economy because they consume money which could be invested in grassroots American industry. Just think of the 73 cents you saved on your Federal Income Tax last year: would you rather buy stock in General Dynamics with that or have the government rip it out of your hand and give it to a college senior who owns eight Cadillacs and an international fast food chain? Well, that's what happens to most of your tax money. Of course, Ronnie "Diamond Cufflinks" Reagan won't let the truly needy lose out: he's arranged for tax loopholes and other economic incentives as a safety net for

those who earn more than \$500,000 a year.

- You must remember that money taken from education programs is not really lost money. It's still available to college students: all you have to do is become a mercenary and join the armed forces. The college funds in the armed forces are growing even faster than Ronnie "College is for Communists" Reagan can take money away from the public programs. Just think: you can get money for college, great training for your professional career as a soldier of fortune, and earn a paycheck at the same time—and it won't cost you a dime!
- It's also very important that college students understand the ethical reasons for Ronnie "It's not my problem, I'm not in college" Reagan's budget cut. We live in an age of increasing political dangers which threaten the American way of life. There are subversives everywhere, some even in our own country, who go so far as to believe that countries have the right to determine the kind of government they want. You all know how many radicals there are in college: can the U.S. afford to pay for their education and not for national defense? We'll have to make sacrifices to protect the nation. The government simply cannot afford to buy \$600 toilet seats and \$7000 coffee pots if they don't cut back somewhere.
- I'm sure all of us Drewites can now appreciate the difficult decisions our President has been faced with. Further, we can all understand why we shouldn't be allowed to go to college, and why we should thank the President for the opportunities he has made available for us.

Mayers to Run for ECAB

To the Editor:

At this time I would like to announce my candidacy for the position of E.C.A.B. (Extra Classroom Activities Board) chairperson. During the past three years I have been deeply involved in the activities at Drew University, and the experience that I have gained has given me insight into the functioning of clubs as well as the other operations of the board.

My experience within clubs has ranged from an executive board member of the photography club (my Sophomore year) to three years as serving on the executive board of the Acorn. My Freshman year I was the

photo editor and the last two years I have served as the business manager. Presently, I am the vice-chairperson of E.C.A.B. This responsibility has provided me the best experience possible for the position of E.C.A.B. chairperson. I have played a major role in the operations of this year's board. I feel that a combination of being involved in clubs and serving as the vice-chairperson on the current E.C.A.B. makes me the best candidate for E.C.A.B. chairperson.

I would appreciate your support on March 27th.

Thank You,
Andy Mayers

Ramos Announces Candidacy For ECAB

To the Editor:

My name is Carlos J. Ramos, and I am a Junior and the current chairman of Ariel, the Hispanic Cultural Society on campus. I would like to announce my candidacy for Chairman of the Extra Classroom Activities Board (E.C.A.B.). In the last two years I have served as treasurer of Hyera, the black student Union, and of Ariel. Being in these positions, I have submitted budgets to the E.C.A.B. from both clubs and have learned the appropriation procedures that clubs must undergo.

As Chairman of Ariel I have encouraged a strong union of the small clubs on campus, such as Hyera, Women's Concerns, DEAL, and the Peacemakers, through awareness of each other's activities and economic aid from each other where possible. I have also tried to cooperate with the Social Commit-

tee and student government by announcing our events and suggesting areas where their help in any way would be appreciated. If elected, I would encourage this trend among all other clubs. Since our student activities fee has increased from \$110 to \$120 and we do not expect clubs to have another ten percent cut, we must also remember other clubs that are on probationary status and that would like to be budgeted. I mention this because to me it is very important that Drew's students get involved in the activities and clubs which they are paying for.

In conclusion, I urge you on March 27 to remember to vote for Carlos Ramos and an increased awareness of the role of student activities on campus.

Thank you,
Carlos J. Ramos

Vote!

Student Government Elections are this Wednesday. The following seats are on the ballot:

President and Vice President
(Choose one ticket)

Duffy/Velez
Foster/Rosta

ECAB
(Vote for two)

John Jandrasits
Carlos Ramos
Andy Mayers

Social Committee Chair
(Vote for one)

Brenda Rhodes
Mike Scarola

Student Concerns
(Vote for three)

Liza Matetsky
Randi Richardson

The polls will be open Wednesday, March 27th, 9am to 6pm in the Main Lobby of the UC.

Seniors can vote

Vote!

ENTERTAINMENT

This Weekend's Flick: *Purple Rain*

by Simon Jon Nadel

CAN a struggling young musician overcome his personal and family problems and someday win a Grammy? Obviously he can, since *Purple Rain* is the autobiographical story of pop singer Prince's early life.

Prince stars as the Kid, the leader of a band which plays regularly in a Minneapolis nightclub. He has aspirations of breaking out of this routine, but is held back by dilemmas, the responsibility for which is mainly attributed to

his parents. It seems that his father blames him (the Kid's) mother because he never made it big as a jazz musician. For this he beats her regularly, which does not do much good for the Kid's mental stability.

After one of his gigs, the Kid meets voluptuous Apollonia. She is looking to break into the music business (although her wardrobe would suggest another type of business). The Kid likes her, but can't seem to find the emotions to show it. Enter Morris Day, the comic

relief of the movie. He is in a band that plays at the same nightclub, and begins to fancy Apollonia. So the plot of *Purple Rain* revolves around whether the Kid will (A) become a successful, and (B) get the girl.

The acting in *Purple Rain* is bad. The cast either never had any previous experience, or were graduates of the Monotone School of Dialogue Delivery. In one desperate attempt at humor, Morris Day and his partner do a modernized *Who's on First*.

On stage, Prince shamelessly imitates Jimi Hendrix, Mick Jagger, and Michael Jackson, while clearly lacking their talents. His lyrics are unimaginative, his numbers filled with gimmicks to disguise his musical lackings. The performance of *Let's Go Crazy* is the high point of the movie. Unfortunately, it occurs at the very beginning.

Maybe my opening question should have been: Can a talented singer reap big bucks from a bad movie?

TODAY'S

ACROSS

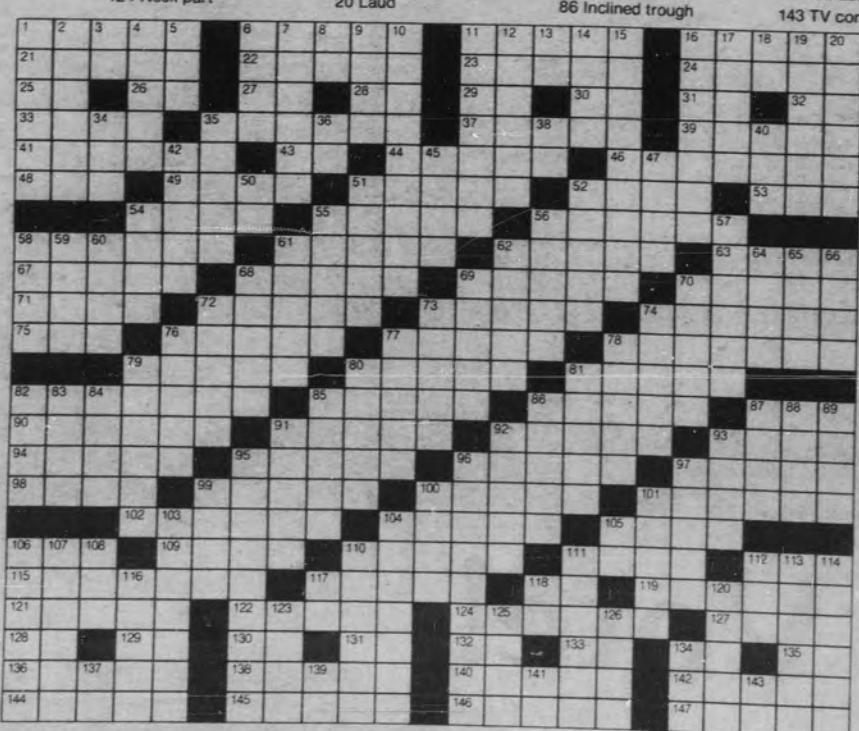
- 1 Hide
- 6 Complainer
- 11 Sweetener
- 16 Walk heavily
- 21 Sample
- 22 External
- 23 Wear away
- 24 Extreme hardship
- 25 Approve
- 26 Oral pause
- 27 Verb form
- 28 Concerning
- 29 Jewish month
- 30 Not: pref.
- 31 Hindu mantra
- 32 French article
- 33 Bring to maturity
- 35 Hurled pebbles at
- 37 Stickum
- 39 Biblical mountain
- 41 Of races
- 43 Right-hand page
- 44 Golf clubs
- 46 Conquers
- 48 French coin
- 49 Knocks sharply
- 51 Frighten
- 52 French priest
- 53 Simple sugar
- 54 Glove part
- 55 Small: fr.
- 56 Handles
- 58 Tell
- 61 Rescued
- 62 Ballet practice rail
- 63 Very: fr.
- 67 Harangue
- 68 Changed position
- 69 Drills (a hole)
- 70 Plain English
- 71 Wrinkle

DOWN

- 72 Italian river
- 73 Summoned publicly
- 74 Sentence part
- 75 Conducted
- 76 Office records
- 77 Without
- 78 Sang repetitively
- 79 Animal trainer
- 80 Peels
- 81 Not sharp
- 82 Beginner
- 83 Seeks game
- 86 Stop
- 87 Encountered
- 90 Debated
- 91 Wild West show
- 92 — out: bring to an end
- 93 Stubborn animal
- 94 Horse fathers
- 95 More adorable
- 96 Becomes rancid
- 97 Deputized band
- 98 Health resorts
- 99 Difficult question
- 100 Disorderly fights
- 101 Smashes
- 102 Go
- 104 Move sideways
- 105 Essential
- 106 Indian mulberry
- 109 High cards
- 110 Gowns
- 111 Mongrels
- 112 Palm fiber
- 115 Rent
- 117 Is optimistic
- 118 Cry of pain
- 119 Composed
- 121 Striped animal
- 122 Arise: 2 wds.
- 124 Neck part

PUZZLE

- 127 Bamboo-like grass
- 128 Bone: Lat.
- 129 Continent: abbr.
- 130 Nero's four
- 131 Thus
- 132 Digraph
- 133 Causing: suff.
- 134 Three-toed sloth
- 135 Silver symbol
- 136 Ancient stringed instrument
- 138 Pilot's OK
- 140 Cost
- 142 Sublet
- 144 Chalk board
- 145 Slightest
- 146 Jewish ceremony
- 147 Poisonous snake
- 1 Puts aside
- 2 Develop a liking for: 2 wds.
- 3 While
- 4 Strict
- 5 Pronoun
- 6 Mountain climber
- 7 Uncertain reports
- 8 Guido's note
- 9 Simple
- 10 Prognosticated
- 11 Waterfront city
- 12 Refined
- 13 Travel
- 14 Mine entrance
- 15 Recalls
- 16 Intersected
- 17 Restrict
- 18 Biblical king
- 19 Grinding teeth
- 20 Laud



© 1985 United Feature Syndicate

Chorale Tours During Break

by Richard Carson

THE Drew University Chorale under the direction of Lester Berenbroick spent its Spring Break touring parts of the United States and Canada. While many students from Drew sacked out at home all week, the Chorale tried to sack out on a bus where some rides between towns lasted 5 hours. They performed in seven towns all together—the same program for each performance. The tour included stops in western Pennsylvania, upstate New York and Toronto, Canada.

The Chorale program ran the gamut in musical composition. Perhaps the most famous piece was Gabriel Faure's Requiem, a Latin composition celebrating Christ's resurrection. The program featured many light pieces as well. One from a comic opera by Offenbach showed the gossip resulting from a misconstrued rumor about a man's love life.

The Chorale's most difficult engagement was in Toronto, where the church they performed in was acoustically "dead." In order to compensate, Berenbroick had the Chorale sing softly and more professionally. It was a rough performance and parched the throats of many.

The Chorale will be performing in its last concert under Lester Berenbroick's direction, in Great Hall on Sunday, March 24, at 1:30 p.m.

Free access

...to information from the Federal government is available to you at more than 1,380 Depository Libraries across the country. You can visit any of these libraries and use the Depository collection free of charge. To find the Federal Depository in your area, contact your local library or write to the Federal Depository Library Program, Office of the Public Printer, Washington, DC 20401.



Federal Depository Library Program

ENTERTAINMENT

All Night Film Fest

by David Rodgers

THERE'S not much to say about these movies that you haven't heard already. In case you've forgotten, or (God forbid!) have never seen any of these movies prior to tonight's presentation, here's a brief capsule review of each one.

Arthur
Dudley Moore, as he does in practically all of his pictures, gets drunk in this one also. As a coddled millionaire in love with waitress Liza Minelli (very good in another of her too infrequent film appearances), but who is being forced to marry rich Jill Eikenberry, Moore is drunk quite a lot. Steve Gordon's completely likeable comedy focuses on Arthur's unhappy romantic predicament, and the efforts of his very-proper chauffeur, played beautifully by Sir John Gielgud, to save him from his self-destructive tendencies. If you can stay awake, and don't mind a little fluff, Arthur is worth catching.

Animal House
John Landis' phenomenally popular depiction of life at Faber college in the early 1960's made John Belushi a movie star, but it is the great ensemble work of the young cast, including Tim Matheson and Thomas Hulce, which lends this comedy its sophisticated edge. *Animal House* rebounds drunkenly between cheap laughs and high wit, but next to its many imitators (see *Caddyshack*, below), the film is in a class by itself.

Caddyshack
This film is among *Animal House*'s many imitators (see above). It's about shenanigans on and off of a golf course, involving Rodney Dangerfield, Chevy Chase, Ted Knight, Bill Murray and a

hand-puppet gopher. Everyone except me seems to have a soft spot for *Caddyshack*, so if you haven't seen it, give it a shot. Murray's always good for a few laughs. If anyone is interested, the film was directed by Harold Ramis, who appeared in both *Stripes* and *Ghostbusters* with Murray.

Rebel Without a Cause
This is the original one about troubled teen-agers in the 1950's, and James Dean created in this movie the archetypal image of the troubled teen. Although some elements of Nicholas Ray's film don't relate well to the suburban life of thirty years later, the performances of Dean, Sal Mineo as his insecure friend, Natalie Wood as his girlfriend, and Jim Backus as the boy's tender-hearted father, are all excellent. *Rebel Without a Cause* remains an important motion picture because it represents a great stride toward the more realistic cinematic treatment of youth and alienation.

Airplane!
More good fluff. Jim Abrahams, and Jerry and David Zucker put together this hilarious parody of the *Airport* movies and *1 The High and the Mighty*. Although it bears a resemblance to Mel Brooks' genre spoofs (such as *Young Frankenstein* and *High Anxiety!*), *Airplane!* has a more deadly accurate awareness of the clichés and the comic possibilities that they provide. Wait to wait jokes (some of which are executed so rapidly you can only catch them with repeated viewings) make this one of the best movies ever created for sheer laughs. To paraphrase an overused movie-critic exhortation, if you see only one film tonight, see *Airplane!*.

Master the art of teaching in just 15 months.

The Master of Arts in Teaching (MAT) program at FDU's Teaneck-Hackensack Campus qualifies bachelor of arts and science degree graduates to teach—earning a top-dollar entry salary—in 15 months of study.

New Jersey and the metropolitan area have shortages of teachers. FDU's intensive program will increase your marketability while allowing you to enjoy full-time paid teaching internships, receive training in microcomputer and instructional technology, and begin the program without prior courses in education.

Master teaching theories and strategies in your choice of:
• English • English as a Second Language • Multilingual Studies • Mathematics • Science • Bilingual Education, and • Social Studies.

For more information, call FDU at
(201) 692-2839.

FDU
FAIRLEIGH
DICKINSON
UNIVERSITY

An affirmative action
equal opportunity institution

Mark O'Shea of FDU's College of Education will visit Drew University to answer your questions on:

Thursday, April 4, 11 a.m.-1:30 p.m. in the University Center.

All Night Film Festival Schedule:

Friday, March 22: Tolley-Brown Lounge
Admission \$1.00, free if you're wearing pajamas.

8 p.m. *Arthur* 2 p.m. *Animal House*
10 p.m. *Caddyshack* 4 p.m. *Rebel Without a Cause*
12 p.m. *Purple Rain* 6 a.m. *Airplane*

Woody Allen's *The Purple Rose of Cairo* What Is and Isn't Real

by Paul Babbitts

WHICH is more real, life or art? Does anyone control art or does it exist alone, after creation? Woody Allen's new movie *The Purple Rose of Cairo* asks these questions, and provides plenty to think about, but lacks the psycho-analysis that offends many of Allen's detractors.

Although *Purple Rose* is written and directed by Mr. Allen, he does not appear in the film. Mia Farrow is the plain waitress who spends her evenings and weekends at the Bijou watching movies while her out-of-work husband (the film is set during the Great Depression) chases women and gambles. One night, a character from *The Purple Rose of Cairo*, a madcap 1930's comedy, leaves the screen and crosses the boundary from his world (art) into the lives of

waitresses (life). Allen makes clever use of the opportunities available to him once he's created a situation where someone who doesn't exist is here with us. The gargoyles and snappy dialogue between the characters still on celluloid (plot action in the real *Purple Rose* stops, but the characters do not) are typical Woody Allen. But what is of greater interest to the audience is the variety of theoretical situations which arise.

Why don't make believe characters cease to be dependent on the writers and actors after creation? Allen began playing games with his audience's aesthetic values in the mock documentary *Zelig*. This technique, daring us to tell what's real or more real is continued in *Purple Rose*. This is particularly ger-

main to actors and those involved with art. When watching a performance do we see beyond the actor playing the part? In *Sophie's Choice* for instance, do we see past Meryl Streep into the character of a concentration camp survivor, or are we blinded by the image and idea of Meryl Streep? It is the intention of good actors that the line between artifice and reality should be blurred, even eradicated, and it is the expectation of a good audience that disbelief should be temporarily suspended, that what is presented is true and that what or who is on screen is real. Judging by *Purple Rose*, I guess Allen doesn't think either of these things happen often enough: actors pose and do not portray, and audiences do not give the theater or film sufficient license.

Don't let this intellectualization scare you, though. *Purple Rose of Cairo* is a complete charmer. Farrow is superbly star struck by the movie hero come to life. She believes, until cheated by the actor whose character has run amok, what's happening to be true. At one point, she remarks "I've just met the most wonderful man. Of course, he's fictional, but you can't have everything." Jeff Daniels plays the dual role of Hollywood star and wayward character. Good performances abound by the actors who play the members of the abandoned film's cast. Just remember to let yourself think of a poor waitress and a bored character, and not about Mia Farrow or Jeff Daniels or any of the other wonderful players in this thoroughly entertaining and thought-provoking piece.

PUZZLE SOLUTION

S	T	A	S	H	G	R	U	M	P	S	U	G	A	R	C	L	O	M	P
T	A	S	T	E	O	U	T	E	R	E	R	O	D	E	R	I	G	O	R
O	K	E	R	A	M	R	E	A	B	I	M	O	M	L	A				
R	E	A	R	S	T	O	N	E	D	P	A	S	T	E	S	I	N	A	
E	T	H	N	I	C	R	O	I	R	O	N	S	M	A	S	T	E	R	
S	O	U	R	A	P	S	S	C	A	R	E	A	B	B	E	O	S	E	
R	E	L	A	T	E	S	A	V	E	D	B	A	R	R	E	T	R	E	
O	R	A	T	E	M	O	V	E	D	B	O	R	E	S	P	R	A	S	
L	I	N	E	T	I	B	E	R	P	A	G	E	D	C	L	A	U	S	
L	E	D	F	I	L	E	S	M	I	N	U	S	C	H	A	N	T	E	
T	A	M	E	R	R	I	N	D	S	B	L	A	N	D					
S	T	A	R	T	E	R	H	U	N	T	S	C	E	A	S	E	M	E	
A	R	G	U	E	D	R	O	D	E	O	P	H	A	S	E	M	U	L	
S	I	R	E	S	C	U	T	E	R	S	O	U	R	S	P	O	S	S	
S	P	A	S	P	O	S	E	R	R	I	O	T	S	B	A	S	H	E	
T	R	A	V	E	L	S	I	D	L	E	M	U	S	T					
A	C	H	A	C	E	S	R	U	L	E	S	C	U	R	S	T	A	L	
C	H	A	R	T	E	R	H	O	P	E	S	O	H	S	E	D	A	T	
T	I	G	E	R	G	E	T	U	P	T	H	R	O	A	T	R	E	E	
O	S	S	A	I	V	I	S	O	E	A	I	C	A	T	A	G			
R	E	B	E	C	R	O	G	E	R	P	R	I	C	E	A	S	E		
S	L	A	T	E	L	E	A	S	T	S	E	D	E	R	A	D	D	E	

MUSIC

MTV: Providing a Bittersweet Combo

by Jim Brown

SINCE the arrival of MTV in August of 1981, music videos have achieved growing popularity and an expanding impact on the music industry. Yet certain questions arise involving the future of this media and its fairness to the artists and music.

MTV is the only 24-hour-a-day, all-stereo, video music channel. Geared to the 12-34 year-old rock music viewer, a recent Nielsen Poll shows MTV netting 25.4 million subscribers, making them the largest cable service in existence. The numbers alone indicate MTV's great potential for influencing their audience. But interest in numbers is MTV's biggest drawback. The standard public relations press packet MTV Networks Inc. distributes reads more like a Wall Street financial statement than a report on the state of video music. Ideally, MTV should direct their interest to the contribution they can make to music and music video as an art form.

This is not to say that the Music Television Network ignores music as an art, they simply fail to emphasize this dimension of their presentation. On Sunday nights, MTV quietly offers two programs which are dedicated to the advancement of music. "The Cutting Edge" presents new music from around the world. The focus is put on many of the underground groups that would never receive national attention without the influence of MTV. "London Calling" offers a taste of the British beat with videos of new British groups, London club and concert footage, and interviews with some of England's best acts.

Both shows present a lot of the new

music that will be influencing tomorrow's pop trends. Unfortunately, MTV doesn't promote these segments, which advance the music art form, the same way they publicize their more sugar-coated events, such as "Friday Night Video Fights" or "Top Twenty Countdown." In other words, MTV is missing their chance to really make an impact on music.

Although MTV may be missing the boat in one aspect, a lot can be said for what they have accomplished. MTV has offered a new alternative to the music scene. Videos have been transformed from poorly filmed concert footage into a highly complex art form. Videos such as Michael Jackson's "Thriller," Billy Joel's "Keepin' The Faith," and The Cars' "You Might Think" (conceived by Andy Warhol) have gone to the very pinnacle of the music video art form.

For those artists that are actively involved in social issues and politics, videos offer the opportunity to better explain what their music is all about. This extension of the art form is best seen in Bruce Springsteen's "Atlantic City," Mer At Work's "It's A Mistake," and The Clash's "Rock The Casbah."

The state of music video can best be summed as follows. On the production end, music video is being recognized as the art form it has the potential to be. Producers are introducing new themes, new effects, and quality videos. Unfortunately, on the presentation end, videos are still being shown as cheap visual add-ons to pop music. Once programs such as MTV realize their potential, the music video art form should flower to receive the respect it deserves.

Alternative Notes

by Ted Bowes

SISTERS OF MERCY is a band I've been raving about for weeks it seems. Much to my delight they finally released another album, after the release of two EP's. Each of the EP's title tracks "Walk Away" and "No Time to Cry" are featured on the album. Each and every song on the album is as good or better than the two pre-released tracks. The sinister voice and guitars, the trademarks of the band continue, but not in that horrible way that makes some groups sound the same cut after cut.

Britain has always supplied the world

hardcore and garage style bands thanks to Gerard Cosley at Homestead Records. Naked Raygun is one of the best punk albums I've heard in a while. The first cut, "Rat Patrol," reminds me a great deal of the Dead Kennedy's. Other titles such as "Surf Combat," "I Don't Know," and "Managua" will without a doubt climb both college and progressive radio playlists.

The Flies are also a new release at la Homestead. Their fuzzy garage style combined with Nat Freeberg's nasal voice is great in "The Only One" and "All Hung Up." Even their cover version

THE FLIES GET WISE



with outstanding music, but as of late some excellent material is finding its way to our shores. Alison Moyet's newly released album in the U.S. is a case in point. "Love Rapture" and "All Cried Out," although released late last year, have shared rapid success on the progressive and dance scene. Other songs such as "Honey for the Bees" and "Invisible" are destined for the same good fortune. The songs may sound surprisingly popish, but Alison's delivery is anything but.

In a completely different vein, I have had the chance to listen to some great



of "2000 Light Years From Home" is outstanding. If you liked early Kinks give these guys a try. Of special interest is the new Velvet Underground album. The recent release contains previously unreleased songs that are grabbing the attention of progressive media. Critics love it, and audience response, according to CMJ's New Music Report, is at #4. Two of the standouts from the album are "I Can't Stand It" and "Foggy Notion."

In closing I would like to thank the heavens for surviving another mid-winter lull in music.

AS OF MARCH 13, 1985		
PROGRAMMING		
This report does not include videos in recurrent or older rotation.		
VIDEOS ADDED THIS WEEK		
JOAN ARMSTRONG: TEMPTATION A&M		LIGHT
JOHN FOGERTY: ROCK 'N' ROLL GIRLS Warner Bros.		POWER
THE FOOLS: DO WHAT DIDDY PVC		NEW
B.B. KING: LUCILLE MCA		LIGHT
LIMAH: NEVER ENDING STORY EMI America		BREAKOUT
ALISON MOYET: INVISIBLE Columbia		LIGHT
TOM PETTY & THE HEARTBREAKERS: DON'T COME AROUND HERE NO MORE MCA		POWER
THE STRANGLERS: SKIN DEEP Epic		LIGHT
TEARS FOR FEARS: EVERYBODY WANTS TO RULE THE WORLD Mercury		LIGHT
TOTO: HOW DOES IT FEEL Columbia		LIGHT
TRINITY: FOLLOW YOUR HEART J&C		LIGHT
THE TUBES: PACE BY PACE Capitol		BREAKOUT
NARADA MICHAEL WALDEN: GAME GIMME Warner Bros.		LIGHT
POWER ROTATION		
CHICAGO: ALONG COMES A WOMAN Full Moon/Warner Bros.	4	
ERIC CLAPTON: FOREVER MAN Warner Bros.	3	
DON HENLEY: ALL SHE WANTS TO DO IS DANCE Geffen	3	
U2: A SORT OF HOME COMING Island	3	
PETER DINKLAGE: OO-EH-BIDDLEY-BOO EMI America	2	
ACTIVE ROTATION		
AUTOGRAH: TURN UP THE RADIO RCA	16	
THE CARS: WHY CAN'T I HAVE YOU Elektra	8	
DURAN DURAN: SAVE A PRAYER Capitol	15	
JOHN FARR: NAUGHTY NAUGHTY Atlantic	16	
SANTANA: SAY IT AGAIN Columbia	4	
"SCANDAL" FEATURING PATTY SMYTH: BEAT OF A HEART Columbia	7	
SIMPLE MINDS: DON'T YOU (FORGET ABOUT ME) A&M	8	
TEENA MARIE: LOVER GIRL Epic	16	
"THE TIME" JUNGLE LOVE Warner Bros.	20	
TINA TURNER: PRIVATE DANCER Capitol	10	
MEDIUM ROTATION		
ANIMOTION: OBSESSION Mercury	17	
ASHFORD & SIMPSON: SOLID Capitol	10	
DAVID BOWIE & PAT METHENY: THIS IS NOT AMERICA EMI America	4	
ELLIOT GARDNER: LIKE A WHEEL Elektra	4	
GENERAL PUBLIC: NEVER YOU DONE THAT IRS	3	
SAMMY HAGAR: V.O.A. Geffen	7	
*JOAN JETT: I LOVE YOU LOVE ME MCA	16	
B.B. KING: INTO THE NIGHT MCA	6	
*MADONNA: CRAZY FOR YOU Geffen	8	
ALAN PARSONS PROJECT: LET'S TALK ABOUT ME Arista	4	
SADE: SMOOTH OPERATOR Portrait	4	
TOMMY SHAW: FREE TO LOVE YOU A&M	2	
BREAKOUT ROTATION		
BROWNS BEAT: SMALL TOWN BOY MCA	12	
LLOYD COLE: PERFECT SKIN Geffen	8	
DEEP PURPLE: KNOCKIN' AT YOUR BACK DOOR Mercury	4	
FIORA: TALK TO ME Atlantic	2	
GARY O: SHADES OF '45 RCA	3	
ROBIN GEORGE: HEARTLINE Bronze/Island	7	
GO WEST: WE CLOSE OUR EYES Chrysalis	6	
DAN HARTMAN: SECOND NATURE MCA	5	
GREG KINN: LUCKY EMI America	5	
HUEY LEWIS & THE NEWS: BAD IS BAD Chrysalis	3	
LOS LOBOS: WILL THE WOLF SURVIVE Warner Bros.	11	
LIB: PLAYIN' TO WIN Capitol	7	
THE NAILS: LET IT ALL HANG OUT RCA	5	
ROMAN HOLLIDAY: ONE FOOT BACK IN YOUR DOOR Jive/Arista	10	
STONE FURY: LIFE IS TOO LONELY MCA	5	
TIL TUESDAY: VOICES CARRY Epic	3	
ZOT: URANIUM Elektra	4	
LIGHT ROTATION		
BIG COUNTRY: EAST OF EDEN Mercury	4	
ERIC CARMEN: I WANNA HEAR IT Geffen	4	
CORREY MATCH: FANTASY Mercury	2	
DORKEN: JUST GOT LUCKY Elektra	6	
DAVE EDMUNDS: HIGH SCHOOL NIGHTS Columbia	2	
ROGER HODGSON: IN JEOPARDY A&M	4	
DOBBIE IRIS: INJURED IN THE GAME HME/CBS	2	
JASON & THE SCORPIONS: WHITE LIES EMI America	2	
HOWARD JONES: THINGS CAN ONLY GET BETTER Elektra	2	
RUN-DMC: KING OF ROCK Profile	4	
THE SMITHS: HOW SOON IS NOW Warner Bros.	5	
THE VELVETS: LOOK MY WAY Mercury	5	
JOHN WAITE: CHANGE Chrysalis	5	
WIDOW BITCH: Epic	6	
NEW ROTATION		
ALPHAVILLE: FOREVER YOUNG Atlantic	3	
ANGEL CITY: UNDERGROUND MCA	7	
BANG BANG: THIS IS LOVE Epic	2	
THE BLUEBELLS: I'M FALLING Sire	2	
COSMETIC: SO TRANQUILIZIN' Gramvision	2	
EVERYTHING BUT THE GIRL: NATIVE LAND Sire	9	
CHRIS ISAK: DANCIN' Warner Bros.	3	
KEEL: THE RIGHT TO ROCK Gold Mountain	5	
KING KOBRA: HUNGER Capitol	5	
LOUDNESS: CRAZY NIGHTS Arista	5	
MALCOLM MCLAREN: MADAME BUTTERFLY Island	2	
NORMAN MARDINI & THE TIGERS: IF YOU DON'T WANT ME CBS Associated	5	
OMD: TESLA GIRLS A&M	9	
PSEUDO ECHO: THERE'S A BEAT FOR YOU EMI America	5	
DANNY SPANOS: I'LL BE FOR YOU Epic	2	
JERMAINE STEWART: THE WORD IS OUT Arista	8	
JACK WAGNER: PREMONITION Qwest	4	

MUSIC

The Club Scene Outside of The City

by Ted Bowes

WHILE New York may be the only place for the majority of students here at Drew to go to party, Manhattan is not the only town to go to. The outer boroughs and even New Jersey have clubs and bars that can be equally as fun.

On Staten Island, the Parkville II isn't where you would expect to find a downtown style club. The drive may not be for everyone, but at 45 minutes to an hour, it's not that bad. The club itself resembles a cross between Studio 54 and the Peppermint Lounge. The club is not excessively large or noisy.

Recently the Parkville II hosted The Bongos who have just released a new album. Their show was both exciting and enthusiastic. While their overall sound contains pop overtones and upbeat tunes, their songs aren't the drizzle often associated with mainstream rock. The band had obvious crowd appeal that resulted in a great time for everyone in the club.

Hoboken is the last place anyone would expect to find a little bit of the Village, but on 11th and Washington is Maxwell's Tavern. Maxwell's during the early evening was a yuppie hangout and later turned into a Village bar. As well as a bar and restaurant, Maxwell's has a separate room for bands and music. Last Thursday the 14th, The



Salem 66, a good new progressive band will play at Danceteria on May 11th.

Three O'Clock and Salem 66 performed.

Salem 66 is a four piece rock 'n' roll band that once was all female, but now with the addition of Robert Wilson, they fit the more traditional form of two guitars, bass and drums. Hailing from Massachusetts, they didn't appear to love Jersey, but took it all in stride.

Salem 66 has a unique sound that can't really be pinned down to any particular form of music. They resemble most the psychedelic garage sound. Judy Kaplan and Beth Grunwald both sing vocals and each have voices that are luring, and even siren at times. The band will be touring for a short time.

on the West Coast, returning to play Danceteria in Manhattan on May 11 (that's right, Graduation Night).

Maxwell's offers an entire spectrum of bands, so if you're interested you might want to give them a call. Two upcoming bands to consider seeing are Tetes Noires and the Droogs.

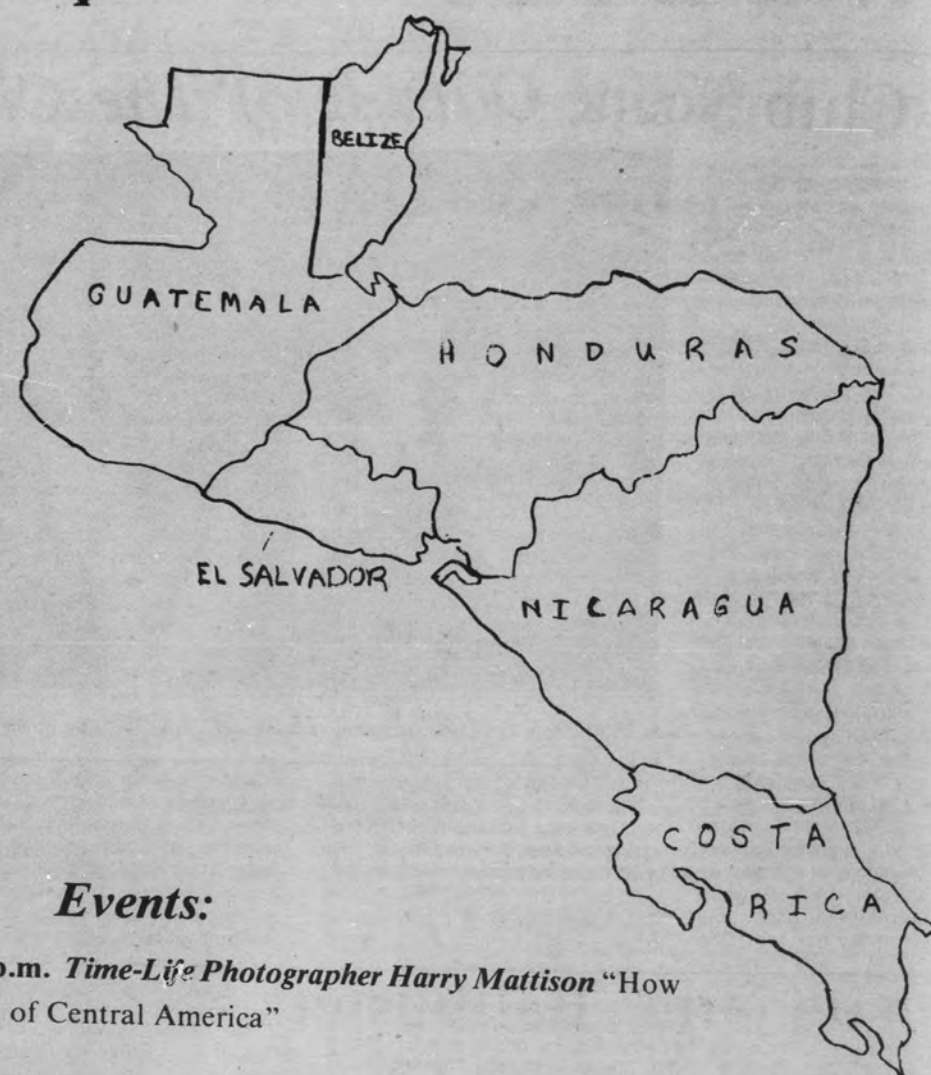
Warwick

is Coming

Be a Part of It

Applications Available at the U.C. Desk
on 4/15/85

Central American Focus March 24—April 12



Events:

Sunday, March 24 LC 28 7:30 p.m. *Time-Life* Photographer Harry Mattison "How the Media Distorts the Realities of Central America"

Saturday, March 30 Pub 6 p.m.-8 p.m. *Central American Dinner* Make Early Reservations-Limited Space Available. Contact Felipe Velez, CM Box 1781
Central American Music 8:30 p.m.-10 p.m. With Lactamasi-Nicaraguan and El Salvadorean Themes

Monday, April 1 UC 107 7 p.m. "Current Crisis in Central America: Political, Historical, and Economic Roots" Panel discussion with Professors Bill Mesmer (Psci), Fred Curtis (Econ), and Tom Christofferson (Hist)

Wednesday, April 3 UC 107 7 p.m. "Building Revolutionary Nicaragua: Politics and Economics" Discussion with University of Massachusetts Ph.D. Candidate Mr. Zalkin

Friday, April 5 Lewis House (Spanish House) 7 p.m. *Ma Elena C. Kankun*. She has appeared on the Phil Donahue Show and is part of the Children of War Tour. She will discuss her home country of El Salvador

Friday, April 12 Craig Chapel in Seminary Hall 11 a.m. *Professor Joan Weimer (English)*. She will discuss the human cost of U.S. policy on the people she met during her recent trip to Nicaragua

Sponsored by:

Ariel, DEAL, Drew University Peacemakers, Drew University Theological Peace Ministry, Hyera, International Students Association, Marie Roberts—University Chaplain and Women's Concerns

SPORTS

Cavalli, Hewlett, McDonald to Spark Women's Lax in Defense of MAC

by Mary Burke

THE Women's Lacrosse Team will be defending their Mid-Atlantic Conference (MAC) title this year in addition to striving to make the Nationals at Philadelphia's Franklin Field in May. The team comes back with a new assistant coach, a strong line of returning attack players, and a crop of new talent that shows true potential.

The assistant coach this year is Claudia Fulshaw, a Trenton State College graduate from Spring '84. Claudia played lacrosse as a first home for four years at Trenton, was leading scorer her senior year with 46 goals and was named to the All-American team. Fulshaw noted that she had always wanted to coach, but never thought she would have the opportunity to do so with her Art major, so "when the chance came to coach at Drew, I grabbed it." Fulshaw says she had followed the Drew team last year, but added, "I didn't realize how strong the team was until now.

Drew is recognized, but not as highly as they should be, which is good, since people take us for granted and we surprise them."

Returning to the Rangers this year will be the two leading scorers from last year, senior attack wing tri-captain Judy Cavalli and junior All-American tri-captain Colleen Hewlett. The third tri-captain is senior defense wing Cheryl McDonald. Also returning are senior second home Claudia Higley, senior first home Pam Housley and junior defense wing Robyn Aberbach. Returning sophomores include last year's third leading scorer, third home Jody Evans, third home Mary Burke, defense wing Rhonda Jackson, and goalie Liz St. John. Two freshman back up St. John, Sally Ottoway and Liz Bungo. Other new talent includes frosh attack wing Ann Gunster, third man Lisa Paolini, and Sally Gormley, whom Fulshaw noted "will be a strong player." Kim Whyntot will be a versatile attack player,

Laura McKay will play coverpoint, and Ingrid Deklau will play defense wing. Bonnie Etheridge will also be playing defense as a third man. Fulshaw noted that Etheridge will be a strong link in the defensive end, "especially with her speed and aggressiveness." Other new players include soph attack wing Suzie Bessin, a transfer from Johns Hopkins, junior second home Joan Choy, and senior point Sally-Jo Placa.

The team went to Bermuda for spring training, and Fulshaw, felt that "Bermuda was excellent." She further went on to say how pleased she was to see the improvement in all of the players as well as adding that being with the same people for ten days really helps the team to get to know each other well, which she feels will be important for the success of the team this season.

Fulshaw feels that the team will most definitely be able to defend their MAC title this year, though she said it is

"harder to defend a title than to get one." The National Championship will definitely be a target for the team this year. Already, a pre-season poll by Division III coaches has Drew ranked 10th in the nation. Since the top twelve teams go to the nationals in May, Fulshaw remarked that "holding our ground and staying consistent" will be Drew's key to achieving this. Colleen Hewlett also noted that "it would be nice to give the graduating seniors a national title." Hewlett added that one of her goals this year is an undefeated season; the team was 7-6 her freshman year, 13-2 last year and would like to be 13-0 this year in regular season play.

In closing, Fulshaw noted, "We can be in the final four come mid-May if we work hard all season, and if we get there, we'll deserve it." The season opens this Saturday at home, 11 a.m., against MAC rival Lebanon Valley.

Johnson Nine, Ballbusters Intramural Soccer Champs

by Dan Chiariello

THURSDAY (Feb. 28) was the last day for the men's intramural playoffs. Since the semifinal spots were already determined, though, the games were of less importance. The Has Beens shut out the Johnson Nine 4-0 and Detroit beat Horatio 2-0. However, the Cherry Pickers provided the most excitement. With a half a minute to go and Ajax up 2-1, Chris Habersaat knocked in a rebound and at the buzzer Lou Devos fired home a shot to lift the Cherry Pickers to a thrilling 3-2 upset.

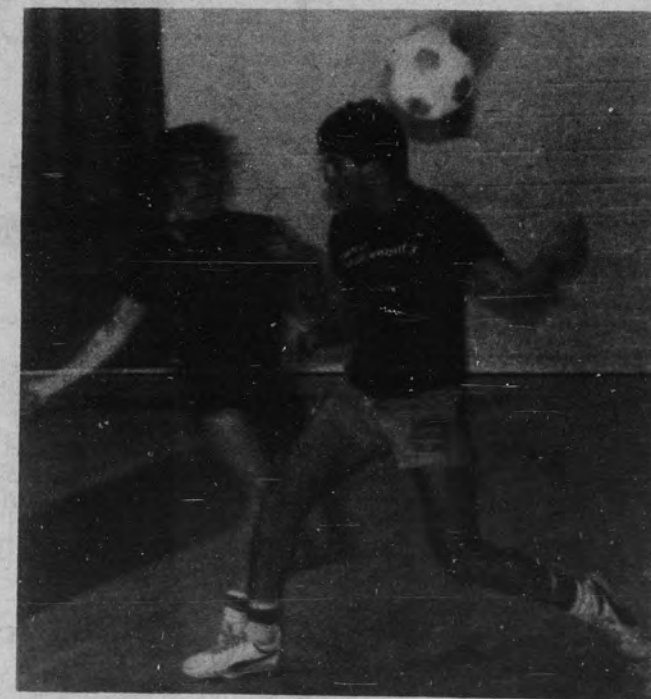
On Tuesday, the semifinals were held. In the first game, the appearance of Mike Johnson in the nets for the Johnson Nine seemed to make the difference as they ousted Detroit from the playoffs, 1-0, on a Rob Falvo goal. Next, the Has Beens earned their championship berth by beating Ajax, 3-1. This set up Thursday night's matchup, which proved to be quite a game. Early in the game, Rob Falvo netted two goals, both on deep shots into the corners. The Has Beens fought back for a goal off the foot of Charlie Dugan. The Johnson defense tightened, though, and held on to win the game, 2-1, and the title.

In the Women's division on Thursday night, the Wolverines beat the Ballbusters 2-0 and the Cowtippers forfeited a win to the Rebels. On Tuesday, the top two teams met again and once again, it was the Rebels on top, 2-1. In the final game of the season, the Ballbusters climbed out of the cellar with a 2-1 come from behind victory over the Cowtippers.

Then, on Thursday, the two biggest upsets of the season took place, as the top two teams were both denied championship game spots in playoff action.

The first shock occurred when the Wolverines and the Ballbusters battled to a scoreless tie after two overtimes. With the game sent into penalty kicks, Denise Browne stopped the Wolverines' last shot and brought the Ballbusters the victory. After that, the 1-5 Cowtippers scored two quick goals against the 6-0 Rebels. The Rebels rallied to tie the game, but with a minute to

go they gave up an own goal to give the Cowtippers their berth. The championship game between the Ballbusters and the Cowtippers went into overtime after a scoreless regulation. With about a minute gone by in OT, the Ballbusters' Jodi Geiser picked up a rebounded shot from Jean Canavan and pushed it in to give the Ballbusters their surprise championship.



Johnson Nine capture soccer title.

Pitching Key For Diamond Hopes

by Rick Alembik

CROCUSES budding in front of Sycamore Cottage, a hint of blue in the sky, and the crack of ball and bat indicate that Spring is upon us. Coach Vince Masco's Baseball Team, like the Spring weather, is set to go this year, and like the capricious March forecast, is everything but predictable.

The team held spring training in Fort Pierce, Florida over the break last week. The Rangers concluded their practice game schedule with a 1-4 record against some very strong Division I teams. A stand out hitter was freshman John Didyk, who hit 5 for 12 with 4 walks.

The team went 9-15 last year. Masco is "shooting for better than .500" this season. "This is the best Drew team in the past few years because of its depth at all its positions." Last year, the Rangers contended for first place in their division of the MAC with Delaware Valley, but to no avail, as they ended up in "the middle of the pack."

The key to a winning record for Drew will be their pitching. "If our pitchers stay ahead of the hitters and keep the strikeout to walk ratio even, we'll have a successful year," predicts Masco. Ace hurler Tommy Spencer, who was 2-4 last year with a 3.28 ERA, is expected to head the pitching staff along with two other definite starters, Tom Driscoll and Jim Cegielski. Two lefties, Mike Nicolai and Brett Spector highlight the bullpen.

Masco espouses the "new look" in Drew's hitting with the return of Jim Meneilly from knee surgery in the fall. Meneilly, a senior who has started for the

Continued on page 14

SPORTS

Confessions Of A Hoop Junkie : The Road to Lexington

by Mr. Roundball

OK, I'll admit it. I didn't go south for Spring Break. In fact, I went north. North is home. And inside my home is a little 9" by 4" box with 36 channels. For about \$8.00 a month I can watch ESPN, the all sports channel, during Spring Break, for 24 hours a day. The week I was home the featured sport was Basketball—the NCAA College Basketball Tournament to be exact. You know, "March Madness," "The Final Four," "The Road to Lexington." Well, while ingesting all these games, I came across some gut-wrenching questions and compiled some All-Star Teams. So here goes:

*What happened to Syracuse's Pearl Washington this year?
*Was anybody cheering for Georgetown when they were ahead of Lehigh 49-11 at the half?

*Speaking of Lehigh, what were the Engineers (12-18) doing at the tournament? Better yet, what were they doing playing Georgetown?

*How did Hugh Durham ever let Kenny "Sky" Walker of Kentucky get out of the state of Georgia?

*Does anyone really believe Louie C. when he tells us how much he loves his Redmen being shipped out west?

*Was Boston College's win over Duke really an upset with the Blue Devils' lack of a center?

*What were Notre Dame and Dayton doing playing on their home courts?

*How can Louisiana Tech be considered a "darkhorse" with a 29-3 regular season record?

*Who had more turnovers in the tournament — Notre Dame's David Rivers or Syracuse's Pearl Washington?

*Why were there more Catholic priests the players on the benches when Georgetown played Loyola (IL)?

*Has there ever been a team with "badder" haircuts than the Pepperdine Waves?

*Why does Lehigh have a larger on-campus gym than Georgetown?

*What was an entire Lehigh student section doing in attendance at the Big East Tournament? Did they know something we didn't?

*Is there a better rebounding guard than Georgia Tech's Bruce Mayumbe?

*Is it true that there are 63 teams in the NCAA tournament competing for second place?

The NCAA Tournament All-Slam Dunk Team

(Regardless of position)

-Patrick Ewing (7'0" Georgetown) Best Dunker in the pivot since Wilt the Stilt. Four for four in second half vs. Temple.

-Kenny "Sky" Walker (6'8" Kentucky) Nickname only begins to let on to his vertical levitation prowess. Two key slams to ice upset win over UNLV.

-Len Bias (6'8" Maryland) 40" vertical leap and strength of a Marine put Bias on first team. Best dunker off a two foot jump. His dunks are religious experience.

-Wayman Tisdale (6'9" Oklahoma) "Mr. airity" when it comes to slamming. Specially is the 2-handed reverse. His dunks make Oklahomians forget about football. More jams in him than a case of Mason jars after your grandmother got through with them.

Basketball

Continued from page 13

past two years and who is a New Jersey College All-Star, will be moving into the first base position. He has the highest batting average on the team. The two long ball hitters, Driscoll and Spencer, led the team in doubles and triples respectively last year. Driscoll will shift from first to leftfield. Spencer, when not pitching, could take the first base or designated hitter spots.

The tentative hitting order is loaded with freshmen. John Didyk will lead off. Mike Nicolai, a sophomore centerfielder, will bat second, while frosh second sacker Chris Holland will bat third. Menally will bat clean-up.

Defensively, the team looks very good. Jeff Klinger and Mike Tesoro share rightfield. Mike Alvarez and Chris LaClair are battling for the shortstop job. Jim Robinson and Dean Ciriaces will share the catching position.

The Rangers opened yesterday against Dominican. On Saturday, they play King's at home in an MAC doubleheader, while Sunday and Tuesday bring road trips to Ivy League powers Columbia and Princeton. Since all league games are doubleheaders, pitching the big "if" will make or break the team.

-Spudd Webb (5'7" N.C. State) For pure amazement Webb's jams are among the best Leaps as if he had just left a trampoline. When he dunks he has every small guy who ever played basketball behind him.

Honorable Mention
William Bedford 7'0" Memphis St.
Keith Lee 6'10" Memphis St.
Larry D. 's 6'9" S.M.U.
Larry Hampton 6'9" F.D.U.-Teaneck
Carl Wright 6'5" S.M.U.
Lorenzo Charles 6'7" N.C. State
Walter Berry 6'8" St. John's

SPORTS

Tough Schedule Doesn't Faze Ranger Netters

By P.J. Cimini

FACING what Head Coach Vern Mummert calls "the toughest schedule ever," the Men's Varsity Tennis Team begins its Spring '85 schedule this week. The Rangers, coming off a 13-2 season, must be ready to face three nationally ranked squads in Salisbury St., Franklin & Marshall, and Upsala. Even though the slate is a good one, Mummert has high hopes for the team.

"I'm cautiously optimistic about the season," Mummert said. "Yes, we have

the tough schedule and lost some key players, but everyone has trained very hard and very well."

The team went South to the Bahamas for Spring Break, in search of other college competition. And while problems came up with the opposing teams, the trip was still viewed as a success. "We were supposed to meet five other teams but they cancelled due to financial reasons," Mummert stated. "But we practiced and it went well."

The strength of the Rangers rests in their returning players. Led by #1 returning singles player, junior Peter Schnatz, the Rangers have a strong cast of ath-

letes. The #2 singles spot is held down by senior Craig Rubinstein. The 3rd spot is occupied by senior Dan Wolff, with the 4th singles player being Marc Bernstein. "Peter and Mark will provide most of our points," Mummert pointed out. "Dan and Craig have always done well, and will carry us through the season." The singles group will be a crucial area for the team. "For us to be successful, we will have to win singles matches consistently," said Mummert.

The doubles group is divided into three levels. The #1 team is made up of Schnatz and Wolff. The #2 team is Rubinstein and Bernstein, while #3 is

senior Tom Andrews and frosh Kenny Ralph. Rounding out the squad are freshman Rich Altman and soph Mike Goldstone, both of whom, Mummert notes, "have been working very hard."

With some tough matches ahead of them, the Rangers will be in for a lot of hard work. "We might surprise some people," Mummert said. "These guys can really challenge, they have strong competitive drives. The seniors have never had a bad year yet." And with the seniors striving for a fourth straight successful campaign, the Rangers are sure to provide some exciting tennis for the Drew campus.

Frank Leads a Young Women's Tennis Team

by Marnie Hiestler

THE Women's Tennis team returned from the Bahamas with polished skills as well as terrific fans. Coach Patty Beagan comments, "Now we have two more weeks to put things together before our season starts." They will be hitting off their 1985 season on April 1st.

Leading the young team will be sophomore Caryn Frank, last year's #3 singles and team MVP with a 4-2 record. The rest of the team is composed of ten first year freshmen and sophomores: Yonca Atayolu, Leslie Becker, Sassy Bulanhagui, Dana Cacciatore, Jodi Geiser, Sue Kay, Debbie Mason, Wendy Morris, Chris Schuster, and Tina Todaro. Managing the 1985 net women is freshman Diane Clarke.

The week in the Bahamas afforded the women an opportunity to work on volley games and on building consistency. Beagan stated that her major emphasis was on doubles due to limited court space. Pairing up against two

more experienced teams, Catholic University and Randolph-Macon, "gave the players an idea of what they would be coming up against in the future."

During the next two weeks of practice at the Florham Park Municipal Courts, the team will be developing its lineup with "no spot left uncontended," says Beagan. Beagan looks to Caryn Frank as a team leader and cites Jodi Geiser as "a promising player, one of the top contenders." Praising her charges for being a highly spirited group, Beagan states, "We look forward to a lot of fun as well as a lot of hard work." Her outlook for the upcoming season is optimistic. "We could do fairly well. We'll take each day as it comes."

The Women Netters begin their 1985 season on April 1 at Cedar Crest College. They will make their first home appearance on April 3rd against King's College. The home matches will start at 3:00 PM at the Florham Park Municipal Courts. Beagan encourages any other interested women tennis players to contact her to try out for open positions on the team.

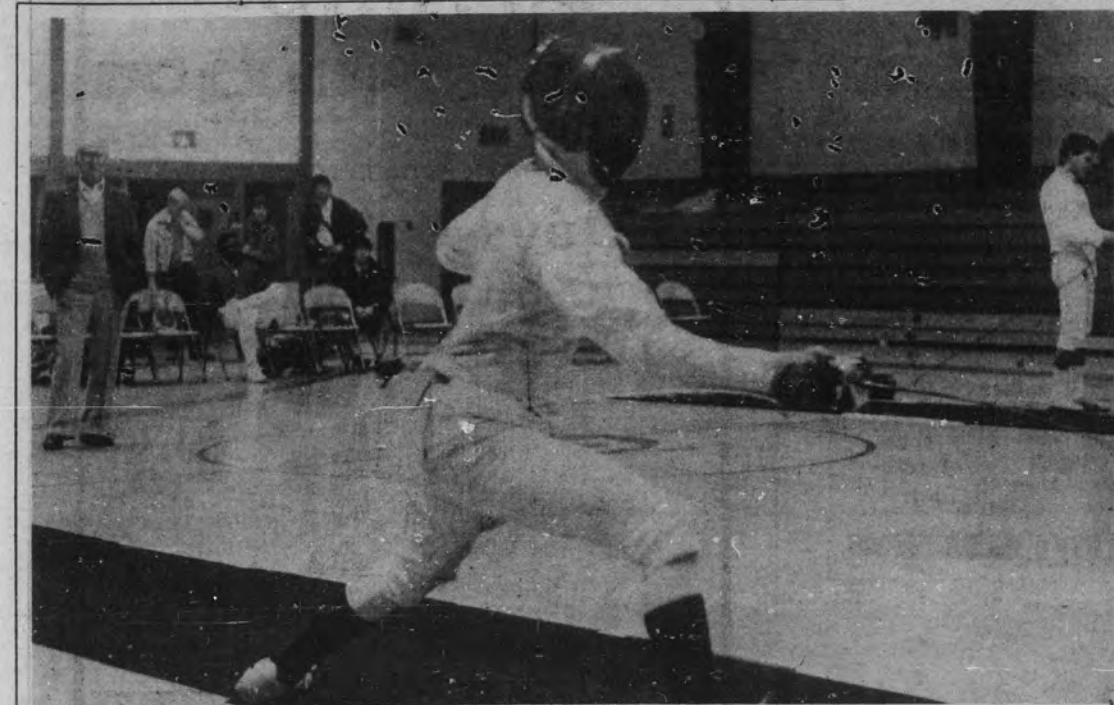


The Drew Rugby Football Club open their spring season this Saturday, March 23rd at home on the Mead Hall field against St. John's. Game time is 1:00pm.

Volleyball Next on Intramural Schedule

by Dan Chiariello

INTRAMURAL Volleyball starts on Thursday night, with 20 teams competing for the top spot. Volleyball has traditionally been Drew's most popular intramural sport, and this year is no exception. Nearly one out of every eight students on campus participate (240 in all). The games take place on Tuesday, Thursday, and Sunday nights from 7:15 to 10:15. The league this year is divided into two divisions, and the top four teams in each division will earn a spot in the playoffs. Who are the favorites? Well, you never know in Volleyball, but some teams to watch are Quinn's Team, Opus II, the Die-Hards, T.D.R.P., Phi Sigma Gamma, and Lippy Goes to Hollywood.



The Drew fencing team finished their '85 campaign with a final record of 2-9. Individually, senior Molly James led the way with 20-13 record in foil competition. Senior Bill Schubert sparked the Saber squad with a 17-16 mark, while epee leader, Mark Soler, also finished at 17-16.

Benefit Drew Scholarship Fund
10% of Retail Income will be donated to Drew University
Myrtle Beach, South Carolina
Ocean Front Condominium

Golf	Tennis	Pool	Sauna	Etc...
Fully Equipped		Sleeps Six		-Year Round

Contact:
Adolph Schimpf
70 Cross Road
Cedar Knolls, NJ 07927
(201) 267-5167

NOTICE!
QE2 STANDBY FARE TO EUROPE—NOW \$599.

This standby fare provides a berth in a room for 4 (we'll find traveling companions for you). Or, for \$699, sail in a minimum grade room for 2 people. This limited offer is subject to withdrawal without prior notice and may not be combined with any other offer. Rate does not include taxes or airfare. Confirmation will be given 3 weeks prior to sailing.

a \$75 deposit is required with your request. For details, see your travel agent or write: Cunard, P.O. Box 2935, Grand Central Station, New York, N.Y. 10163.

QUEEN ELIZABETH 2
British Registry

CUNARD © CUNARD 1985

COLLEGE SPRING BREAK
FLORIDA
\$99.00
PLUS \$20 TAX & SERVICE
ROUND TRIP MOTORCOACH TRANSPORTATION
9 Days • 7 Nights
DAYTONA BEACH **FORT LAUDERDALE**

TRIP DATES:
March 2 - March 9
March 9 - March 16
March 16 - March 23
March 23 - March 30
March 30 - April 6
April 6 - April 13

BOOK EARLY!
Reserve Hotel Space in Ft. Lauderdale and Daytona Beach.

TOUR RATE INCLUDES:
• Round trip transportation in a comfortable motorcoach with experienced driver and Ft. Lauderdale and Ft. Lauderdale
• Breakfast, lunch, and dinner
• Souvenirs, shopping, and more

Active TOURS
252-02 Northern Boulevard • Little Neck, New York 11363
New York City Long Beach Washington New Jersey
718-631-3840 718-772-7700 718-772-7700 718-772-7700

SPORTS

Rangers Rout Lebanon Valley in Opener

by Michael Zeldman

THE Men's Lacrosse Team whipped Lebanon Valley (PA) on Wednesday in their first game of the '85 season. The Rangers took early command of the game and were ahead 6-1 at the end of a damp first half. The rain let up but the Rangers didn't as they went on to win, 16-5. Lebanon Valley was helpless as Drew dominated the game with successful clearing and riding as well as ground balls. All of the players saw plenty of time as "everyone played hard. I was very pleased," stated Associate Coach Tom Leanos.

The Rangers outshot their opponent 48-25 as a variety of players put on a show for the home crowd. The barrage of goals was sparked by attackman Steve Szlasa's four goals and three assists. Sophomore attackman Drew Gagliano scored three times and had two assists while Drew's all-time leading scorer, Terry Stansfield, added two goals and an assist. Sophomore Preston Turner had the honor of scoring Drew's first goal of the season, and also added three assists. Jim Brock, Peter Litton, Jim Lyons, Nick Angle, Mike Zeldman and tri-captain Greg Schildwachter all added one goal apiece. Junior tri-captain Kevin Swank played superbly in goal, making six saves and allowing only two goals. Freshman Rich Schmidt, subbing for an injured Jim Benson, played an outstanding game, dominating both ground-balls and face-offs. Dave Gentile also turned in a strong performance.

The Lax team is looking to make this their first winning season ever after finishing 6-7 last year. "We are playing stronger teams this year, but we are capable of having a winning season," said Coach Szlasa.

A relatively young team, the Rangers will depend on frosh to play key roles this season. Jim Cromwell, from St. Albans School, has his work cut out for him as a starting middie and key man on the clearing team. Jim Brock, a converted middie from Rocky Point High



Ranger Lax player scrambles for ball in Wednesday's 16-5 Drew victory.

Jim Benson

School in Long Island, continues to perform well.

Right now, the midfielders are unsettled as Szlasa continues to experiment with different combinations. Starting at mid-field in Wednesday's game were Schildwachter, Turner, and Cromwell. The second line consisted of face-off man Dave Gentile, Schmidt, and Brock, while the third line is made up of Andy Diviney, Mike Zeldman, and Paul Cocja. Fourth and fifth lines will be drawn from

remaining middies Dave Ballard, Ken Krasnow, Tom Laub, Chris O'Brian, and Jaime Pagliocco.

Freshman attackmen Jim Lyons and Peter Litton back up returning players Stansfield and Gagliano, and transfer Szlasa. Also playing attack are Nick Angle and Rob Geist.

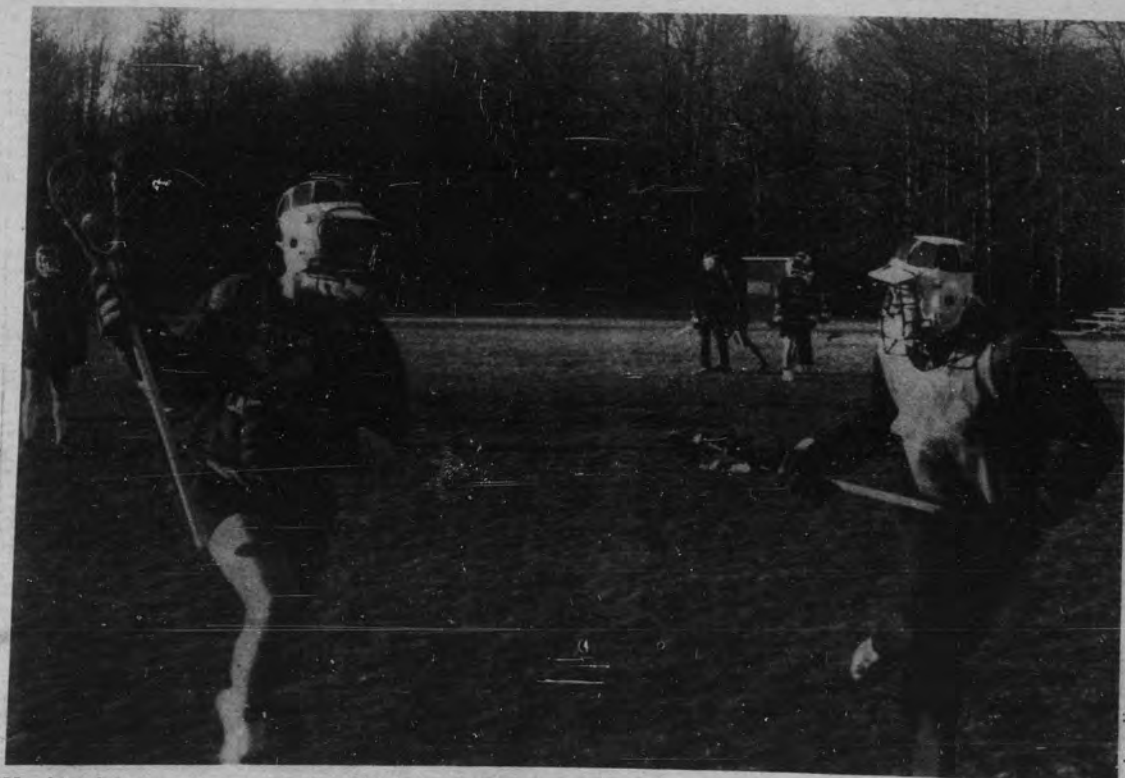
"A pleasant surprise," according to Szlasa, is new-comer Dave Steffano, who has battled back from a fall injury to play some strong defense. Drew's

tight defense also includes tri-captain Andy Chang and junior Bob Lucas. Also switching in there is frosh Bill Mills. At long-stick midfield, the Rangers boast junior Doug McKernan, 6-4 senior Gordon Havlicek, and Mike Levin. Versatile Dave Herman, in his second year, plays long-stick midfielder and wing middie on face-offs. Also at defense is freshman John Cantone. Coach Leanos praised the unit after Wednesday's game, saying, "Everyone tried hard and there was good production out of the entire defensive unit."

Kevin Swank returns in the net. He is backed up by former middie John Gillan, who, Szlasa noted, "did a very positive thing by stepping in at back-up goalie when we needed one." Also minding the pipes this year is freshman John Lucas, still recovering from recent knee surgery.

The Rangers spent their spring break in blustery Maryland. Playing top caliber teams, the Rangers went head to head with squads like Navy's B side, Salisbury's B side, St. Mary's, and Essex Community College. Despite losing all the scrimmages, the coaches felt it was a good experience. "Though it wasn't completely successful, it was necessary in making changes and evaluations," stated Szlasa.

Second year captain Schildwachter summed up the goals of the team by stating, "Our emphasis is to work hard at perfecting the little things so that the big things will take care of themselves." One of the things that the coaches felt was most positive was the fact that so many guys stuck it out through a rough beginning. Hopefully, the weeks of six a.m. practices and running four miles to work out at a snow-free parking lot, plus the spring trip to Maryland, will all have been worthwhile and provide the Men's Lacrosse Team with a very successful year.



Hard work in pre-season practices highlights Lacrosse team's commitment towards a winning season.

Jessica Jaworski