

The Acorn

History Repeats Itself for DRFC



Millie Allen

By Lisa Spitz

HISTORY has repeated itself these past two weeks as the Drew Rugby Football Club faced the problem of field accessibility once again. Two harried weeks of negotiations between the rugby club and the athletic department lead to the eventual intervention by the student Senate, Dean of Students Jane Newman, and Director of Student Activities, Alan Green.

Only yesterday was a compromise reached between Athletic Director Richard Szlasa and the Executive board of the Rugby Club, allowing the team to play its first home game of the season on Drew's Young Field.

The conflict of the rugby club's using "varsity" fields first arose over a year and a half ago, when the program Evaluation Committee recommended that clubs be transferred to the auspice of the athletic department. The team was presented a "seven point plan" required for them to play on campus, transferring of club funds to the Athletic Director, and the loss of all field use in the spring.

According to a letter by former Dean Robert Ackerman, the plan did not permit much room for negotiation. At the time, Ackerman said, "It's not good administrative procedure to hand over the control, make him (the Athletic Director) responsible, without giving him the means to be responsible." At that point, the rugby team began looking at other options, which included renting an off-campus field.

Despite conflicts last year, the rugby team was granted a field for their first game last fall.

At that time, control of the club funds was still in dispute and Robert Carr, last year's captain, told Szlasa that the club could not accept Dean Ackerman's plan saying, "It is against club principles and what we believe to be a Liberal Arts College philosophy." Szlasa and club officers then reconvened to work out a final agreement whereby the team could practice on Tilgman field (in front of Tilgman House) and would play their home games on the "new field" in front of Mead Hall, by the stone wall.

The rugby team proceeded to use this field during the fall semester though, due to an abundance of rain, a seepage of sewage, caused by ground problems, and several well-cleated feet, the field was ruined before spring semester. The rugby club, having been told that there were no fields available during the spring, played all their home games off-campus, in Madison.

This semester, Tripper Mestanas, President of DRFC for 1984-85, approached Szlasa with a request to use Young Field for the rugby team's first home game, on Saturday, September 22. The rugby team considered making this request due to the fact that there were no varsity or intramural games scheduled for that day. Szlasa refused their request for several reasons, stressing that the fields were highly overused due to the shortage of field space. "High usage is just not practical; we're short two fields no matter how we do it, and we can't stay off them to allow them to recover."

Szlasa's other points included a scheduling problem. "We're scheduling a year ahead of time; we need to leave dates open for rain-date scheduling," he said.

Coach Maureen Horan said that advanced scheduling was done "to insure that we have quality teams." Szlasa felt that it was unfair of the team to come in only two weeks ahead of the

game and ask for a field. He was particularly concerned with the rugby club's lining of the field for boundaries, the necessary moving of the soccer goals, and the potentially hazardous holes in the field's playing area, caused by the rugby goal posts. He said that his concerns for the fields were primarily for their physical well-being.

"It's not rugby, it's not club sports, it's not Dick Szlasa, it's not the athletes; I think it's that we are in a transitional period in which we're seeing a growth in individual and team sports," Szlasa stated.

Szlasa also said that he was concerned with the responsibility of the team as a whole. According to Szlasa, when he confronted Carr about stopping an illegal rugby game which was conflicting with an alumni softball game last semester, Carr told him "that he was just one individual on the team; I can't tell them to stop." This according to Szlasa, led him to believe that there is "no one I can look to for leadership on the team."

"I don't think we can hold them accountable if a captain can't tell a team to stop playing an unscheduled game," he said.

Rugby has made repeated efforts to negotiate with Szlasa according to Mestanas. He noted "it's so disheartening for a student to pay so much money to go to school here, and not to have access to its facilities." Similarly, Bill Landis, Co-Captain for 1984-85, stated, "it's hard to explain to new members, like freshmen, that you've paid \$11,000 and you don't have access to the facilities, even when they're not being used. We've made a request to use this field for only three hours--from one to four o'clock."

After repeated attempts at negotiating with Szlasa, the rugby team conferred with Adam Glazer, Student Government Association President, Newman and Green. Mestanas stated, "we've been working on this problem for two years, and in this particular situation we've bended and offered to work with Szlasa, and he has been nothing but discourteous. I made an appointment with him this past Tuesday at 10 am, and then he refused to see me. He brought someone into his office, and closed the door. When we have a problem like this you just can't close the door like that."

Continued on page 3



Peter litton

Cutting the ceremonial ribbon, Linda Blaney, Adam Glazer, Dan Cort, and Ari Levine (l-r) celebrate the opening of the all-new Pub last Saturday, September 15. John Schwalbe (far right), this year's Pub Manager looks on as Drew's establishment begins the year as one of the few on college campuses in New Jersey which have been able to remain open.

News Briefs

New Position Open

Al Green, Director of University Center/ Student Activities, has announced the formation of a new position at the UC. The Night Manager's duties will include aiding the Pub Manager for crowd control, keeping the UC bulletin boards neat and clean, and attending to emergencies in the UC. More information is available at the UC desk.

Campus News Notice

In order to help the news department stay on top of campus wide news, we encourage your participation. If you have an important 'scoop', let us know at the office or through campus mail (Box L-321). And if you're feeling especially energetic, jot your story down and submit it for editing. All is greatly appreciated.

Environmental Summit

The Youth Environmental Society (YES) will sponsor a Collegiate Environmental Summit on Sunday, September 23, from 10:00 a.m. to 3:30 p.m. The Summit, to be held at Stony Brook-Millstone Watershed Association headquarters in Pennington, will bring together campus leaders from throughout New Jersey to discuss current environmental issues including toxic waste disposal, wetlands preservation, and voter registration. All interested students are invited to attend. Further information may be obtained by calling YES at (609) 655-8030. The Summit is free but participants are asked to register by calling the above number.

Campus Parking

Security requests that any student who has a car temporarily on campus remove it as soon as possible. Parking space is once again scarce. Also, 1984 parking stickers expire on October 15th; get your new one now.

Chemistry Colloquium

The Chemistry Colloquium at Drew will hold its second event of the 1984 season on September 24. "A Chemist's View of Flavors" will be the topic of discussion by Dr. Thomas Parment of General Foods Corp., Tarrytown, New York. The talk will be held in Room 202, Hall of Sciences, at 4:15 p.m.

Peace Ministry Welcomes Members

Are you concerned about the threat of a nuclear holocaust? If you are, and have been wondering "but what can I do?" join the Drew Peace Ministry, and other concerned students in their weekly non-violent vigil for peace at Picatinny Arsenal.

Picatinny, located in Rockaway, NJ, is active in the research and development on nuclear, chemical, and biological weapons. If you are interested in joining the group, meets for an information session in Kirby Lounge (basement of Seminary Hall) every Friday at 2:30 pm and then leaves for Picatinny between 3:15 and 3:30. Drivers are sometimes needed. Anyone interested in driving or participating, can reach the group through campus mail L-348. All letters will be answered.

E.O.S. Merit Scholars Announced

The following students have been recognized for their scholastic achievement among Educational Opportunity Scholars by being named to the Scroll of Academic Merit:

Micaela Maria Alvarez
Sherr Lyn Andrews
Antonio Flores
Alex Idavoy
Ana Fatima Oliveira
Carlos Josue Ramos
Edward Walters Rosu
Annette Serrano
Sherry Lee Williams

Research Associateships

The National Research Council announces the 1985 Postdoctoral, Resident, and Cooperative Research Associateship Programs for research in the sciences and engineering to be conducted in behalf of 21 federal agencies or research institutions, whose laboratories are located throughout the United States. Approximately 250 new full-time associateships will be awarded on a competitive basis in 1985. Information on specific research opportunities and federal laboratories, as well as application materials, may be obtained from Associateship Programs, Office of Scientific and Engineering Personnel, JH 608-D3, National Research Council, 2101 Constitution Avenue, N.W., Washington, D.C. 20418, (202) 334-2760.

The Acorn

Editor Lisa Spitz
Managing editor Sean Fulton
News editor Greg Crawford
Sports editor Mike Pavlick
Entertainment editor Susan Brown
Photography editor Peter Schnatz
Business manager Andy Mayers
Copy editor Sandra Miller
Office manager Anna-Beth Winograd
Advisor William Craven

Printing policy

Criteria and priorities used in the printing of material submitted to the *Acorn* in an unsolicited fashion by members of the Drew community.

Editorial Policy

The *Acorn* welcomes unsolicited letters to the editor which are relevant to issues of concern to Drew students. Letters should be less than 200 words, typed double spaced, and sent to the *Acorn* via campus mail. Deadline for the same week publication is Tuesday by 4:00 p.m. All letters must be signed and addressed. Names will be withheld upon request. The *Acorn* reserves the right to edit for length and propriety.

News Releases

Unsolicited articles dealing with club, group, or organizational activities will be treated as news releases. The deadline for these releases is Friday for the publication the following week. Releases should be typed double spaced and should be sent to the *Acorn* via campus mail. The *Acorn* reserves the right to edit or rewrite all news releases.

Printing

Final printing decisions will be made by the editors of the *Acorn*. These decisions are made in regard to space available after assigned staff stories and paid advertisements have been placed in the paper. The editors will then give consideration to the most timely and relevant releases and letters to the editors.

Campus Ads

Non-profit campus organizations ads of 1/16 page or less are free if submitted by noon Monday for the same week publication. After this time the full outside rate will be charged. Ads larger than 1/16 of a page are 1/2 the outside rate if submitted by noon Monday. Campus ads run consecutively will receive lower priority than those not yet run. Paid ads receive priority over free ads.

All material submitted becomes the property of the *Acorn*.

NOTICE:

Due to the legalities of publishing, the *Acorn* cannot publish letters which are unsigned. Names, however, may be withheld from publication if so desired.

If you have recently submitted a letter to the editor, please be sure you have a signed copy for our files. All such letters are confidential.

Please submit such materials to the *Acorn* through CM Box L-321.

The Drew Review

A new magazine consisting of Faculty & Student opinion. Anyone interested in writing an article should talk to Jon Ward or send questions to Box #1825

ECAB Questions Closed Meeting Policy

By Kassie Hayes

SHOULD the Extra Classroom Activities Board (ECAB), hold open or closed meetings? Do open meetings inhibit the board members' voting? Are closed meetings unfair to the University students? These questions were part of a major discussion among ECAB members at their first meeting of the semester, held on September 11th.

Opinions concerning the ECAB members' voting process varied. Adam Kurtz, Ex-Officio UC Board Liaison, stated that he and other ECAB members "reserve the right to protect ourselves" with a closed voting system.

Sean Fulton, Sports Sub-Board Chairperson, opposed this view, stating, "There is no provision for closed meetings. There is an obligation to let them (students) know what is going on."

Further elaborating on Fulton's point was John Ward, Communications Board Chairperson. According to Ward, "We are basically representing the students overall. We administer the student activity money - it's everybody's \$100 and they have a right to know where it's going."

Board member and University Senator Brian

Willner stated that although he also "would like to protect anonymity," he could see where "everybody has to play by the rules."

ECAB Faculty Advisor Richard Kilker told the board members that proceedings in the past have involved proposal presentations, by club representatives, which were followed by the board's verbal voting on an open or closed basis. He said that it was basically a "case-by-case system."

The final resolution of the ECAB members was to allow the current voting procedures to remain intact. Thus, both students and club representatives will still be afforded the opportunity to hear voting procedures as they have in the past. Also, the board will still have the power to vote on whether board discussions and final votes will be held in an open or closed fashion.

Other matters covered at the meeting included the ECAB Fund Allocations Report.

The board's funding stems from the combined total of the Student Activities Fees - \$137,168. From this amount, the ECAB has allocated \$5000 to the Pub for a two-semester period. The board has also approved the allocation of \$1140 to the Women's Soccer Club which, because of its club status, is not covered by Athletic Department

funds.

Al Green, ECAB Student Life Representative, also acquired from the ECAB a sum of \$1250 for a weekend leadership retreat. This program is designed "to foster better communications between existing CLA clubs." The retreat, which is being offered for the first time, will be held in Warwick, New York this weekend.

Turned down at the meeting was a request for \$350 by Hyera for a Black Alumni Reunion Weekend to be held in October. A \$250 portion of the request amount was a \$5 subsidization ticket fee proposal for fifty students. The remaining \$100 was a sum that Hyera claimed would match a fund raising rally to be held on the same weekend. Both requests were denied because Hyera received 97% of last year's budget while other clubs received as low as 85% of last year's budget. The requested \$350 was to be an addition to the club's previously allocated budget.

Commenting on the decision was Hyera President Ursula McGee, "I was disappointed but I have faith in the board and respect their decision. I would like to see more support and interaction from the students and administration for this and other events."

DRFC Gets Field for First Game

Continued from page 1

Tuesday night, at an SGA meeting in which both the rugby club and Szlaza were present, Glazer attempted to reconcile the two sides in a sort of compromise. He made note of Cucchi's request to keep discussion limited to tomorrow's game, and not entertain a list of past grievances.

Obvious differences were seen when Szlaza stated that the issue came down to the fact that "we have to discuss what our goals for the future are." He was cut off by Lunin who exclaimed, "but we're here to discuss our goals for Saturday."

Confronting the physical barriers of using the field, the rugby club was more than eager to accommodate any of Szlaza's requests. Landis explained that the team could line the field with chalk and then wash it down, or that they would merely put down cones as markers and use the existing soccer lines for play, in spite of the smaller size of the field. The only change would be four three and one-half inch holes left by the goal posts. "As far as the actual changing of the playing surface goes, there would be nothing except those four holes and we feel those holes can be filled adequately," Landis said.

Szlaza said he had a "real problem" with anyone other than the plant office moving and setting up equipment on the field. Lunin quickly suggested to Szlaza that the team could use the existing soccer nets for goals, planning to "clamp 2 X 4's for uprights and not even move the nets." Szlaza replied that he still had "a problem dealing on Tuesday with an event that is planned for Saturday."

Szlaza also noted that the field needed to be in useable condition for Sunday since it was being rented to a Madison recreational group during the afternoon. Student senators Carolyn Solitare and Stephen Foster were quick to comment on this contradiction in terms.

"This gentleman (Szlaza) said the fields are overused, yet they are scheduling off-campus groups before Drew clubs," Foster noted, "this is obviously a travesty. What is the rationale?"

With tempers rising, Glazer repeated the fact that discussion should be restricted towards working on a compromise for Saturday's game. Questions became repetitive, as each side became more and more frustrated. Szlaza closed the discussion saying that he "still could not make a decision right at this time."

Directly following the student Senate meeting, Newman, Green, and Szlaza discussed the issue and, in the process, drew up a contract of a "fair compromise for the two groups, which was presented to the rugby team the following day.

Both Glazer and Mestanas were outraged with the fact that there was no student input in the contract. "How can you call that a compromise," said Glazer, "when only one side has drawn up the contract?" Similarly, Mestanas reflected the

feelings of the rugby club, saying that "the thing that bothered us was that it was presented to us; we had no input on this."

The rugby team refused to sign an initial draft of the contract, which included a clause which stated that any infractions of the regulations imposed by the agreement would result in a loss of ECAB funding for rugby. The club also rejected a recommendation that Szlaza sit on a board consisting of Cucchi, Green, Newman, and a student to be appointed by the SGA that would decide penalties for the infractions. According to Glazer, it would be ridiculous to appoint to such a committee the one individual who was just waiting for a violation, so that the club would lose ECAB

status.

After consultation with Cucchi, whom Mestanas called "extremely helpful to the club," and Szlaza, the team finally reached an agreement permitting them to use the field for Saturday's game. The agreement is similar to the earlier version which rugby had rejected, yet states that violations could result in a loss of ECAB funds, and that Szlaza would not be appointed to the violations board.

The game will be played on the J.V. soccer field at 1:00pm. The rugby has invited everyone to attend, but asks that spectators leave all alcoholic beverages off the fields.

Drew Welcomes Center Director

AMONG the many new faces on campus reflecting worry about roommates, classes, and exams, there is one face which appears calm and unconfused - that of the new Counseling Center Director, Dr. Suzanne Dowling.

Dowling, with over a decade of experience in college counseling, has formulated several ideas for projects which she hopes will "help support and promote a healthy environment" at Drew. She plans to hold several workshops dealing with topics such as bereavement support, personal growth, and communication between couples.

Personal counseling, out-reach and development growth workshops are Dowling's primary focus. She says she is very interested in getting involved with student and faculty groups as well. After attending a recent faculty meeting, Dowling noted that the Drew faculty are "very concerned about the students here." She added that she was also "impressed with their enthusiasm."

Dr. Dowling has also met with students, saying that she was "impressed with their caring, concern, and friendliness."

Before coming to Drew, Dowling received her Ph.D. in Counseling Psychology from SUNY-Albany where she also worked as an intern. Upon leaving SUNY-Albany, Dowling worked as a



counselor for Ocean County College.

Dr. Dowling is looking forward to this semester at Drew and to working with her "creative and talented staff," comprised of Dr. G. Jennings, M. Terrafranca, and T. McLaughlin.

The Drew University Counseling Center, located on the second floor of Sycamore Cottage, is open 9 a.m. to 5 p.m., Monday through Friday. Services are free and confidential.

Congratulations!

Mary Lena Morgan on giving birth to a 7lbs., 13oz. bouncing baby boy.

Chief Comments on Computer Security

By George Mitchell

COMPUTER security has become a major concern among students, faculty members and security this semester, due to the large number of personal computers on campus this fall.

According to Chief of campus security, Manny Ayers, there has been a heavier work load for his officers who have to maintain computer security. "Drew has become a very big market for stolen computers," Ayers said. Students and faculty must work together to protect the Drew community from computer theft.

In addition to the regular security force, Drew has acquired two crime prevention officers whose main responsibility is to insure the security of computer equipped rooms. The officers are also responsible for filing a report on each room

New ID's Suggest Check System

By Greg Crawford

THE Computer Initiative brings with it not only an abundance of personal computers around campus but also a new multi-function computer system which among other things, will revolutionize the University's present card systems.

A new, four year, all-purpose, picture ID has been distributed to every Drew student. Each card will serve as a Vali-Dine card, library card, identification card, and age checking card for admittance into the alcohol serving section of the Pub and other social events.

In the future, the function of the card will become even more dynamic. For example, students will no longer have to wait for hours to register only to reach the first station and discover that they're not cleared with the business office. Soon a computer station at the bottom of the stairs in Mead Hall will use the cards to reveal whether or not each student's account is clear.

Another potential use for the computer would be in the bookstore where the card would make sure that a student who is cashing a check has not recently bounced a check or has an account which is not clear.

Perhaps one of the most useful plans being developed for the ID card is a revised meal program. At some time in the future, the meal plan may be based on a debit system in which a student only pays for what he or she eats. The meal will be rung up at the end of the counter and the amount will be automatically deducted from the student's balance recorded on the card.

Campus wide elections offer still another possible function for the card. By automatically checking off every student's ID number as he or she prepares to vote, the card will help save time and eliminate possible errors such as double voting.

There will also be a card-access system for Welch and Holloway. This system will better insure the safety of the residents in those dorms. In addition a replacement card costs 25 dollars. Technology does have its price!

Tutors Needed

In all Academic areas.
If you are interested,
stop by Sycamore Cottage
or call ext. 392/398.



Peter Schnatz

which has computer facilities, noting any damages.

Chief Ayers said that there are several basic security measures which students can follow to prevent computer theft. "If you live on the ground floor, lock all windows and even if you leave your room for five minutes, lock it," he said.

Students can also take other steps to insure computer safety. First of all, students should record the serial numbers of each piece of equipment in addition to purchasing insurance for the computers. Students can prevent possible loss by investing in an inexpensive insurance policy, explained the Chief.

Presently, there is an officer on campus who is engraving IACP numbers on the back side of computers. Engraving computers is an excellent security measure, as a stolen computer could be easily traced back to Drew through the IACP number.

According to Ayers, if a "computer is missing, notify security immediately and don't go looking around buildings." The sooner an incident is reported, the greater the chance of apprehending the suspect, he said.

Furthermore, Ayers vehemently encouraged students to report any strangers in the dorms to security at extension 379. An officer will immediately be sent to the location.

WORK FOR THE FASTEST GROWING AIRLINE IN THE INDUSTRY.

PEOPLExpress is coming to campus in search of RESERVATIONS SALES ASSOCIATES

SOPHOMORES...JUNIORS... SENIORS...GRAD STUDENTS

START NOW AS A RESERVATIONS SALES ASSOCIATE. You'll be the first point of contact between PEOPLExpress and our customers, providing accurate scheduling and price information—and selling seats for PEOPLExpress flights. You'll be based at NEWARK INTERNATIONAL AIRPORT and you will have a flexible work schedule that fits in with your classes.

THE JOB OFFERS ALL THIS:

- \$5.00 an hour to start—with regularly scheduled raises
- UNLIMITED TRAVEL PRIVILEGES ON PEOPLExpress (Not only for you but spouses, too, after 30 days of employment)
- FREE PARKING AT THE AIRPORT
- THE MINIMUM AND MAXIMUM HOURS YOU MAY WORK ARE:
 - Minimum of 4 hours per day
 - Minimum of 20 hours per week
 - Maximum of 40 hours per week

TO QUALIFY you must have a GPA of 2.5 or better, be currently enrolled, be articulate—and have a mature attitude and business-like appearance. Previous work experience is a must.

Presentations/Interviews will be held on Monday September 24th from 10 a.m. to 12 noon and 1 p.m. to 3 p.m. in U.C. room 107. Please bring a current transcript to the interview. For further information see your career placement office.

Equal Opportunity Employer M/F

PEOPLExpress
FLY SMART



Canada's Bear of Beers is here!

Down from the North Woods of Canada comes Grizzly Beer. Not just another Canadian beer, but a rare breed of brew. An authentic Canadian lager—naturally aged, so it's remarkably smooth. With a flavor no other Canadian beer can stand up to. The bear of beers is here!



CANADA'S BEAR OF BEERS
Imported by Van Munching & Co., Inc., New York, N.Y.

The Acorn

A weekly newspublication presented as a service for the Drew University community by the students of the College of Liberal Arts.

Where The Money Goes

LAST spring we ran an editorial expressing our concern over student representatives meeting in closed or "executive" session. Much to our distress, we have since seen few changes in the policies and practices of these governing boards.

Apathy was common last semester, and again, you may just not care. But this is an issue that affects all of us, and there is reason for every member of the College of Liberal Arts to be concerned. We all pay the same \$100 activities fee, we all elect representatives whom we hope will act in our best interests, and we all have a right to know what's going on.

The issue of closed sessions came up again in last week's Extra Classroom Activities Board meeting. There was concern expressed by those Board members who felt they would be inhibited by speaking on a budget request with the applicant present during the discussion. Their argument rested on the fact that as ECAB members, they were in a position to deal with club representatives on a daily basis, and felt that open discussion of a request for funds might offend the club's representative.

Students who have paid their activities fee should not be excluded from any meeting in which funds derived from that fee are discussed. In addition, clubs requesting additional funds must surely realize that the board is acting in the best interests of all students, and that denial or approval of a request is not a reflection of members' opinions of the club or that representative, but really a financial decision.

Any representative who feels that the Board has acted out of personal feelings when considering their request, should reconsider the Board's position as a governing body of the entire college. Furthermore, any Board member who feels inhibited about speaking openly on financial matters before students, should reconsider his or her position on the Board. There is no room for irresolute opinions in any governing body.

The issue of open or closed meetings is not without university opinion. The Drew student handbook clearly states that ECAB meetings are open to all students of the College. Jane Newman, Dean of Students, and Al Green, Director of Student Activities agree, saying that there is no provision for closed meetings in any of the guidelines set forth by the University.

No one who comes before the ECAB should be asked to leave during discussion of an issue. If they wish, Board members should be allowed to have a secret ballot, one in which votes are written down and handed to the Board chairperson.

If the integrity of the ECAB is to remain, and a good relationship between clubs and the board which funds them is to exist, members of that Board must be open in their decisions and discussion.

There is no need for closed meetings on the ECAB. To recall last semester's criticism, this isn't the CIA we're dealing with. It's a Board of students. Perhaps our ECAB should act as such.

What Goes Around Comes Around

It seems as though every time we turn around, some great new injustice has been carried out against the student body by administration.

Perhaps we seem to rebel too much when we try to use that which is ours for a purpose for which it was intended. Perhaps we are impertinent when we question an athletic director who imitates your neighbor's dog with an old soup bone as he sits on his empty fields growling "It's mine and you can't have it."

"Why?" any common sense person might ask.

"Because I said so," the paid, well educated administrator responds.

O.K. We won't even bring up the water polo equipment. We will barely acknowledge that this same department has been party to several attempts to sever club athletics from their ECAB status, hoping to warm them under his ever-indifferent wing. And we wouldn't ever contemplate muddying the waters with discussion of the women's soccer team's grievances. No, we will be quite above-board on this whole issue.

It would seem as though the athletic department has but one concern: the Athletic department.

Last night this same department came to the ECAB requesting that the board give them \$1,400 to help fund the Rose City Classic. The implication was that by using student funds to support the Classic, Drewids would be granted free admittance. Nice idea: take money meant for club use to help fund an Athletic Department attention getter. ECAB took the proper course on that: NO.

Of course, the board could have denied the clubs of funds which are rightfully theirs, and donated them to the Athletic Department's favorite charity. But they didn't, and we're glad. Perhaps our students are beginning to learn something from the administration: a more tactful way of saying "It's mine and you can't have it!"

Letters

Election Hopefuls

My Fellow Sophomores: running for Sophomore class Senator. I think it's very important for us, as a class, to have a strong voice in the Senate and I'd like to be that voice. Good communication between the Senate and the students is crucial, keeping both sides informed of the other's position is my main goal. I have plenty of my own opinions which I will voice but the main input should come from you. Before and after the election, I'd like to hear how you feel about present issues at Drew, such as the computers and those clumsy desks, the new Pub, or what-

ever else is on your mind. Please feel free to talk to me at any time; my door and my mind are always open.

Thank you for your support.
Leola Ross
Welch 223
Box 1451

To the Editor:

I, Jennifer Velez, would like to announce my candidacy for Sophomore Class Senator. I have always held a deep interest in student government and believe that I could contribute greatly as a member of the Student Government

Association. My experience and my interest stems from my past involvement in my high school where I held the offices of Vice-President and President of my student council.

If elected, I will work diligently with Senator Goldstone in all matters

concerning the Class of 1987 as well as the student body as a whole. I would greatly appreciate the support of the Sophomore Class on Election Day, Monday, September 24.

Sincerely,
Jennifer Velez

Dear Class of 1988:

Our class is faced with challenges that have not been faced by previous classes. The effects of the computer initiative and the oppressive drinking laws require bold leadership to protect our rights. As a Freshman senator, I will confront important issues

such as these as they arise.

The unified class is the informed one. As senator, I will send out quarterly newsletters to let you know about important campus issues. This also means that it is imperative for you to keep me informed of issues that you find important. We can only keep our

class unified through communication.

I would appreciate your support on September 24. I want to help our class reach its fullest potential. Together we can work to build a productive Freshman class.

Sincerely Yours,
Susan Buck

Dear Fellow Students:

As I hope you are all aware, class elections are just around the corner and it is important that you all know what is going on. My name is Nina Oligino and I am running for the position of Freshman class senator. Let me say first off that it is very important that everyone goes out and votes. Our class must be-

come involved with campus activities and show that we are an important part of this school. One major part of becoming involved is electing senators who will convey to the school what this class wants and needs. It seems to me that all the upper classes know about the Freshmen is that we all have

Epsos. I want to change that. I want to learn more about student government here, and I want to work for you. So, remember to go out there and become involved, and especially remember to come out and vote.

Nina Oligino
Class of 1988

Student Questions Priorities

To the Editor:

At a recent S.G.A. meeting, the main topic of discussion concerned the use of an athletic field by the Rugby Club. A debate occurred between members of the Rugby Club and the Athletic Department over the department's refusal to allow the Rugby Club to use a field. According to the Athletic Department, the main reasons for this refusal were physical damages to the field caused specifically by the Rugby Club, a general over-use of fields, and improper scheduling of field time. In my opinion, a viable solution was proposed to each of these problems.

I don't play rugby, and probably never will, but I was very discouraged by the fact that the fields are not available to most students. I am a student who pays \$1,000 a year and I feel that I should be entitled to use the facilities. I realize that varsity sports have priority, and I respect that. But what if 20 friends and I want to play football on a Saturday afternoon? Are we to be banned from the fields? If so, why? I remember reading about plans for new fields to be built; what happened to these plans?

Another problem with the use of the fields is where priorities should lie. First priority should be given to the varsity program, intramurals should be next, then clubs; and finally the general student. According to the Athletic Department, however, a Madison Recreation League is on a higher level than students.

The fields belong to Drew and all students pay quite adequately for the use of them. If they are not adequate and available for the entire school, then let's get some new ones. And mayers

Quote of the Week:

"It's a travesty!"

—Steven Foster

Commentary

From The President's Desk: Denying Housing To Homosexuals

WE have nothing to discuss." Who said it to whom? Hazard a guess as to in which of the following contexts the statement was issued:

1) The Pharaoh to Moses right before the sudden deaths of all Egyptian firstborn sons?
2) King George III to a group of Massachusetts Bay colonists a couple of weeks before the famed Boston Tea Party?

3) AT&T executives to the federal government the year before the landmark anti-trust case was put on the court docket?

4) Secretary of the Interior James Watt to a politically powerful environmental group in an election year, relying on the support of a longtime friend, shortly before his resignation was "accepted with regret?"

5) An unforgiving University faculty member responsible for allocation of scarce athletic facilities, after extended argument, to a request by a student club with a colorful history that had knowledge of the facilities' availability on their requested date?

Could you guess? Right. All five times. But the Pharaoh was at least protecting the economic interests of his country when he shunned Charlton Heston. Whose interests was Drew's Physical Education Department Chairman protecting when he originally denied usage of a vacant athletic field to the Drew Rugby Football Club?

More than that, how can the chair of an academic department at a progressive liberal arts institution in 1984 refuse to listen to students, even if it's for the umpteenth time, when they want to discuss an important issue? And how can the institution permit this closed-door and closed-minded policy?

Now for the record, the Student Senate was able to bring the rugby club together with Phys Ed Chair Dick Szlasa to air their differences, and was pleased to provide the forum for the overdue discussion. The Senate recognizes that Coach Szlasa was, unintentionally, made to feel uncomfortable at last Tuesday's meeting, and that it probably would have been fairly difficult to hammer out a solid agreement while he felt "put on the spot." At the same time, the Senate cannot be satisfied with the fact that Coach Szlasa came to terms only after the public S.G.A. meeting, and in a private meeting with Student Life administration.

Safely away from students, the fields allocator was able to see his way clear to approving the only request he had received for an empty field, but not unconditionally. Rugby first had to agree to a contract drawn up for them to sign, but without them or any other student present. Stipulations were provided for everything from the state of their footwear to the placement of their goalposts, and self-contained were some sharpened teeth ready to enforce the contract. In a clause since modified,

Szlasa had demanded that the club's ECAB recognition be automatically removed administratively for the slightest violation of any of the exhaustive terms. That requirement seemed something akin to closing the Pub on a Saturday night and returning all its kegs because one was scratched.

Fan of the rugby club or not, this is an issue that affects all students. Following an admittedly unlikely chronology of events, the student rugby club was denied access to available facilities built expressly for student athletics. The larger question then is if the Athletic Department had successfully denied the ruggers a field this time, who is to say the housing office couldn't deny available rooms to homosexuals? Why couldn't the English Department refuse to admit a male chauvinist into an unfilled course in feminist literature? Or what would stop the University Senate from revoking the membership of a student body president who writes unflattering articles about Drew for its student newspaper? And to take any of these steps without comprehensive discussion and consultation — impossible, right?

If not for that Student Senate meeting and some necessary intervention by Al Green, Jane Newman, and especially Paolo Cucchi, rugby might have been faced with a situation that would have seemed to them just as unbelievable as any of the hypotheticals above seem to other members of the Drew community. Overly dramatic? Perhaps. But it was close.

Student Trainer Objects to "Preferential Policies"

By Kat Hendrix

As a student trainer in the Drew University training room, I have learned a great deal about the administrative and practical aspects of a college athletic department. Recently, I had the unfortunate experience of witnessing an event which showed ignorance, hypocrisy, and favoritism on the part of the head policy makers of the Drew Athletic Department.

For several years, the policy of the department has been to provide training room facilities for varsity and junior varsity athletes only. This excludes club sports on the grounds that the expense would be too great and the clubs would distract the trainers' attention from the varsity and junior varsity athletes. Despite the fact that all students pay the same amount of money for use of the school facilities, Drewids have tolerated this preferential policy.

This tolerance not only reflects student apathy, but also neglect on the part of the Athletic Department which ignores the vulnerability of club athletes. After all, club athletes are just as susceptible to injury as the varsity and junior

varsity athletes; maybe even more so since clubs are not entitled to the preventive care and field side attention that a trainer provides. This is especially true in the case of the Drew Rugby Football Club (D.R.F.C.); the sport is played without pads and affords more rough, physical contact than even lacrosse, the highest men's injury sport at Drew. Despite these facts which deny the fairness of the preferential policy—the policy exists.

In the past, the policy was accepted because it was enforced unilaterally denying all clubs, from dance to rugby, access to the training facilities. Recently, however, an exception to this hard and fast rule was made. The exception is that the Women's Soccer Club (which is presently only probationary status) has been allowed training room attention in the form of advice, ice coolers, and a training kit containing tape, splints, gauze, and pro-wrap. Moreover, they have also been given the privileged use of Drew's athletic fields.

Athletic Director, Richard Slaza, justifies this favoritism by his intention to make Women's Soccer a varsity sport if at the end of the year, their

performance warrants the honor. This pacifying rationale need not be tolerated.

I am not opposed to the Women's Soccer Club; on the contrary, I am glad that they have these much needed facilities and hope that they will press for equal treatment for other club sports. This exception to departmental policy should be used as a spring board by all club sports members to change this ridiculous policy. After all, if the Women's Soccer Club has tape, the Dance Club should have it also. And if the Women's Soccer Club has access to fields, so should the Rugby Club. There is not a shortage of fields at Drew (on Sundays, the Athletic Department rents them to the Madison Recreation Department). So why are club sports, especially rugby, denied use of facilities?

Favoritism is the only answer. We are all students here; we all pay for the facilities; and they are our fields and our training facilities. Slaza has to realize that there's no room for such personal feelings in an administrative job. So I urge all students to voice their needs to him and settle for nothing less than reasonable, remedial action.

The Noble Experiment: Another Rainy Day

Last week we toasted our missed publisher's deadline with champagne and shouts of "never again."

We were sure, it seemed that the newness of production was behind us and we were ready to burn out copy at a blinding speed. Never again, we thought, would we print on Monday that should have been said on Friday.

But we were naive at best. After a week of training sessions with new writers and implementation of hundreds of new production "perks" designed to quicken our output, we still had a fault. I haven't yet figured out where, but in time, I hope we can mend it.

In spite of the fact that this is the last piece of copy to be run, and it's already 7:00am Friday, I have to commend everyone on the staff for a well-fought effort. I have never seen a group of talented people strain so hard to print on a piece of paper that will litter the floor of the commons this very eve.

Our biggest break came when the Athletic Department chose to provide us with a wonderful front page story about rugby, an issue that is not without strong emotions on either side of the fence. We then decided to run a second editorial on the issue, hoping to add an "authoritative" voice to the

already growing cries of dismay.

Copy was quickly written. Where can you find a competent advisor on editorial policy at 4:00am?

Then the words of Bill Craven came to mind. He had reminded me once that we were printing for students, and not administrative favor. "That's just another form of censorship," he said.

So we ran it. Just tuck in your ears and take the slack, we said. We can only do what we think is best.

So this week we did learn something about newspaper: The truth hurts, even when it takes all night to tell it.

ENTERTAINMENT

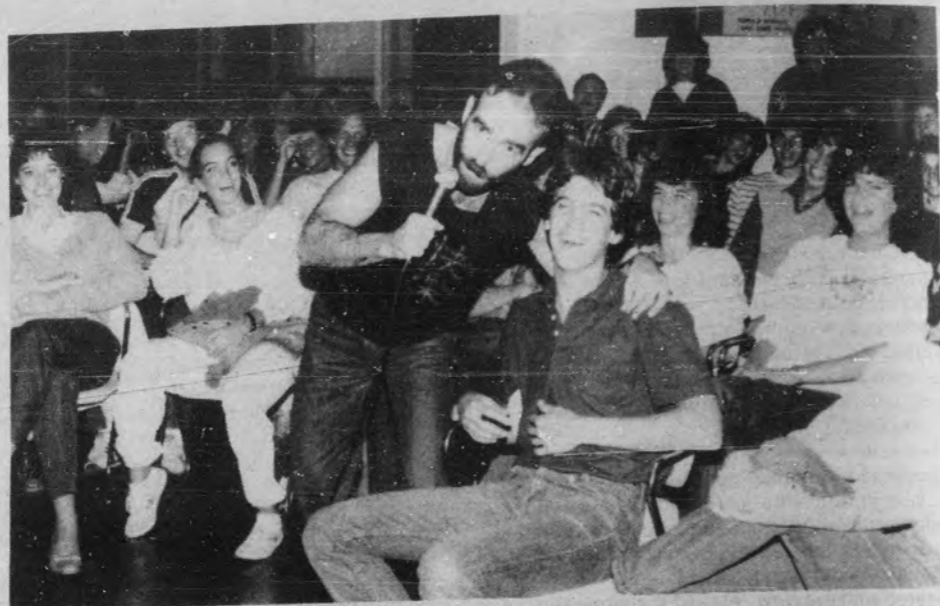
by Susan Brown

ROARINC with laughter at an imitation of cartoon characters at an orgy, as well as other bizarre antics, over 250 students jammed into the Drew University Pub on evening to view this year's first Comedy Night.

Two comedians appeared at this, the first in a series of several free Comedy Nights to be presented by the Social Committee this semester. The crowd overflowed into the University Center as comedians Mike Reynolds and Steve Rizzo captivated the audience in a fast-paced hour and 10-minute show.

Taking the stage first, Mike Reynolds, direct from New York's famous comedy club "Catch a Rising Star", got the ball rolling with his hilarious recollections and imitations of Chinese people making bets at the racetrack. He then proceeded to ponder one of the greatest mysteries facing modern mankind. "You know that Krazy Glue commercial," he asked, "where the construction worker is hanging from a beam by his hand?" I want to know what's keeping the guy stuck to his hand?" But Reynolds really hit home with Drew students, when, observing the conspicuous partitions that separate the alcoholic and non-alcoholic sections of the Pub, he dropped the sarcastic line, "Pretty subtle, huh?"

The laughter continued unabated as Steve Rizzo, who headlines nationally and has an album due for release in the spring, entertained the students with his equally outrageous humor. Rizzo added a personal touch to his act by relying on an old comedic standby: ridiculing members of the front-row audience. He then proceeded to make references to several television series such as "The Adams Family" and "Star Trek" as well



as a well-received imitation of the character Jim of "Taxi". Later in his act, Rizzo produced a guitar and displayed his musical talent by singing his own bizarre version of Bruce Springsteen's hit "Dancing in the Dark". Even more outrageous were Rizzo's imitations of famous cartoon characters in what he termed "real-life" (actually,

compromising) situations.

This lively show is the first of several planned for the upcoming weeks. Featuring two or three comedians nightly, the remaining performances are scheduled for Thursday nights. Don't miss the next installment on Oct. 4, followed only a week later, Oct. 11, by yet another evening of pure, unadulterated entertainment.

Share the experience!
FOR THE FIRST TIME THIS YEAR, THERE WILL BE IN THE PUB

ON
Friday,
September 28TH

FROM
2 to 6 pm

Snacks available
and
Music provided!



Virgin
Drinks

Such As: for .50¢

Pina Colada
Daiquiris Virgin Mary
Aloudini Cocktail
Cardinal Punch

All are welcome

ENTERTAINMENT

Popular Flute Quartet To Perform

FLUTE Force, the winner of last year's prestigious North Jersey Young Artists Competition and the Artists International Young Musicians Competition, will appear in concert Oct. 1 at 8:00 pm in Bowne Theatre. The program is free.

Works to be performed include "Quatuor De Flutes, Op 106" by Florent-Schmitt, Beethoven's "Variations on 'La Ci Daren La Mono'," Vivaldi's "Concerto in C Major for Piccolo," "Serenade for Four Flutes" by Ingolf Dahl, and Scott Joplin's "Ragtime Dance."

Since 1981, Flute Force's four talented members have been performing a unique and diverse repertoire which includes flute quartets, duos, trios, and solos. The group uses a variety of instruments among them the wooden Baroque flute, piccolo, alto flute, bass flute, and the standard silver C flute.

Scheduled to appear at Carnegie Recital Hall next year in their New York debut, Flute Force's members have performed individually throughout the United States. Peter Ader, who holds two degrees from the Manhattan School of Music, has appeared with the New Jersey Symphony and the Houston Grand Opera. He is currently flutist/solo piccolo with the Sante Fe Opera and principal flutist for the New York City Opera National Company.

Deborah Baron, the holder of two degrees from the Juilliard School, has performed with the Metropolitan Opera Orchestra, the Jupiter Symphony, and on Broadway as an orchestra member for Joseph Papp's "Pirates of Penzance." At



Anna-Beth Winograd

present, she is the piccolo player of the Springfield (Mass.) Symphony Orchestra.

Peter Bacchus, a graduate of the State University of New York at Purchase, has performed with the Colonial Symphony, the Bronx Opera Orchestra, and the Ensemble for Early Music. He has collaborated with composer Anthony Newman on several works and recently appeared in Vienna to play for the world tour of "West Side Story."

Rie Schmidt, another State University of New York at Purchase graduate, has performed with the Opera Orchestra of New York, the American Symphony, the Paul Taylor Dance Company Orchestra, and Parnassus. She was a featured flutist and dancer in Leonard Bernstein's "Mass". A 1982 winner of the Artists International Competition, she subsequently debuted in Carnegie Recital Hall.

Fanny and Alexander This Weekend

by Pamela Bloch

THIS weekend's film, *Fanny and Alexander*, was written and directed by the legendary Ingmar Bergman. If you are like me, however, and have never heard of Bergman before seeing this movie, don't worry: *Fanny and Alexander* offers a more than sufficient taste of Bergman's unique style.

Taking place in 1907 Sweden, the film centers on events which change the lives of siblings Alexander (Bertil Guve) and Fanny (Pernilla). In their grandmother's opulent house, life is care-free. Oscar and Emilie Ekdahl (Allan Edwall and Ewa Froling) are ideal parents, helping Fanny and Alexander to experience life.

When Oscar dies, Emilie is courted by a young bishop, Edward Vergerus (Jan Malmgren), whom she eventually marries. Suddenly, the children find themselves transplanted into Vergerus' dark, eerie house, dismal compared to their former home. Vergerus' autocratic rule soon becomes unbearable so the children escape with the help

of an old Jew, Isak Jacob (Erland Josephson).

The first hour of *Fanny and Alexander*, in the happy atmosphere of the grandmother's house, though picturesque, is boring. In the latter part of the film, however, Bergman's talent for the unusual is apparent. In this spooky psychological essay, a child's wish can become reality; the dead Oscar can appear to converse with his mother or Alexander. Sometimes the action gives you the shivers, sometimes it's almost farcical.

Fanny and Alexander was reduced from a five-hour Swedish television series and consequently is occasionally erratic since some scenes have no apparent connection to previous ones. But the actors portray their parts convincingly, so if you can put up with the subtitles (they all speak Swedish) and the length (over three hours) this unique film can be quite an experience.

Fanny and Alexander plays in UC 107, from September 21-23.

Ladies Fashion Come Join Our Team! Loehman's

We are looking for people to work in sales, stock and cashiers. Hours flexible. Full time and part time hours, day and evening, as well as the weekends. We offer a liberal benefit program. Apply in person, Monday-Friday, 10am-5pm. 176 Columbia Turnpike, Florham Park.

Album Reviews

by Jim Brown

Jools Holland meets Rock'A'Boogie Billy
1984 I.R.S.

For the "rock-a-billy" lover this one's a must! Former Squeeze member Jools Holland has combined the "swing-bop" feel of the '50's with today's smoother studio sound to produce a damn good "get down on it" rock-n-roll album. The piano riffs (all performed by Jools) are reminiscent of the hard licks once popularized by Jerry Lee Lewis. The bass line is similar to the "doghouse" (stand-up bass) sound once heard from bands like Huey Smith and the Clowns, Billy Lee Riley and the Little Green Men, and The Carlysles.

The infectious, pulsating bass sound pushes the songs along and gets your feet dancing. Although the 20-minute running time is a bit short, this album is packed with solid rock-n-roll. Whether it's 20 years too late or two years too soon, Jools Holland meets Rock'A'Boogie Billy is a perfect album for the avid rock-n-roll fan.

Junge Roemer

Falco

Falco, of "Der Kommissar" fame, has just released his latest studio effort, entitled *Junge Roemer*. Unlike the above-mentioned dance hit, this album is almost teasingly boring. The listener anxiously awaits the hard, pumping sound pervading his past works. Instead, *Junge Roemer* presents a forced restraint, resembling a jockey pulling back the reins of a fired-up thoroughbred. Falco stung us with "Der Kommissar" and "Auf der Flucht", but fails to deliver the knockout punch on this one.

A better comparison might be with David Bowie circa 1980 minus the Bowie energy. The lyrics, sung primarily in German, make the album difficult to sing along with, thus, forcing the music to stand on its own merit in the United States. Unfortunately, there's just not enough of that captivating synthesized sound to make *Junge Roemer* worthwhile.

ENTERTAINMENT

DUDS Destined for Success

by Gall Lockhart

PLEASED with "the enthusiasm of several members of the freshman class" at the Theater Department's recent open house, Professor Dan LaPenta anticipates a very good year for the Drew University Dramatic Society.

If D.U.D.S. were to have a theme for 1984, it would surely be "Get involved." The department welcomes all newcomers. Any interested person can become active whether by acting, working crew, working box office, or any of the other positions essential to each performance. Already two freshmen, Dan Studney and Jeff Markay, have been cast in leading roles in upcoming Drew plays. Current information about the department is readily available to interested persons through the Theater Newsletter, which is free of charge. All one needs to do is drop a note in CM Box # 1146, or contact the D.U.D.S. Secretary Derek McQueen.

When asked how he felt the computer initiative would affect the department, LaPenta could foresee no adverse effects. He feels that "because Drew is essentially a liberal arts college, incoming freshmen classes will be drawn from a liberal arts pool, as opposed to a mathematical or scientific one, where the people might be less theatrically inclined." Janice Paran, also of the Theatre Department, feels that the computers will prove quite useful within the department. The graphic

abilities of the computers can be put to use in the task of set design while the memory banks can be used to keep track of theatre alumni.

Ideally, LaPenta would like to see the department function as a substantial factor in attracting people to Drew. Already the wheels are in motion to expand its reputation, to establish it as one of the strengths of Drew. An advertisement has been appearing in a high school drama magazine, and numerous letters are being written to high school students pushing D.U.D.S. Both of these methods so far have proved quite fruitful.

This semester seven plays are due to go up, five of which are directed by students, one is written and directed by a student, and one is directed by Dan LaPenta. The schedule is as follows:

Oct. 11-14 *Hanjo* by Yukio Mishima; directed by Julie Demarest
Echoes of a Moth written and directed by Lorrie Decoster

Oct. 25-28 *The Long Christmas Dinner* by Thornton Wilder; directed by Mary Taylor
Minnesota Moon by John Olive; directed by Matt Williams

Nov. 8-14 Two one acts TBA. Directed by Sarah Pfend and Mark Dingley.

Nov. 29-Dec. 2 *Old Times* by Harold Tinker; directed by Dan LaPenta

After the final performance of each show (Sunday night), a post-production discussion will be held.

One of the highlights of this semester is certain to be the presentation of a reading of *The Thirteenth Winter of Louisa May* at Drew on Oct. 2nd. This play, a one-woman show based on Louisa May Alcott's (author of *Little Women*) *Hospital Sketches*, was made possible by the Chairman of the department, Buzz McLaughlin. It was adapted to stage by James Doyle, and produced by Jimmy Wisner, whose most recent production was the extremely successful off-Broadway hit *Scrambled Feet*.

The actress in this production, Stephanie Cotsirilos, created the role of the critic in the Tony award-winning *Nine*. She was most recently seen in the Robin Williams' film *Moscow on the Hudson* as the Marxist professor. This production is scheduled to be produced off-Broadway in the spring of 1985.

The CENTER for Public and Corporate Affairs is accepting applications to become Fellows of the Center

The Center Advisory Board

J. Peter Braun, Township Manager, Randolph Township, N.J.
Stephen F. Byrd, Senior Vice President, Schering-Plough Corporation
Barbara Curran, Commissioner, N.J. Board of Public Utilities
E. Newton Cutler, Jr., Drew University Trustee
Former Chairman of the Board, Horizon Bancorp
James Courter, Republican Congressman, 11th District, N.J.
Jerome D. Greco, President, Board of Chosen Freeholders, County of Essex, Vice President for Government Banking, First National State Bank
Charles C. Lee, Jr., Principal, Contributions Management, Inc.
John K. Lundberg, Chairman and Chief Executive Officer, Crum and Forster
Thomas J. Lyons, Executive Vice President, JC Penney Company
John F. Maypole, Managing Partner, Pouch State Real Estate Holding Company, Georgia
Robert E. Mulcahy, III, Commissioner and Chief Executive Officer, New Jersey Sports and Exposition Authority
Randall L. Tobias, Senior Vice President, AT&T and Company

Faculty Advisory Board
Victor A. Bull, Co-Director of The Center
Julius J. Marino, Co-Director of The Center
Ronald Lee Caplan
George Adelson
James W. Mills
Barbara C. Salmer
Douglas W. Simon

The Center for Public and Corporate Affairs

1984-85

The Center

The Center was authorized by Drew's Board of Trustees in the Spring of 1981. It is an organizational structure designed to provide a select group of Drew undergraduates the opportunity to interact with prestigious and influential leaders from both the public and corporate sectors of the northeastern United States. Throughout the academic year, The Center will sponsor meetings and seminars in which both Fellows and Center Advisory Board members will participate.

One of the great hopes of The Center creators is that the relationships that develop between Advisory Board members and the Fellows will evolve into any one of a variety of enriching on- and off-campus experiences. The Center's expectation is that those students named as Fellows will develop a better understanding of the corporate and public environment through exposure, contact and involvement. In addition, the coming together of corporate and public leaders will strengthen the ties between Drew University and the outside community.



DREW UNIVERSITY
COLLEGE OF LIBERAL ARTS

Applications can be picked up from BC-106. They must be filled out and returned to BC-106 with a resume no later than 4:00 p.m., Friday, September 28. Approximately 20 Fellows will be named on Tuesday October 2. Fellows can be enrolled in any major in the College of Liberal Arts.

The Schedule of activities for this year is being drafted. Tentative plans include a field trip to the JC Penney distribution Center in Connecticut, a dinner and briefing from the municipal officials of Randolph Twp. and a CENTER sponsored colloquium dealing with elections and prospects for the next four years.

ENTERTAINMENT

Fifteen Monumental (and Tiring) Hours

by Dave Rodgers

BETWEEN Thursday, September 13th, and Monday, the 17th, the German Department presented the West German film *Berlin Alexanderplatz*, starring Gunter Lamprecht, and directed by Rainer Werner Fassbinder.

The 15-hour-plus film, based on the novel by Alfred Döblin, followed the life of Franz Biberkopf (Lamprecht, in an incredible performance) from his release from prison through a series of tumultuous relationships and increasing excursions into the seedy underworld of decadent 1928 Berlin. The director used several unorthodox techniques in order to construct a psychological underpinning to the events depicted, and to comment, sometimes wryly, sometimes with apparent sadness, on the tragedy of human existence. Fassbinder's dark vision of humanity did, however, intentionally or unintentionally, lend to the film a attitude toward women that was at best cynical and at worst misogynic, or woman-hating.

The sheer enormity of *Alexanderplatz* makes any attempt to recount the plot a discouraging endeavor. Briefly, Franz, upon his release from prison, visits and sexually assaults the sister of his dead wife (we learn through a flashback that Franz had beaten his wife to death after an argument), and then meets and begins living with a woman named Lena. He sells tie clips, erotica, and briefly, Nazi propaganda in an effort to make a living while adhering to his vow to "stay decent." When he betrays Lena, and a shady acquaintance named Otto betrays him, he goes through a period of intense alcohol abuse and melancholy, emerging only to become involved in a love-swapping arrangement with a man named Reinhold.

Franz' bizarre relationship with Reinhold, one which leads him into the world of crime and costs him his right arm when Reinhold attempts to kill him, is made more provocative by their similar capacities to hurt their lovers. Without his arm, Franz complains bitterly about his helplessness, yet repeatedly visits Reinhold, apparently to psychologically torture the latter. Franz' old flame and guardian angel, Eva (Hanna Shygulla), sets him up with a young prostitute named Mietz, who remains the faithful lover, and servant, of Franz until Reinhold, after a thwarted attempt at seduction, murders her.

Reinhold then goes to prison, and Franz goes insane, whereupon the movie turns into a long, surrealistic series of dream sequences before Franz is released; he is last seen serenely working at a pathetic and meaningless job. The epilogue of the film is avant-garde and difficult to describe, but it does form an inventory of the characters, as well as of some of the themes which had been presented or suggested in the course of the film.

Although I was fascinated, repelled, and sometimes moved by the story which unfolded over the first four nights, I can't help but feel that the epilogue, for all of its arty symbolism and chaotic violence, detracted from what emotional power the film might have ultimately yielded. References to homosexuality, the Third Reich, and the likening of humans to birds and sheep (passively caged and slaughtered) lost all of the subtlety with which they had been presented in the film proper. Hell imagery, biblical burlesque and orgiastic cruelty were mixed into an eclectic cinematic stew, and the result was more than a little

disturbing--probably Fassbinder intended result. If *Berlin Alexanderplatz* didn't seem to me quite the masterpiece that it has been hailed as by New York critics, it did provide an incredible stimulus for debate, especially over the frequent depiction of women subjected to violence and humiliation.

An anonymous essay, circulated in the Learning Center during Monday's showing, tore into the film for its consistent portrayal of women as mindless, slavish victims. Whether Fassbinder was indulging a personal obsession or merely extending his obviously morbid attitude to comment bitterly on the dark psychological aspects of human sexuality, his decision to portray women in this manner insures that this film will be embroiled in similar controversies to those that have been raised over Stanley Kubrick's *A Clockwork Orange* and Brian DePalma's *Dressed to Kill*.

Auditions:

For film to be presented in
October

Sept. 23- 2pm.- 5pm.

Sept. 24 7pm.- 10pm.

In Brother's College

Chapel

All Welcome

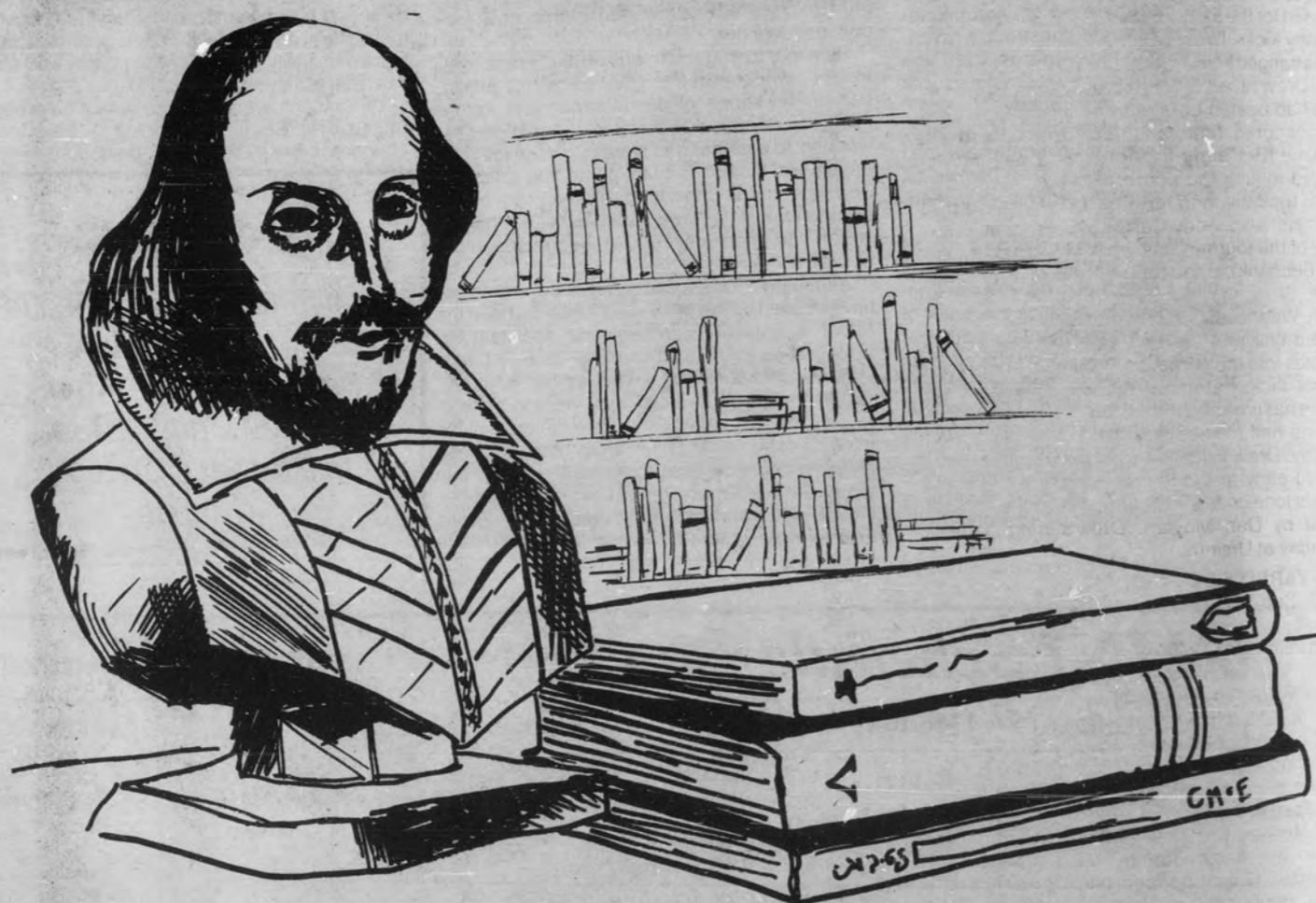
WMNJ Schedule

A.O.R.-Album Oriented Rock

	Sunday	Monday	Tuesday	Wednesday	Thursday	Friday	Saturday
6am-9am	Jean Mowles (classical)	Robert Murdoch (A.O.R.)	M. Nicolai & E. Lynch (A.O.R.)	Mick Pidgeon (A.O.R.)	Jim Lyons (A.O.R.)	Karen Hunter (A.O.R.)	Scott Wands (Jazz)
9am-12 noon	Sam Hostettler (classical)	Stu Anderson (A.O.R.)	Peter Burchett (A.O.R.)	T.B.A.	Anna Lisowski (A.O.R.)	Lorrie Decoster (A.O.R.)	Richard Poach (Jazz)
12-3pm	Bob Oliverio (classical)	Len Mitchell (A.O.R.)	Mike Ward (A.O.R.)	Schwartzott & Richardson (A.O.R.)	Ken Rich (A.O.R.)	Jess Davis (A.O.R.)	Stu Hollingshead (Jazz)
3pm-6pm	McKernan & Gagliano (A.O.R.)	Mike Dagastino (A.O.R.)	Nancy Goolsby (A.O.R.)	Tom Wright (A.O.R.)	Marc Green (A.O.R.)	Webb & Goldstone (A.O.R.)	Steve Rogers (Country)
6pm-9pm	Bruce Astrachan (A.O.R.)	Amy Rosta (A.O.R.)	Jim Brown (A.O.R.)	Mickey Randazzo (A.O.R.)	Dave Palmer (A.O.R.)	J.P. Jones (A.O.R.)	Gary Powell (Dance)
9pm-12 midnite	Special Programming	Bob Bystrowski (progressive)	Melissa Kennedy (progressive)	Curt Ryan (progressive)	Ted Bowes (progressive)	Dave Dolan (progressive)	Dan Chiarillo (A.O.R.)
12-2am	Wend & Stiller (A.O.R.)	Gallagher & Higinbotham (A.O.R.)	P. Nigro & Gittleman (A.O.R.)	Lisa Spitz (A.O.R.)	Anna-Beth Winograd (A.O.R.)	Jon Thompson (A.O.R.)	Chris Gallinari (A.O.R.)

Drew University Bookstore

Now open 7 days a week



Books-R-Us

Also:

Telephones Computer supplies

Yes, Cigarettes are still \$1.00

SPORTS

Sports Update

by Mike Pavlick

VARSITY SOCCER

AFTER a come from behind shootout victory over Monmouth College in the first round of the Drew Fall Festival, the Men's Varsity Soccer Team has lost its last three matches, thus dropping their record to 0-3-1.

Against Monmouth, Drew fell behind twice, but equalized each time behind goals by Andy Carroll (assisted by Tom Mulligan) and Dan Moylan (assisted by Rob Falvo). Moylan's goal came with just 19 seconds left in regulation. The overtime periods were scoreless, and since a winner was needed for the Festival final, the tie was broken by penalty kicks. Drew won the PK round, as Rocco Iossa banged home the clincher. In the tournament final Drew faced George Washington University, who had beaten Lafayette 4-0 in the first round. GWU scored first, and took a 1-0 lead into halftime. But early in the second half, Moylan scored to knot the score. However, GWU once again took the lead, and held on for the festival championship. Andy Carroll was voted defensive MVP of the tournament, while Moylan and goalie Rob Bednarik earned berths on the all-tournament team.

On Wednesday, September 12, the Rangers hosted William Paterson. Drew scored just five minutes into the game, as Rob Falvo scored off a corner kick. Paterson, though, countered just before halftime and then scored twice more in the second half to record a 3-1 victory. This Wednesday, Drew travelled to Haverford. Haverford scored early and often, eventually winning 5-1. Drew's lone goal was scored by Rob Falvo off an assist by Dan Moylan. Drew's next game is Saturday at Ursinus.

SUB-VARSITY SOCCER

The Sub-Varsity soccer season began this Saturday, in the rain, as the Rangers took on County College of Morris. Drew scored first off a penalty kick by Chris Brady. Shortly thereafter, Mike Pavlick, on an assist by Peter Litton, put Drew up, 2-0. Midway through the second half, CCM scored on a breakaway to make things interesting. But the Rangers iced the game in the last ten minutes on goals by Brady and Greg Robertson to score a 4-1 triumph.

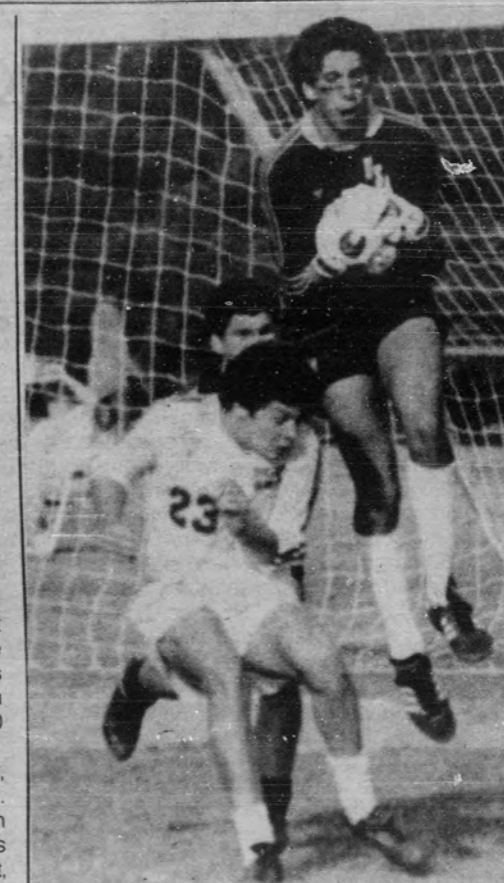
On Monday Drew made the trip to Lafayette, only to get hammered by the Leopards, 6-0. Yesterday, Drew bounced back to earn a hard fought draw against William Paterson. Drew opened the scoring with a second half goal by Stewart Hollingshead, but Paterson countered just 22 seconds later to tie things up. The score remained 1-1 at the end of regulation, so the two teams went into overtime. Neither Drew nor Paterson could muster a goal, and the final score remained 1-1. Drew's next game is Thursday, at Kean College.

FIELD HOCKEY

The Drew Women's Field Hockey Team started their season off with a bang as they easily captured the Field Hockey portion of the Drew Fall Festival, outscoring their opponents 5-0. In the first round, Drew pounded Marywood, 3-0, and then beat Johns Hopkins, 2-0, to take the title. A strong defense and a balanced scoring attack highlighted the Ranger effort. Doing the scoring for the women were Cheryl McDonald, Sally-Jo Placa, Lori Quinn, Mary Ellen Vieira, and Kim Whynot, each with one goal apiece. Bonnie Etheridge added two assists, and Judy Cavalli also had an assist.

Last Wednesday, the Ranger women travelled to Trenton St., the defending Division III National Champions. Drew scored first, just ten minutes into the game, on an unassisted goal by Lori Quinn, but Trenton St. tied it up nine minutes later. The second half was scoreless, so the game went into overtime. Trenton scored in the first overtime period, and Drew could not match the goal, thus losing 2-1. Stacie Milhaven had a great game in goal for the Rangers, making 16 saves on 40 shots.

The Rangers rebounded from the loss, though, thoroughly beating Montclair St. last Monday, 3-0. The win was a tribute to Drew's defense, which allowed just one shot the entire game. Drew's defenders include Peggy Sivilli, Colleen Hewlett, Tina Todaro, and Sally Gormley. Drew's goals were scored by Vieira (assisted by McDonald), Cathy Link (assisted by Placa), and Cavalli.



Anna-Beth Winegrad

Help Wanted

Looking to earn extra cash this semester? Become our college Travel Representative. Enthusiasm to travel a must. Excellent business/ marketing majors. Call Bruce at 1-800-431-3124 or 1-914-434-6000 (N.Y. State only.)

1st Annual Intramural

Golf

Tournament

Friday October 12,
Pennbrook Country Club

Faculty, Staff, Graduate,
and Undergraduate
All Are Welcome

6.00 per person

Sign up sheet in Rm. 104,
Baldwin Gym

*Questions see Coach
Brock, ext. 439



Peter Litton

SPORTS

Women's X-Country Builds A New Team

By Marmie Hlester

THE Women's Cross Country team is off to a running start with a new coach, freshman talent, experienced upperclassmen, and an opportunity for a winning season.

The eight women runners were victorious in their first meet of the season, capturing the first seven positions against William Paterson on Friday. Freshwoman Cindy Gantiner earned the first spot, with fellow frosh Molly Conrecode coming in second. Senior Jill Reddon finished in the third spot. Reddon and juniors Robin Aberbach and Terri Akyoshi were members of the 1983 team and bring their expertise and experience to this year's team. In addition to Gantiner and Conrecode, other newcomers include junior Kessie Hayes and frosh Mary Helen Hughes and Lisa DeBenedetto.

The Drew runners and their new coach, Brenda Stuke, are optimistic about the season. Coach Stuke sees depth and strength in the team, which has "good freshmen talent and good experience from upperclassmen." Another asset to the team is the closeness of the runners in performance, with the "lead probably switching quite a bit throughout the season," Stuke said. She also cites possible injuries as being the

biggest liability of the team. If the team can survive the potential setbacks that injuries would bring, and come through the season with a full squad, Stuke hopes that "we can place in the top five teams in the MAC."

Last year's team, under the coaching of Albert Szollosi, had only an average of three runners per race. Although they won one meet, most of the time they had too few runners to supply much competition. The girls are confident about their chance to be top contenders this year, though. Aberbach comments, "This year we have really good runners. We should do well. Drew may surprise the other teams this year." Kessie Hayes agrees: "We really look good as compared to past teams." And, Coach Stuke asserts, "Hopefully, we can turn things around."

New coach Brenda Stuke is a 1981 graduate of the University of Missouri and had qualified for the U.S. Olympic Trials. She enjoys coaching the Drew Women. "The girls have been great. They have a lot of dedication and I give them a lot of credit," she says.

Hopefully, their hours of practice and their dedication will pay off as the Drew women progress into the season and strive for MAC recognition.

Stromboli

10% off with College I.D.!!!

What is a Stromboli?

A stromboli is weaved dough freshly baked around your favorite filling along with cheese, tomato sauce, onion & peppers, with over 20 different fillings.

Choice of fillings include:

salami, capicola, meatballs, chicken, pepperoni, steak, sausage, and more, as well as . . . the freshest of vegetables: eggplant, cauliflower, mushrooms, broccoli, zucchini.

Also: Regular & Sicilian Pizza • Hot & Cold Heros
Calzones • Sausage & Pepper Rolls

Stromboli King & Pizza

143 Main Street, Madison

(Across from Madison Junior School)

Call 377-2753 for prompt pick-up service

Hours: Sunday-Thursday 11-11 • Friday & Saturday 11-12

Need Assistance In A Course?

University sponsored tutors are available.
Come to Sycamore Cottage for an application.

WMNJ

Presents

"For Headphones Only"

Music uniquely designed for headphone listening

Featuring:

Pink Floyd

Thomas Dolby

Kraftwerk

Patti Smith

David Bowie

& Others

Every Sunday 11pm-Mid.
Starting September 23rd
on WMNJ 88.9 FM Stereo

Men's X-Country Wins First Meet

by Scott Wands

WITH a 22-34 victory over William Paterson College, the Drew Men's Cross-Country Team completed its first match September 14th. Finishing first for the Drew team was Ken Vaughn, while Chris Wood captured second. Third, fourth, and fifth places were held by Forrest Shue, George Discher, Leonard Mitchell, respectively.

Cross-Country is a five mile race run across un-paved, open ground, as the name suggests. Athletes train by running approximately 15 miles a day across campus and around town, starting as early as 6:00 a.m. This can add up to as much as 90 miles a week for a runner.

Team coach John Stuke, a graduate student at Drew, is looking forward to a good season for the team this year. "We're coming off a winning season last year," he said, "and some of our runners have improved their time by as much as five minutes." The team's won-loss record last year was 12-3.

The team's co-captains are George Discher and Ed Lynch, both returning sophomores to the team. Other returning members of the team are soph Gavin McGuire, soph Forrest Shue, and seniors Leonard Mitchell and Ken Vaughn. New members of the team include senior Jason Fenton, soph Jim Lerman, and transfer student Chris Wood, who Stuke says is "a strong new runner we'll be expecting a lot from."

The team has its next meet September 22 against Stockton State.

SPORTS

Field Hockey Continues Winning Ways



Anna-Beth Wimmer

by Mary Burke

THE Women's Field Hockey Team is in for a spectacular season again in 1984 as they start off this year with nine new freshmen and seventeen returning players. The new freshmen include goalie Ann Gunter, Laurie Coratore and Lisa Paolini on defense, midfielder players Bonnie Etheridge, Kim Whynt, Jodi Geiser, Sally Gormley and Liz Bungo and forward Ingrid Deklau. Returning players include tri-captains Sally Jo Placa, Judy Cavalli, and Cheryl McDonald along with senior Carolyn Biggs, juniors Tracy Neiger, Mary Ellen Vieira, Cathy Link, Colleen Hewlett, Melissa Gorton, and sophomores Jennifer Kapp, Lynn Mertz, Tina Todaro, Lori Quinn, CeCe Dorrough, Stacie Milhaven, Liz St. John and Peggy Sivilli.

The Rangers, who finished the season last year as the MAC champs and the #3 seed in the National Tournament, will face tougher competition this year, according to Coach Maureen Horan. However, her team seems up to the challenge, as they have already posted three wins against just one loss. The Rangers captured the Drew Invitational tournament with wins against Marywood and Johns Hopkins, and then proceeded to beat Montclair St. The women also played

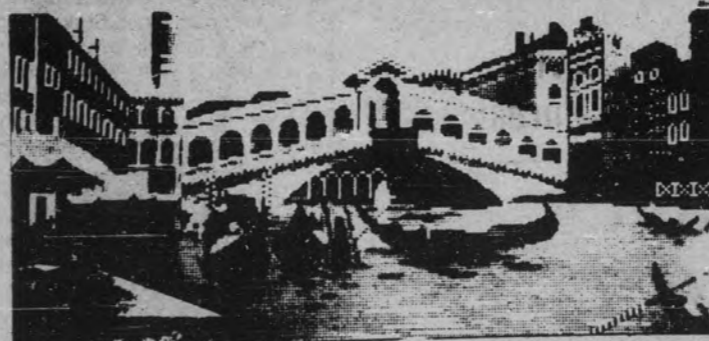
Trenton St., the defending Division III National Champion, to a tie in regulation, but lost 2-1 in overtime. The team will be playing other nationally ranked schools when they travel to Salisbury, MD for a tournament at the end of the month. According to Horan, though, her team's tough defense, which has been working well together, will be one of the keys to the team's anticipated success this year.

The coach is quite pleased with the progress she has seen within her team. She noted that they came back for their week of pre-season before classes began ready to work. "They are a hard-working, dedicated group," Horan also noted that there was a lot of team spirit and "quiet confidence." As has always been her philosophy, Horan will have her team take things "one game at a time" as they strive to defend their MAC championship title and go beyond to the national championship.

Coach Horan and her new assistant, Debbie Schimpf, are very optimistic about the 1984 season and hope that fans will continue to support the Drew Women's Field Hockey team as they climb onward and upward to what is hopefully a very successful season.

ROCCO'S Pizzeria & Restaurant

Since 1960



IT'S DIFFERENT — IT'S DELICIOUS
Bring Your Own Wine & Beer

30 COOK PLAZA
MADISON, NJ

377-7161

LUNCH —
DINNER

Sports Slate

Field Hockey

Sept. 22 Sat at Manhattenville 1:00
Sept. 25 Tu at Muhlenberg 4:00

Varsity Soccer

Sept. 22 Sa at Ursinus 2:00
Sept. 26 W at FDU-Madison 3:30

Sub-Varsity Soccer

Sept 27 Th at Kean 4:00

Men's and Women's X-Country

Sept. 22 Sa at Stockton St.

Support Drew Athletics

SPORTS

Drew Ball Begins Challenging Season

By P.J. Cimini

FACING what Head Coach Vern Mummert calls "the toughest schedule ever," the Drew University Varsity Men's soccer team opened their season on September 8th and 9th in the Drew Fall Festival against Monmouth and George Washington. Coach Mummert, along with assistants Peter Carr, History Department chairman John von der Heide, and J.V. coach Todd Spencer, have coined a phrase to inspire this year's team. "Our saying this year is 'Drew Ball,'" commented the 4th year head coach, "and it means total concentration for 90 minutes or even 110, if needed."

The Rangers, coming off their second best season in soccer history (North MAC Champions and an NCAA berth), were thrown right into the fire as soon as the season started. Their first two games, against Division I Monmouth and George Washington, gave them a taste of what was to come. The Rangers have a schedule that would make the Cosmos cringe. "We have a really tough schedule," Mummert stated at the beginning of the year. "We start off with two Division I teams, and then we go on to play some of the toughest Division III teams in the nation." Scranton, a Final Four squad last year, and SUNY-Stony Brook will provide some of the stiffer Division III competition for the Rangers. Mummert is correct in his assumption of the challenge the team faces. They can't be accused of ducking anyone. Yet, as tough as the season promises to be, there is great anticipation and hope surrounding the '84 booters.

The Rangers return a solid nucleus from last year's #3 seeded team in the NJ-South regional of the NCAA National Tournament. Chock full of class of '87 members, the team begins with most of the players who had an integral role in last year's banner season. Heading the list of returning starters are All-MAC performers Dan Moylan and Rob Bednarik. Moylan, the cat-quick junior tri-captain, was last year's leading scorer and is already starting his net attack with a couple of goals in three games. Soph. Tri-Captain Bednarik brings much needed stability and strength to the crucial position of goalkeeper. The third tri-captain is Tom Marra, a senior defender.

Other players tabbed to start this year include: Tucker Cutler, a junior midfielder; David Brown, a sophomore midfielder; Rich Hauck, Mike Lutz, and Andy Carroll, all sophomore defenders; and soph forwards Rob Falvo and Brian Thoka.

Two new faces on the scene with starting potential are sophomores John Jandrasits and Tom Mulligan. Jandrasits, a JV player last year, and Mulligan, a first year player, have played admirably in key situations this year.

Mummert was quick to point out that among Drew's strengths this year are its reserves. Leading the field is junior midfielder/striker John Dollard. Also helping will be sophs Bill Keough and Bill Rimmer, both coming off summer knee injuries. The goal looks to be as safe as Fort Knox with four solid keepers on the squad. Backing up Bednarik are three sophomores: Gerry Idec, Bill Dolan, and Tom McGuinness, all of whom are capable and experienced keepers.



Peter Iltton

Andy Carroll Jockeys for position.

But there is some new blood being infused into the Ranger attack this year. Gregor Robertson, a transfer from FDU-Teaneck, will be called upon to help out from his forward position. This year also brought a bumper crop of freshmen to the campus. The heralded crew of green recruits is led by Chris Brady, an All-State player from Allendale, NJ.

After opening the year with a heart-stopping win against Monmouth College, the Rangers dropped their next two games, the first to GWU in the Fall Festival Final, and the next to William Paterson. According to Coach Mummert, some weaknesses became apparent in those two losses. "For one, all of our scores have been off set plays," he commented. "We have to establish ourselves as scorers from the field, not just off set plays." Consistency was also one of Mummert's peeves after watching the Rangers go from 1-0 to 1-2. "We're just not finishing off what we start," he

stated. "We have not been playing with any consistency."

Consistency is not the only thing they have been playing without, as they have lost starting striker Rocco Iossa. Iossa broke his leg in the game vs. GWU while sliding for a loose ball and will be out for an indefinite period.

In terms of goals for the season, Coach Mummert was hard-pressed to make any predictions, but he does have some good feelings about the ball club. "First, we'd like to defend our MAC title," Mummert conceded. "And then any kind of post-season honors would be a great topping on the season. But most of all we would like to continue the winning tradition that is here at Drew," he concluded. The winning tradition has already been established by many of the players on the pitch this year. And "Drew Ball" is certainly on the way to a promising and fruitful season if they can continue to improve and develop the way that Coach Mummert hopes they will.

TIME AFTER TIME

CLOTHING FROM THE PAST

Betty Dembo

81 MAIN STREET (201) 966-6877
MADISON, NEW JERSEY 07940

