

Don't
Forget
To
Vote!



DREW ACORN

Splash
Party
Saturday

-- College Newspaper of Drew University --

Vol. 35—No. 17

DREW UNIVERSITY, MADISON, NEW JERSEY

March 26, 1962

Sixteen Vie For Council Offices; Primaries Set For Wednesday

by Judy Ahlstrom

*FIFTEEN JUNIORS and one sophomore have tossed their hats into the ring to contest for seven positions in the 1962 Student Council elections.

The Candidates' Public Forum to answer students questions concerning the candidates will be held Monday, March 26. The primary election will be Wednesday, March 28 and the torchlight parade and pre-election rally will be held Wednesday, April 11, the night before the final elections.

Vying for the position of President are Jack Hawke and Mike Slippen; Vice President, Bill Dickinson and Jeff Gillman; Secretary, Ellen Earp and Bonnie Keyser; Treasurer, Pita Ala'ilima, Bob Fenstermacher, and Ralph Powell; NSA Co-ordinator, Sue Mandel; Female Frosh Advisor, Gail Clayton, Betsy Gecsey, and Gerie Snell; and Male Frosh Advisor, Ward Landrigan, Hal Pederson, and Dick Stafford.

Primaries will be held for the offices of Treasurer, Female Frosh Advisor and Male Frosh Advisors.

Pita Ala'ilima, soph candidate for Treasurer, lists his qualifications as Treasurer of the New Jersey Democrats Student Federation, Chairman of the International Relations Association, ex-Chairman of the Worship Commission of the Student Church, ex-Chairman of the Program Committee of the Drew Young Democrats and a member of the

Hillel and soccer team.

Bob Fenstermacher has been a member of the Class Executive Committee for two years as class treasurer, technical director of WERD working on budgetary problems, past secretary of Haselton Hall, vice president of the American Institute of Physics on Drew Campus, and a member of the Judicial Board and Spring Production.

Ralph Powell is an economics major with courses in accounting and finance, manager of Consolidated Laundries, a member of the Varsity D, the choir and Canterbury Club.

Gail Clayton, candidate for Female Frosh Advisor, has been on the Orientation Committee for two years, co-chairman and Chairman of Fellowship and Worship Commissions of the Student Church, treasurer of Asbury Hall, Vice President of W.A.A., a member of Spring Production, Green Fey, and the Philosophy-Religion Club.

Betsy Gecsey has been on the Orientation Committee, is Junior Class Social Chairman, was Vice President and social chairman of West Wing, was on the Exchange program to Swarthmore and is a member of Green Key and the Cheerleaders.

Gerie Snell is Vice President of Drew-Eds and Green Key, a member of the Judicial Board, has been a member of the Social Committee for three years, is a member of the Acorn and W.A.A.

Ward Landrigan, a contestant for Male Frosh Advisor, is Art Editor of Columns, Vice President of Kappa Pi, social coordinator for Baldwin Hall, a member of Green Key and a Sunday School teacher for four years.

Hal Pederson was captain of

Wolff Performs At Music Recital

*KONRAD WOLFF, PIANIST, and Berl Senofsky, violinist, will give a chamber music recital on Sunday, April 1 in Bowne Auditorium. The recital will begin at 4 p.m.

Senofsky, who was awarded the Queen Elizabeth of Belgium prize in 1955, recently made headlines for his short-notice solo performance with the Pittsburgh Symphony Orchestra. His next New York recital will be April 13 at the Metropolitan Museum of Art where he will appear with the pianist Gary Graffman.

Wolff, who has instructed piano students at Drew for several years, recently appeared in a concert in New York's Town Hall. This will be his last appearance on the Drew stage.

The Drew program will feature a Mozart sonata, the Rondeau Brilliant by Schubert, and Brahms' Second Violin Sonata.

People are still needed to participate in the Student Council work project in East Harlem. The project will take place on Saturday, March 31, from 9 a.m. to 5 p.m. The work will consist of painting in a local apartment. Box lunches will be provided.

To sign up, contact Bob Sarr through campus mail.

Speakers, Films Highlight Religious Emphasis Week

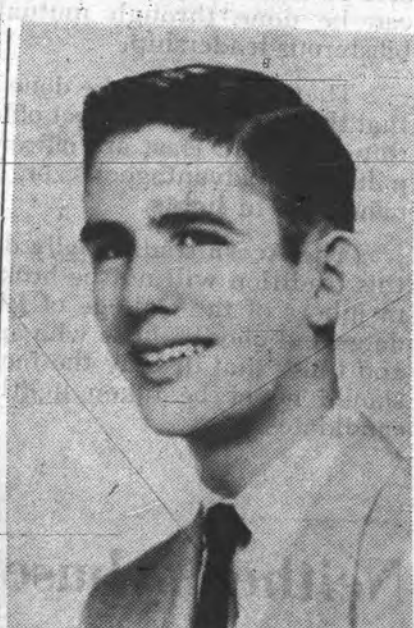
*A VARIETY OF SPEAKERS, two religious dramas, an Ingmar Bergman film, and daily coffee hours highlight the Religious Emphasis Week program headed by Lyn Sausser and Dave Laughlin, co-chairmen. Centering on the theme "The Witness—of the Church in the World," the week began Sunday morning, March 25, with a Choral Communion Service and Chaplain Pain preaching on "The Witness of Witness."

In Tuesday chapel service at 10:45 a.m., Chaplain Pain continues this theme by speaking on "The Witness of Witness."

Wednesday at 6:30 p.m., the Canterbury Club will sponsor a dinner at Grace Episcopal Church, open to all students who have made reservations with Pat Gee or John Klapmuts.

Following the dinner, at 8 p.m. in Bowne Lecture Hall, "A House by the Stable" and "Grab and Grace," two plays by Charles Williams, will be presented.

These two modern morality



LINDA SAUSSER, DAVE McLAUGHLIN
Co-Chairmen for R.E. Week

(Photos by Enslee)

plays by Williams demonstrate his interest in the new dimensions of religious drama. Directed by Nort Wettstein, the cast includes Greta Wachs, Diane Purdy, Rich Matthews, Ship Smith, Wayne Lindberg and Mr. Wettstein.

Rev. James Boyd will speak at a 9:15 a.m. Chapel Service on Thursday. Pastor of the Summit Methodist Church and a voting delegate to the World Methodist Council, Rev. Boyd will preach

on "Listening and Speaking." At 8:30 p.m. Thursday, Rev. Father Jean Meuendorff will speak in the multi-purpose room on "Orthodoxy and Ecumenism." Dr. Meyendorff is a leading Byzantinologist and professor at St. Blademer's Theological Seminary.

The final lecture of the week will be "The Spirit of Ecumenicity," discussed by Msgr. J.M. Oesterreicher on Friday evening at 8 p.m. in Bowne Lecture Hall. Director of the Institute of Judaic-Christian studies at Seton Hall, Msgr. Oesterreicher is well-informed concerning the ecumenical movement.

An Ingmar Bergman film, "Sawdust and Tinsel," is the Saturday night program in Bowne at 8 p.m. Two short films, discussion, and refreshments supplement the program.

In addition to these events, a 4 p.m. coffee hour on Monday, Wednesday, Thursday, and Friday should bring to light the student's concern for "The Witness of Witness." The Common's Room of Sam Bowne Hall will be the setting for these informal discussion groups.

Johnson Tells Details For May Contest

*THE NEW JERSEY INTER-COLLEGIATE Speech Association, of which Drew is a member, will conclude a successful season of forensic activities with an oratorical contest to be held at Bloomfield, College, Bloomfield, New Jersey, on Tuesday, May 1. As chairman of this association, Dr. Ralph R. Johnson is especially eager that Drew be well represented in this contest.

Each student will present an original oration on any subject suitable to the audience and the occasion. The oration should be from eight to ten minutes in length, and must be committed to memory. No notes may be used. The orations will be judged on the basis of the orator, the organization, and the delivery. Each college in the association may enter only one contestant.

A preliminary contest to select a student which will represent Drew must be conducted some time prior to April 20, the time set by Bloomfield for the names of all contestants to be sent in order that they may appear in the program.

Dr. Johnson has set Tuesday, April 10, at 4 p.m. for the preliminary contest in order to choose Drew's representative. Interested students are instructed to watch the bulletin boards for further details.

American Artists Exhibit Works

*AN EXHIBITION OF PAINTINGS by members of the New Jersey Chapter of the American Artists Professional League will be shown in the multi-purpose room at the University Center April 1 through 13. The organization dedicates itself to the traditional forms of art.

Members of the Drw community are cordially invited to view the exhibit which will highlight the works of many noted artists throughout the State. Some of the outstanding events programmed for the opening reception Sunday, April 1, at 2 p.m. are the presentation of a portrait painting of former Governor Robert B. Meyner executed by Miriam Y. Burrill, former president of the New Jersey Chapter and National second-vice-president of the American Artist Professional League, a demonstration in painting by internationally known artist William N. Earle, N. A., and the awarding of prizes for the best works in the exhibition.

WAA Sponsors Splash Party

*THE WOMEN'S ATHLETIC ASSOCIATION will sponsor an inter-class swim meet and splash party on Saturday, March 31, at 2 p.m. All are welcome to participate in the races and games which will be held on a class basis.

The events will be followed by a free swim for spectators and participants. Jackie Jones, who is in charge of arrangements, has announced that prizes will be awarded to winners and encourages all those who are interested to practice at the free swims held every Tuesday and Thursday, 7:30-9:30 p.m. Further plans will be announced.

A. A. U. P. Holds Annual Meeting

*THE NEW JERSEY Conference of the American Association of University Professors held an annual meeting last Saturday, March 24.

Chairmen for the local committee were Dr. John Bicknell, professor of English, and Miss Ruth Dominovich, associate professor of Modern Languages.

The conference began with a panel discussion of faculty-administration relations. Following luncheon, Miss Peggy Hein, of the National Office of the A.A.U.P. addressed the group on the topic "The Economic Status of the Profession." The conference ended with a business meeting.

WERD Installs New Transmitters, Plans Programs

*NEW TRANSMITTERS for radio station WERD have been installed in Asbury Hall and Hoyt-Bowne, according to Paul Friday, station manager. Students in these dormitories can now pick up WERD at 590 on the AM dial. If the present planning schedule is maintained, the West Wing will be able to receive the station next week. Friday has announced that WERD will broadcast first-hand Student Council election results.

Questionnaires Sent To Students

Questionnaires are being mailed out to all on-campus students next week to ascertain listening taste, with the planning of next year's programs in mind. Suggestions and criticisms can be mailed to Paul Friday at any time.

WERD Staff Meets Thursday

Friday has also announced that the radio staff, engineers and announcers will meet Thursday, March 29, to discuss general business.

For all students who can read French, the ACORN is now receiving regularly a newspaper from a university in Brussels, Belgium printed in French. This newspaper is displayed on the bulletin board in the Publications Office and students may see it at their convenience. The ACORN is also receiving publications from other countries such as Japan. Some of these publications are written in English.

Editorials

Election And Leadership

The student body will soon be asked to cast their ballots for the election of officers of the Student Council. This election will be one of the most important in the college's history.

Drew is undergoing a transition. The administration now has effective leadership in the form of President Oxnam. The school is beginning to look forward to a new, more mature cosmopolitan role—witness the new United Nations semester, the London program and even the weekend trips to New York City. Drew University is entering a phase of quiet maturity.

The student body must elect leaders who will represent their best interests. A student leader, a Student Council officer, is the liaison between his constituency and the administration. To be effective the new officers of the Student Council must represent student opinion to the administration, but they must do it in a way that will gain respect for themselves, and student body views. Once again, quiet maturity. More can be done through mutual respect, than through loud, boisterous leadership.

There is much to be done next year, and it is imperative that the student body elect officers that will be dedicated. The thing we need least are officers that ran because it would be politically advantageous, or because they like to see their names up in lights.

The Acorn traditionally does not support candidates, and this tradition will not be broken today. We ask only that the members of the College of Liberal Arts look to their candidates and choose those who are sincere and not gloryseeking, and those that display the factor of quiet maturity. Elections should never be taken lightly by the student body or the candidates.

A. D. K.

Neither Abuse Nor Misuse

A few months ago Drew students were sorely hurt and abused because no posters were allowed on the trees. At that time it was announced that this ban would be lifted during the Student Council elections in order to further the campaign. Now that time has arrived, and some of our mature students have reacted to it in the same manner that causes us to lose our privileges on campus.

Before we have even come to the primaries, posters have been defaced, ripped, and adorned with crude sayings. It would be lowering the standards of this newspaper and insulting the intelligence of most of our students to enter upon a long dissertation about why this is wrong. If individuals are in college and still continue this sort of thing, there is little we can do.

This behavior, sad to say, is not even high-schoolish. It goes back to the grammar school days when some little mind was the first in his block to know the meaning of a "dirty word" and to show his superiority would write it on fences, streets, etc.

Candidates are not being aided by their opponents' being subjected to this sort of treatment, and we are positive that this action has not been a part of any of their campaigns. All this has done is to make Council elections look cheap and cause them to lose respect. We don't need this on our campus, and every student is responsible to see that it doesn't happen. We are not asking you to be your brother's keeper. Just tell him to "Grow up!"

R. G.

DREW ACORN

Established in 1928

EDITOR-IN-CHIEF

George Eckstein

ASSOCIATE EDITOR

Roberta Gallagher

Co-News: Genie Carter
Valerie Greenspan
Assistant News: Chris Harris
Co-Features: Robert Kaye,
Charles Semel
Sports: Adam Kaufman
Secretary: Joan Davidson

Business: Jeff Gillman
Advertising: Alan Huberman
Circulation: Carren Orsini
Photography: George Enslee
Exchange: Laura Merz
Typing: Alicia Berry
Copy: Victoria Bates-Gee

STAFF

News: J. Ahlstrom, P. Bailey, P. Clapp, J. Fink, J. Matson,
J. Samanick, B. Gecey, S. Campbell, L. Sausser, G.
Snell, A. Beck, S. Ballard, P. Farmer, S. Flanagan, C.
Towne, D. Murphy, C. Pryde, E. Selfridge, G. McCormack,
N. Clarke, K. Murray
Features: S. Mandel, L. Potterson, L. Ford, A. Menkin, M.
Slippen, J. Gravel, M. Zolota, D. Deana
Sports: S. Kot, J. Williams, R. Grunes, D. Kehoe, J. Allen, F.
Brooks, P. Petty, R. Hirschman, L. Day
Circulation: I. Smith, N. Vonderhorst
Advertising: L. Hannan, K. McFarland, G. Haney, E. Priestly,
Photography: D. Scott
Typing: J. Terrell, V. Bruce, J. Buckman, C. Hinton, G.
Spates, C. Davis, D. Miller, S. Bickell, N. Bennie, C. Mor-
ell, L. Menousek, B. Hinchshaw, P. Vega
Advisor: Mr. Harold Emery

Letters To
The Editor
Drew Hosts
Debate Tourney

Dear Editor:

In less than two weeks Drew will again be host to debaters from three states. However, this year, interest in debating at Drew is at its lowest in many years. This cannot be because the Debate Council is inactive. This year it has attended two day tournaments at New York University, Kings College, and Brooklyn College. It also attended the one day novice tournament at Saint Peters College, Jersey City, and has had several individual debates on the Drew Campus. These debates at Drew were not well attended.

The reason for this lack of interest in Drew debating cannot be because the Debate Team does not do well in its debates. The team came in first in the Saint Peters novice tournament. At the New Jersey Intercollegiate Speech Association Extemporaneous Speech Contest last week, David Allen, representing the Council, tied for third place. Here on the Drew Campus the Debate Team defeated Seton Hall 45-31.

In talking to students I have found that there are many who do not know what a debate is, or who have never heard a debate. Surely, everyone knows a debate is where people argue. But it seems in many cases, knowledge of this activity stops there. In an educational institution this is tragic, for debate is one of the best instruments for shaping and sharpening the mind. I feel that this lack of information constitutes the reason for the lack of interest. If this is so, then it should be easy to correct. The Fourth Annual Drew University Debate Tournament on Saturday, April 7, affords everyone an opportunity to become familiar with debate and debate techniques.

In closing, I should like to relate a story about a girl who attended last year's tournament. It took a lot of persuasion, but she finally agreed to listen to a debate. She enjoyed it so much that she stayed for all three rounds. Last week I found out that she has volunteered to be a timekeeper this year. I am not soliciting timekeepers here, but I suggest that anybody who comes may find out they like it.

Sincerely,

D. LOGAN POTTS,

Secretary-Treasurer

Newsnotes

The American Student Information Service announces that among 1,000 summer jobs in Europe still available to American college students are such choice positions as Life Guard at a world-famous Swiss resort, tutoring English in Finland, crew member on Rhine River barges and high paying office jobs in Germany.

Wages range from \$160 per month for the highest paying jobs in West Germany to only room and board in Spain.

Positions are available in such captivating spots as Alpine resorts in Switzerland, Costa Brava on the Spanish coast and Dusseldorf, known as the "Paris of Germany."

Students interested in summer jobs in Europe may write directly to the ASIS, 22 Avenue de la Liberté, Luxembourg City, Grand Duchy of Luxembourg.

Canterbury Club Meets Wednesday

The Canterbury Club will have a dinner meeting Wednesday, March 28, at 6:30 p.m. at Grace Church. The speaker will be Dr. Krumm, Chaplain of Columbia on "Christianity in An Age of Anxiety." There will be Evening Prayer and the election of next year's officers. For reservations see John Klapmuts, Pat Gee, Ken Stevens or Liz Ford.

This Week on WERD

MONDAY

7:30 Phil Stimmel

8:30 Christian

9:30 John Singer

11:00 Pete Aceves

TUESDAY

7:30 Phil Covert

9:30 Lori Neilson

10:30 John Parsons

WEDNESDAY

7:00 Omstead and Murtha

8:00 Doug Bennet

9:00 Bob Perry

"Echoes"

10:00 Scott Bickell

11:00 Dave Leslie

THURSDAY

7:30 Robert B. Cohen

9:00 Lloyd Stires

10:00 Al Bugaoff

11:00 Paul Vega

FRIDAY

7:00 Jim Heisler

8:30 Dan Daniels

9:30 Hoeltzel and Schlansher

10:30 Robert Benner

12:00 Chuck Carlson

SATURDAY

Off air

SUNDAY

7:00 Ivy Joe and Bob Smith

8:00 Ronald Klein and Art Juker

9:00 Ruth Schaeffer

10:00 Paul Rifkin

11:00 Gordon Black

Sixteen Vie For

(Continued from page 1)

the soccer team, a member of the Orientation Committee, ECAC, and varsity fencing, and a dorm counselor.

Dick Stafford was class treasurer his freshman year, on the Disciplinary Committee of Haselton Hall, and a member of Kappa Pi, Spring Production, Athletics Council, Columns, and the Varsity "D" Club.

The Student Council election committee reminds candidates that posters and other forms of publicity may not be posted within the public buildings of the university. This does not include college dormitories. Posters may be placed on the trees of the campus.

Any demonstrations, publicity stunts, etc., of an unusual nature should be cleared through the elections committee.

NSA Coordinates
College Activities

by Bob Harrall

"THE NATIONAL STUDENT Association is a college student organization including approximately one half the colleges and universities in the United States. The organization attempts to coordinate information on matters of student interest ranging from international affairs to individual campus problems. Any school which holds membership in the NSA may take advantage of services such as student travel programs, campus information services, a cooperative book purchasing program, and many others.

Realizing the benefits which may be gained from increased participation in this organization, the Student Council has decided to create the office of NSA coordinator to be voted upon at the Student Council election on April 12. The NSA coordinator will become the Drew delegate to the New Jersey region. As such, our representative will be called upon to cast votes covering NSA policy on many matters. It is hoped that the student body will take great interest in a position which will be representing Drew in an organization of national significance.

The Old Timer

"THERE IS AVAILABLE in the Office of the Registrar a file of materials on Summer Sessions. This file is not intended to be definitive or necessarily recommended." It is merely an accumulation of notices and catalogues of summer sessions which are acceptable to the College of Liberal Arts.

Students are reminded that before credit for courses in summer session can be guaranteed as acceptable to the Drew degree, they must be approved by the Registrar. Forms for requesting this approval are available in the Registrars Office.

Tires - Batteries - Accessories

HAROLD'S
TEXACO SERVICEKings & Green Village Road
Madison FR 7-9955

Gym Teacher Extraordinaire



MRS. MADELINE KENYON
(photo by Scott)

by Valerie Greenspan

Mrs. Madeline Kenyon, "instructor in Physical Education," is much more than just that title. Although her "number one job," as she put it, is being wife and mother to her husband, two children, and buck-toothed dog, she has endeared herself as "mother" to 239 other girls, through her job here at Drew. Mrs. Kenyon points out that she is also a purchasing agent (A&P), cook and seamstress, chauffeur (Brownies), maintenance manager (scrubbing, etc.), and vice-president of the paint company run by her husband.

Mrs. Kenyon is a native Long Islander, but she lived "a lot in Philadelphia." Now her home is in Morris Plains, which she likes for its small town atmosphere, plus advantages of proximity to New York City. Mrs. Kenyon enjoys most sports, but skiing is by far her favorite, one which she and her husband share whenever possible.

Of Drew, Mrs. Kenyon says it is "a fine school," and she finds

her job "very satisfying." Each student is a person, and therefore interesting and to "be understood." She finds that she sometimes thinks she has learned more from the girls than she has taught them.

The girls really respect Mrs. Kenyon's approach to Physical Education. It is not the "hup 2, 3, 4" high school method, but a more mature position of "enjoy yourselves." Mrs. Kenyon says that since she is teaching the country's future mothers, she is trying to instill in them an enjoyment of being physically active. "If you feel better, your children feel better, and your home is well-balanced."

Mrs. Kenyon confides, "Mrs. Voorhees is a real doll, and I am very lucky to work with her." Their department is now striving for a stronger women's P. E. and extra-curricular program. Mrs. Kenyon admires Drew's athletic teams for their hard work. She wishes more guys would get out of the grandstand, stop complaining, and run a few laps themselves.

Pitching right in with a badminton or tennis racket, Mrs. Kenyon is really part of her classes. After class, it is often hard to find a place around her desk — everyone wants to chat with her. Suggestions to publish Mrs. Kenyon's "maxims" have been heard. Sample — "Marriage is 70% giving on both sides." "If you don't learn to cook you won't have to" (incidentally, Mr. Kenyon has been called a "magnificent cook"). When one hears, "If I didn't think people were good, I wouldn't get up in the morning," it is no surprise that girls leave the gym wearing big smiles.

SUMMER JOBS
in EUROPE

THE 'new' WAY TO
SEE & 'live' EUROPE
SPECIALIZING IN
"European Safaris"
FOR SUMMER JOBS OR TOURS
WRITE: AMERICAN STUDENT
INFORMATION SERVICE,
22 Avenue de la Liberté,
Luxembourg City,
Grand Duchy of Luxembourg

One Hour
Martinizing Service

33 Kings Road, Madison

FR 7-2117

"The Most in Dry Cleaning"

HANK'S GIANT STEAK 45c

Submarines

Sausage

127 MAIN STREET, MADISON, N. J.

Open till 12:30 a.m. Parking!

Somerset Hills Dairy, Inc.

Bernardsville, N. J.

QUALITY DAIRY PRODUCTS
SUPPLYING DREW UNIVERSITY AND
OTHER FINE INSTITUTIONS

What Every Woman Knows



MRS. MARY ELLEN VOORHEES
(photo by Scott)

by Roberta Gallagher

Former cheerleader Mrs. Mary Ellen Voorhees has the bounce of a teenager, the understanding of a mystic, the patience of a saint, and is presently unfolding these attributes in her capacity as one half of the "Kenyon-Voorhees" team which has the gym in a constant state of fun and activity.

A graduate of Trenton State College, Mrs. Voorhees has been teaching for six years, although this is her first year at Drew. Since her graduation, she has taught in elementary, junior high, and high school but managed to take time from her P.E. endeavors to get married five years ago.

In her role as Mrs. Suburbia, this ex-Miss Ocean City High School — likes "to garden," but "right now I'm on a golf binge."

When I asked why this latest, she went on enthusiastically, "Golf is something you have to play all the time. It's a self-discipline game."

Enthusiasm and self-discipline are perhaps two of the more obvious traits of Mrs. Voorhees. This All-American girl with the well-scrubbed look just radiates enthusiasm which is perhaps why she is Morale Booster No. 1 on campus. As far as the self-discipline goes, although Mrs. Voorhees is one of those people who perpetually finds good in everybody, she settles for no less than perfection in herself. Mrs. Kenyon says with a grin and a wink, "She is neat to the point of distraction!"

A fan of Lerner and Lowe, Mrs. Voorhees considers a typical evening at home with her husband "sitting, talking, listening to music." When I tagged her "home-body" she said, "I think I probably am!"

As regards physical education, Mrs. Voorhees is a firm believer in President Kennedy's ideas. "Unless you are physically fit," she said, "you cannot fulfill your mental capacity. This country is going down because people are not physically fit." Her pet peeve in the motion-saving category is the electric toothbrush. Groan!

"The role of a woman," she says, "is one of part of the family." When I asked this gym teacher with the Shirley Jones look what she felt of the sophisticated woman, she paused. The snobbish pseudo-sophisticate is artificial, Mrs. Voorhees said, although she does admire and respect the "genuine sincere sophis-

ticate." Sincerity is the quality she most looks for in an individual.

Mrs. Voorhees is kind, gentle, and refreshing, quiet yet firm in her own way. In her classes she gets as much joy as her pupils from their "gold star" improvement and makes them feel that with just a little more work they will make the Olympics, especially her gold star divers.

If she is a type, she is a type that every woman knows and every man admires. Sir James Barrie in his play, "What Every Woman Knows" says of this certain something she possesses: "Oh, it's sort of a bloom on a woman. If you have it you don't need to have anything else; and if you don't have it, it doesn't much matter what else you do have."

Federal Cleaners

38 Main Street

Madison

	Reg. Price	Student Price
Suits	\$1.09	.58
Dresses	1.09	.58
Trousers	.55	.49
Shirts		1 for .59

©1962 INC. 1962

SOME PENS WILL GO TO ANY LENGTH TO MAKE A GOOD IMPRESSION

Case in point — the

Lindy
UTRACARBON

Extra length. Extra-long ink supply. Long long-lasting. You never refill. Long (fine or medium) point. You see what you write. Retractable. Easy top-button action. Six colors. Color of the pen is color of the ink. Perfect balance. No writing fatigue. Smooth-writing. No smudging, no skipping, no false starts. The Lindy UTRACARBON. It measures up.

to make a long story short... 59¢

manufactured by
Lindy Pen Co., Inc., Culver City, Calif., U.S.A.

KURTZ MEN'S SHOP

33 Main Street, Madison, N. J.

Headquarters for Young Men's Styles
and Fashions

Shoes, Slacks, Shirts, Jackets, Suits,
Sportscoats, Neckwear

OPEN THURSDAY EVENING TILL 9 P.M.

Serving Madison Over 40 Years

LOUVIS

Charcoal Delight

69 MAIN STREET

MADISON, N. J.

For the Finest in Charcoal Broiled Food

Highest Quality Steaks, Chops, Chicken

and Burgers

Automatic, Sanitary Equipment

Language Instructor Reviews "Mattress"

by Mrs. Ilona Coombs

When the house lights faded in Bowne Lecture Hall last Saturday night, the audience was in love with a girl named Fred and with the whole delightful production that the Drew students, under Jim Mintz's competent direction gave us of "Once Upon A Mattress," the old fairy tale with a new twist.

The production had style, gay impudence and high spirits, so much in keeping with the absolute unpredictability of the play, a fact which was a constant source of pleasure and merriment to the spectators.

As for the actors: Barbara Eichorn made a commanding lethal Queen Mother with just the right amount of reproachful resignation intended to make her son squirm with guilt. Let me commend her remarkably clear diction, so often lacking nowadays among professional actors.

Prince Dauntless was played with great spirit and delicacy by Jim Mintz whose interpretation of the character compared favorably with the Broadway production which carried the burlesque aspect a trifle too far. Jim managed to be extremely funny while likeable thus achieving a feeling of balance between spoofing and romance.

The highest praise is due to Gail Clayton who handled her role beautifully. She should be congratulated on the possession of a voice, presence and good looks that seem to have been created for no other purpose than the portrayal of a bouncy, tom boyish and utterly delightful Princess Winifred.

One of the highlights of the evening was the presence of King Sextimus who galvanized every scene in which he appeared. His silences were more eloquent than any lines and his pantomime a sheer visual pleasure.

Next let us mention Sir Harry, engagingly played by Roger Poole and the sweet voice and face of Donna Deans as Larken, his lady love. Mary Rudolph was a pretty and sadly disappointed Princess No. 12. Richard Chaplin as the minstrel, detached and dreamy, provided an excellent anti-climax to the joyous romps of the other characters. Neil Kaplan gave a spirited characterization of the wizard and Chris Burdett was a gay and meddling jester.

The rest of the cast is equally to be commended for a fine team work which gave unity and smoothness to the performance. It is to be regretted that the smallest of the stage minimized the choreography especially so in the number entitled Spanish Panic which was consequently a

little cramped.

The sets were attractive and in excellent taste and so were the costumes of the cast. The versatile and effective use of lighting should be mentioned as well as the spirited musical accompaniment.

Our thanks go to Jim Mintz and to all who participated in this excellent show which carried us happily, without a single cloudy or sluggish stretch through an evening of laughter and merriment.

WERD Presents "Sound of Us"

"THE SOUND OF US," new on WERD, premieres with Dr. Benjamin Kimpel, philosopher, and Mr. Dick Mushnitz, folk singers on opposite sides of a heated discussion of folk music.

Paul Springie emceed and tried to steer the singer into making concrete statements and into singing. However, "Mush" had ideas of his own. He opened with a blues number "Trouble in Mind" then proceeded giving the background of folk music. Dr. Kimpel managed to comment that he, himself, has difficulty enjoying folk music aesthetically. The lyrics and the haunting minor key music convey the sadness of life, and the good man said simply that he wishes to escape the reiteration of unhappiness. The pathos of folk music involves the listener, recalls and makes him relive painful experiences, and expresses optimistic hopes and aspirations.

"Mush" missed Kimpel's point, and went into a tirade on the origin of the blues and why he sings them. What could be more simple and desirable than listening to someone wail about his troubles?

The discussion went off onto several tangents, ranging from the rock and roll art form, defended by Diane Purdy, to the symbolism and lack of variety of attitudes expressed in folk music.

"Mush" rendered "Midnight Special," "Evolution Mama," and pluckings and strummings on the guitar and banjo with ability which contrasted with his rambling discussion.

Fighting Faculty Play Volleyball

"IN ONE OF the biggest funnights of the year the fighting faculty all-stars will take on the undefeated girls' volleyball team this Wednesday evening at 7:30. Representing the faculty will be such renowned figures as "Killer" Kenyon, "Tiger" Voorhees, "Eagle-Eye" Wright, "Bouncing Bob" Friedrichs, "Spike" Sawin, "Ma" Sellers, "Jitterbug" Jones and the Big "O" Paul Obler.

The evasive leaders of the all-stars stated that their team will hold "secret practises at unannounced times in unannounced places." Also being kept a deep secret (as a protective measure) is the faculty cheerleading squad, which is perfecting a new rendition of the twist cheer. Although these shy faculty members refuse to disclose their identities, we are assured that the display of legs that night may never be equalled.

Not to be out-done, the girls will be cheered on by a swinging set of Haselton-Baldwin boys led by Bob Benner and Tom Garver. The fellows have a very "interesting" repertoire of "cheers" prepared.

Women's Sports

"THE NEW WOMEN'S" swimming team swept 5 of 6 possible first places to swamp Farleigh Dickinson last Tuesday by a score of 37 to 17. The seven girls who participated were Barbara Stocker, Gretchen Zimmerman, Jackie Jones, Karen Healing, Elsie Spinner, Kim Hertlein and Loria Menousek.

Karen Healing started the team on its way by taking first place in the 40-yd. freestyle event, with Loria Menousek finishing second. Gretchen Zimmerman easily won the Breaststroke event and making it four first places in a row, Barbara Stocker took the backstroke and butterfly events. Continuing their fine performance, Drew won the medley relay with Elsie Spinner, Barbara Stocker, Gretchen Zimmerman and Karen Healing doing the honors. The freestyle team, composed of Jones, Hertlein, Shapiro and Menousek took second place in their relay.

The team's coach, Mr. Sahagen, was pleased with their performance, and stated that their rate of improvement indicates a very promising future.

Next Wednesday the team meets Centenary College here and spectators are encouraged to attend.

Social Chairman Review Production

by Judith Gravell and John Klapmuts

Editor's Note: Judith Gravell has worked on ten productions since her freshman year, serving as production manager for "Skin of Our Teeth" two years ago. She is also a past secretary of Foresters, Drew's drama organization.

John Klapmuts is presently the president of Foresters. He was the production manager of last semester's "Easter." And last years spring production, "Wonderful Town."

Miss Gravell and Klapmuts are the co-chairmen of the Social Committee.

"SPRING PRODUCTION — 1962, 'Once Upon a Mattress.' — was a novel and enjoyable fantasy. The musical comedy was most appropriately chosen for Drew campus—both in the aspect of humor and in the aspects of production. The performance was well received by its audiences and described as 'utterly delightful.' The play carried itself over some of the weaker spots of the actors and actresses.

Mr. James Mintz, director of the show, can be highly complimented on his directing. Considering the lack of response to auditions, he managed to cast and direct a show that ranks among the best seen on Drew campus.

Before beginning a criticism on the actors performances, a few notes on production are required. The one basic set designed by Beth Mintz was simple, imaginative, and most effective. The color combination and balance was artistic; however, smaller items, such as the thrones for the King and Queen, could have been improved. Costumes also seemed somewhat unfinished. For example, a peaked hat for each of the ladies would have forced a more complete appearance. Another aspect of production—lighting—was the weakest. Cues were slow or missed, some areas were unlit or unbalanced, and the range of effects was limited.

The five performances — Mr.

Mintz as Prince Dauntless, Gail Clayton as Princess Winifred, Jack Hawke as King Sextimus, Barbara Eichorn as Queen Aggravin, and Neil Kaplan as the Wizard—were excellent. Mr. Mintz can be given the credit for the best all around performance. His facial expressions were outstanding; his singing was excellent.

Gail Clayton got off to a slow start but warmed up after her number "I'm Shy." Her acting and timing made her exits seem perfect with the climax of her performance involving some clever gymnastics on twenty mattresses. The dominating queen was portrayed effectively with no slip of character. Mr. Hawke with one of the most difficult roles on the stage made his pantomime look easy and natural.

An adequate performance was given by Richard Chaplin as the minstrel. His voice although weak and lacking confidence was not greatly noticed because of his appearance and acting. The Jester (Christopher Burdette) was much too serious to have been the court clown. However, his voice was good and at times, especially the trio scene on the apron, he conveyed his role.

Both Lady Larkin and Sir Harry, Donna Deans and Roger Poole respectively, showed little feeling for their portrayals. This could be largely due to a lack of confidence or experience on stage.

The choreography as planned by Carolyn Morell was suitable to the play. The chorus' singing was on the whole good; they gave considerable life to some of the more uninteresting sections of the play. Freeman Woodbury seemed to lead the chorus with his strong voice and ready cues. The chorus' best number was "I'm in Love with a Girl Named Fred."



NEW! GOOD LOOKING—GIRL-PLEASING CASUALS IN NEW FRESH COLORS



Hush Puppies

BREATHIN' BRUSHED PIGSKIN CASUAL SHOES BY WOLVERINE

from **\$8.95**

School girls really go for smart-looking Hush Puppies and go for the way they stay like new. A fast brush-up does it. Wolverine pigskin "Hell-Cat" tanned to resist dirt, repel water. So comfortable, too, with crepe sole and steel shank. In fashionable, sporty wear colors.

SUBURBAN SHOP SHOES

28 Main Street, Madison, N. J.

FR 7-2115

MADISON YARN SHOP

40 KINGS ROAD
MADISON, N. J.
FRontier 7-2442

Druback Florist

Fine Flowers
Distinctive Gifts

FR 7-5454

6 GREEN VILLAGE ROAD
MADISON

Gerlach's Jewelers

Headquarters for the Bride
Diamonds - Watches
Silverware - Lenox China
61 MAIN STREET
MADISON, N. J.

Rose City Diner

143 Main Street
Madison, N. J.

For Your Convenience,
We Will Remain Open
till 2 a.m.

Dalena's

Barber Shop

14 PARK AVENUE
MADISON, N. J.

"Best Haircuts in Town"

MADISON PHOTO SHOP

48 MAIN STREET
FR 7-0522
MADISON, N. J.

Madison Pharmacy

WE DELIVER
66 MAIN STREET
MADISON
FR 7-0075-7-0076

Franco's Pizzeria

Franco Iossa, Prop.

4 PARK AVENUE
MADISON, N. J.

Our Specialty
Italian Style

WE DELIVER

FR 7-7761