

Drew Acorn

-- College Newspaper of Drew University --

Vol. 33—No. 22

DREW UNIVERSITY, MADISON, N. J.

April 25, 1960



President Fred G. Holloway greets Dean-to-Be Allen L. Weatherby shortly after announcing his appointment to the new post. Announcement was made Friday, April 8.

Full Schedule Of Events Set For "Day At Drew" Visitors

Drew will be host to more than four hundred high school students this Saturday, April 30, at the twelfth annual Day at Drew.

According to Mr. Alton Sawin, Jr., Director of Admissions and chairman of the program, half of this group of four hundred will be high school seniors who have already been accepted as members of next year's freshman class by Drew; the other half will be juniors who are now actively engaged in the selection of a college.

The students will arrive on campus between 9:30 and 10:00 Saturday morning. After registering at Mead Hall, they will attend a brief orientation assembly at which they will receive their first formal introduction to Drew.

The College Building will be their next stop. Here each student will attend three classes of his choice from the twenty-one classes to be held that morning. Each professor will summarize the material covered in his course and suggest advisable prerequisites for the course.

The students will have lunch in the University Center.

While the students are attending classes, their parents will attend a coffee hour in the University Center Multi-Purpose Room. A panel discussion concerning the various aspects of admission and adjustment to college life will follow. Dean Robert Schultz, Dean Florence Morris, Mr. John Bevan, Dr. James McClintock, and Admissions Director Sawin will comprise the panel and will answer questions addressed to them by parents. A buffet luncheon will follow.

During the afternoon parents and students will be free to participate in their choice of various activities. In Bowne Lecture Hall the college choir will present a concert. This choral concert will be followed by a one-act play to be presented by the Foresters.

Sports enthusiasts may attend the Drew-N.C.E. baseball game on Young Field at 2:30 or the Drew-N.C.E. Tennis match, also at 2:30 on the courts. The pool will be open all afternoon for those who wish to use it.

Members of the Green Key, presided over by Jodi DellaCerra Headley, will promote the program by conducting tours for all visitors, and answering questions from the students.

A refreshment hour to be held in Mead Hall at 5 p.m. will mark the end of the day's activities.

Mr. Sawin would like to remind all Drew students that they can help further the success of Day at Drew by keeping themselves and their rooms and dormitories in good order, for "on this day every aspect of Drew will be under close inspection."

Young Dems Attend Harvard Convention

The Young Democrats Club has been invited to send delegates to the National Student Mock Convention to be held at Harvard University in Cambridge, Massachusetts, from April 28 through May 1.

Andrew Saltis, President of the Club, Jeffrey Massuda, William Whitman, Herman Hansen, Lem Howell, and Adam Kaufman are the delegates who were selected to represent Drew.

The purpose of the convention is threefold: 1) to invite young college students from the entire nation to gain political experience; 2) to enable these students to meet with top leaders of the Democratic party; and 3) to enable students to discuss the issues confronting our country today.

Kaufman and Howell will serve on the Civil Rights Committee, Massuda and Whitman on Foreign Relations, Hansen on Labor, and Saltis on Defense.

Weatherby Assumes Deanship Schultz Retires From Position

Dean Robert Schultz, whose formal retirement will become effective in September, which will also mark his 22nd year as a member of the Drew faculty, has announced that his plans for the immediate future are to be dominated chiefly by traveling.

With the close of the present semester Dean Schultz will begin an extensive tour of the Canadian Rockies.

"My further plans for the future include tours of Europe, Asia, and South America, interspersed with studying and some writing pertaining to the relationships between the fields of economics and religion," he commented in a recent interview.

"I shall also pursue hobbies in the fields of photography and reading," he continued.

Schultz, who succeeded Harry M. Taylor as Dean of the College, took office as Acting Dean on March 1, 1959. He had first come to Drew as a Professor of Economics in 1938, and has for many years served as Head of the Economics Department.

Prior to coming to Drew, he taught three years at Roanoke College in Salem, Virginia. He received his B.S. from Haverford College and his Ph.D. from the University of Pennsylvania. During World War I he served as an officer in the United States Army.

Honor Frat To Induct 4

Four members of the senior class will join the ranks of the scholastically proficient on April 30. William Hayes, Richard Meizner, Lee Mondschein, and Elaine Price have been selected for membership in Drew's scholastic honorary society, Sigma Phi.

Eligibility for membership in the society requires a minimum cumulative average of 2.35 in the senior year. Hayes, who has concentrated in the field of political science, has at present a 2.54 average; Meizner, who has a chemistry concentration, a 2.44 average; Mondschein, a mathematics major, a 2.61 average; and Miss Price, whose area of concentration is the classics, a 2.58 average.

Public induction of the new members will occur as part of the Day at Drew activities. Additional students who attain a 2.35 average by the end of their senior year will be inducted at Commencement time.

On Tuesday, May 3, at 6 p.m. the annual Sigma Phi dinner will be given in the University Center Meeting Room to welcome new members.

Sigma Phi, founded in 1930, serves as a local organization to recognize exceptional academic achievement and "to promote high standards of conduct and scholarship." Dr. Arthur E. Jones, Jr., University Librarian, is president of the society this year.

Dr. Alan Leaming Weatherby, professor of English in the college of Liberal Arts, was announced as the new Dean of the College by President Fred G. Holloway.

The announcement was made Friday, April 8, at a special convocation for students and faculty held in Bowne Lecture Hall. Dr. Weatherby will assume his new duties with the impending retirement of Dean Robert Schultz on September 1, 1960.

Young Reps Poll Students

Richard Nixon and Adlai Stevenson received the highest number of votes in their respective parties in a mock primary election sponsored by the Young Republican Club last Tuesday.

This poll was a part of the Republican Club celebration of Nixon Day. The special day was prefaced by a speech on Monday night by Congressman Peter Frelinghuysen, who spoke on "Nixon, Case, and the Primaries."

"Earlier this year the club endorsed Nixon for the Presidency. It was decided that the best way to supplement that endorsement was by a special day during which a poll would be taken and information distributed, and questions answered," announced Logan Potts.

Last Wednesday club representatives of the club attended a meeting of the Morris County Young Republican Club. "The campus branch of the organization is trying to better its relation with the Country and State groups and give voice at these meetings to the opinions of the Republicans on campus," Potts added.

The next meeting of the Club will be held Wednesday and all are invited to attend.

For a complete breakdown of the poll, see page 3.

Seminary Concert Readied For Wed.

The Seminary Choir will present its annual Spring Concert on Wednesday, April 27, at 8 P.M. The program is similar to that which the choir presented on its mid-semester tour in the west.

The concert will open with Heinrich Schuetz' *Sing Praise To Our Glorious Lord*, followed by the works of composers Hassler, Lotti and Palestrina. Saint-Saens, Paul Christiansen and Robert Reed are to be featured, in addition to three Russian works, including *Hospodi Pomiloi*.

A group of specially arranged spirituals, a folk song, a traditional chantey and Grieg's *Land Sighting* highlight the program.

Madeline Pauli, coloratura soprano soloist of the Madison Presbyterian Church, will sing Frederic H. Cowen's *The Swallows*, Grieg's *Solvejg's Lied* and Mozart's *Alleluia*.

Other soloists from the choir are Samuel Kirk, Sidney Tate and David Dalke. Mr. Lester W. Berenbroick, director, will be assisted by accompanist Paul Abels.

The occasion will also witness the debut of new robes for the choir members.

Dr. Weatherby's appointment came about as the result of several months of consultation with a faculty advisory committee and President Holloway with Dr. Holloway acting as Chairman of the Committee. The advisory committee was originally comprised of Dr. Sherman P. Young, Professor of Latin and Greek; Dr. Robert G. Smith, Professor of Political Science; Dr. John F. Ollom, Professor of Physics; Dr. Alan L. Weatherby, Professor of English. When interest in Dr. Weatherby was expressed, he was dropped from the committee and replaced by Dr. Robert L. Bruhnhouse, Professor of History. After being nominated by the Advisory Committee, Dr. Weatherby was presented to the board of trustees and formally approved on Thursday, April 7.

Among his many duties, the Dean of Men serves as Chairman of the Faculty, recommends new faculty appointees to the president, recommends changes in the budget to the president, works on various committees such as the committees on admission, scholarship, E.C.A.C.; and acts as personal advisor to all students and faculty members on all matters they may choose to bring to his attention.

Dr. Weatherby is the sixth Dean of the College of Liberal Arts. Former deans were: Dr. William Pearson Tolley (1928-1931), new Chancellor of Syracuse University; Dr. Frank Glenn Lankard (1931-1950), Dean of Baldwin-Wallace College, Ohio; Dr. Raymond A. Withey, Jr. (1950-1958), President of Green Mountain College, Poughkeepsie, Vermont; Dr. Harry M. Taylor (1958-1959), Methodist Minister, Harrisburg, Penna.; and Dr. Robert Schultz (1960-1961), presently Dean of the College of Drew University.

Feldman And Banks Vie For Presidency

Leonard Feldman and Leslie Banks were nominated to oppose one another for the presidency of the Student Council for 1960-61 in the primary election held last Friday.

Nominated to races for the other council posts were Richard Del Guidice and Gerald Rankin, Vice-Presidency; Kay Richards and Edna Mae Parker, for secretary; and Edward Daniels and Lyndon Smith, for treasurer.

Ronald Saldarini and Marian Dickenson run unopposed for positions.

All candidates are members of the junior class.

The final elections, reports Student Council Vice-President Robert Berger, will be held Friday, April 29 in the University Center from 9:00 a.m. continuously through 3:30 p.m.

Drew Acorn

-- College Newspaper of Drew University --
Established in 1928

Published every Monday during the college year (excluding holidays and exam periods) by the students of Drew University.

Yearly subscription price \$4.75. Single copy 20 cents.

The ACORN reserves the right to edit or reject material. Signed material does not necessarily express the opinions of the Editorial Board.

APRIL 25, 1960

Member of Associated Collegiate Press

Editor-in-Chief

Eleanor Selfridge

Associate Editor

Michael Solomon

Business Manager

Stephen Uberman

Editorial Board

News Joyce Samanick Circulation Kay Richards

Features Jane Brown Photography Richard Wrathall

Sports Douglas Davis Exchange Paul Troop

Advertising Manager Jeffrey Gillman

Adviser Dr. Paul Obler

Entered as second class matter at the post office at Madison, New Jersey, October 22, 1950, under the act of March 3, 1879.

"I wholly disapprove of what you say but will defend unto death your right to say it."—VOLTAIRE.

Editorials

A Sincere Welcome

To you, the 450 high school students participating in the twelfth annual Day at Drew program, a sincere welcome is extended by the entire campus community.

We feel that you are being afforded an unusual opportunity in being not only permitted to view the physical aspects of the Drew campus, but also in being able to enter into the various phases of campus life together with many of the same people whom you will be meeting and with whom you will be participating in your classes, extra-curricular activities, meals, and dormitory life when you return next September or the following September as full members of the campus. To our knowledge, few campuses are able to offer this opportunity to prospective students.

At the same time we feel privileged in meeting you, for you will soon be working with us and with one another as the classes of '64 and '65, and from your ranks our successors will come.

We hope that you will be impressed with our modern dormitories, gymnasium, and University Center; we hope that you will find your first encounters with the college classroom stimulating; we hope you will enjoy meeting your future classmates; above all, however, we hope that you will recognize the sincerity with which this welcome is extended to you by the campus community, through the members of Green Key and the entire Acorn staff.

E. A. S.

Your Move

This Friday, April 29, is the date for the final Student Council elections. Ten people will be seeking office with two people opposing each other in the contests for President, Vice-President, Secretary, and Treasurer and two candidates for the offices of male and female Freshman Advisors. You have a choice to make, an important choice. Have you thought about it? The strength of the Student Council rests upon your decision. Whether it will be a strong or weak organization can be partially decided upon by your selection of candidates. This is not meant to infer that any of the candidates are not well-qualified for office. They all are. We merely wish to emphasize that it is up to you, the student body, to select those candidates who you feel are best qualified for the position they seek and support them. The Student Council is YOUR organization and therefore, it is up to you to make it an effective one.

M. S.

Congratulations!

The Acorn Staff wishes to extend congratulations to Dr. Allan L. Weatherby on his appointment as Dean of the College of Liberal Arts of Drew University. We feel that the persons responsible for this appointment have made a wise choice, and we are certain that Dr. Weatherby's elevation will result in a compatible and intelligent student-faculty-administration relationship.

Editorial Board

Origins Of The Medieval World Today's Considerations Of Past Exchange...

Seasonal Attack

From Wayne State University's Daily Collegian comes the tale of at least one student stricken by spring fever.

A touch of warm weather recently caused one Wayne State student to don Tarzan garb and lurk in the vicinity of the student center, shouting for his "Jane." Coeds fled in terror as "the beast" brandished his club and sounded his mating call.

Police were not impressed. The student was taken to the 13th Precinct for observation.

He was released when some fraternity brothers assured police that his seasonal attack comes on only when the temperature goes above 30 degrees. As the evening temperature dropped, the Wayne State Tarzan returned to normal.

Breach of Promise

Kansas University women were warned by male students via telephone that a party raid was in the offing.

This resulted in a three-hour vigil over the women's dormitory. The Daily Kansan reports that a force of University deans, campus policemen, the director of dormitories, resident directors and counselors waited in the lobby of the dorm for a raid that never occurred.

The vigil did have one result. Coeds and their dates were met at the door by the contingent of University officialdom, causing each beau to deposit his belle with more than usual haste.

Signs Of Spring Encourage Students To Contract Fever

Drew campus to have been exhibiting a great many signs of spring, which have caused students to develop acute signs of spring fever. The Acorn, wishing to investigate this matter, sent out to ask those afflicted students, "What sign of spring first caused you to develop this seasonal malady?"

Bill Blair noticed that hearty folk were abandoning their shoes and socks, exposing bare feet, some of which were even equipped with bright polish. The grass, finally green, must have been an overpowering temptation.

John Langford was pleased with the more pleasant general atmospheric condition of warm sunlight. Jodi Della Cerra Heady saw the immediate manifestations in the appearance of sunbats and sunglasses. Jerry Wolfson specifically noted "Deanna Formica's

by Richard Olmsted

From the viewpoint of traditional historians, the centuries between 300 A.D.-600 A.D. which witnessed the final dissolution of classic civilization, constitute the Dark Ages. Gibbon's remark that he had described the "triumph of Barbarism and Religion" expresses this point of view, as did Pope's uncharitable line that "the monks finished what the Goths began." The implication in this thinking is that not only these early Medieval centuries, but indeed all the years between the collapse of Roman civilization and the rebirth of the classical tradition in the Renaissance were a complete spiritual and intellectual waste.

Recent scholarship, however, throws considerable doubt on this thesis. It questions, in the first place, whether the ancient civilization in its late Roman form was really worth preserving, even without the Goth and Lombard conquests, simply because it had ceased to have validity for Western man. It points out, further, that the same centuries which completed the decline of the ancient culture, witnessed the birth of practically every basic concept underlying our Western heritage. The 'Dark Ages' were a transitional period in which the minds and spirits of men were bent in a new and ultimately far more profitable direction.

The current state of historical perspective on this era has been well summarized by Dr. W. C. Bark, of Stanford University, in *Origins Of The Medieval World*. In Dr. Bark's view, the economic

dislocation in western Europe and the successive invasions between 300 A.D. and 600 A.D., constituted ideal conditions for the evolution of a new civilization. Men were forced to meet the daily needs of a changing existence on a practical rather than a philosophical level, and they adapted exceedingly well. "Out of these circumstances," says Dr. Bark, "arose a kind of hardheaded, openmindedness toward adaptation to changing conditions rarely to be found in history, and never elsewhere to be found over so long a period."

Viewed in this light, the triumph of barbarism and religion is rather to be welcomed than deplored. It brought with it a technological and sociological revolution, and ultimately a revolution in ideals and thought. It made possible the long, slow and hardy growth of the concept of freedom and the worth of the individual that distinguishes Western civilization from all others. The 'darkness' of the Dark Ages was that of the womb rather than the tomb.

W. C. Bark, *Origins of the Medieval World* Doubleday Anchor Books, 1960

Lyrics From The Book

by Peter Cain

"The creative individual must have the courage to avail himself of his freedom and the humility to place himself in accord with the structure of life. A successful achieving of this dialectic is the secret of human happiness and creativity." (Rollo May).

If, then, man's need is a need for freedom that is structured, why can he not find what he is seeking in the traditional forms of religion? He cannot, because the traditional religious forms have lost meaning for him. As Jung says, "... the more beautiful, the more grandiose, the more comprehensive is the image that has come into being and been handed on, so much the further is it removed from our experience. Nowadays we can feel our way into it and perceive something of it, but the original experience is gone."

The plight of modern man, says Jung, is that the symbols of traditional faith have lost their vitality and their compelling quality. He says further that "It would seem to me far better to confess strong-mindedly to the spiritual poverty of a want of symbols than to feign a possession of which we can in no way be the spiritual heirs." Indeed, Jung sees this poverty as a potential sign of life. Protestantism has traditionally devoted itself to iconoclasm. When religious symbols cease to have meaning for man, he naturally rejects them, for the nature of a meaningful symbol is its compelling quality. He asks: "Are we not commanded, somewhere, to hold no masquerade, but perhaps even to make our own garments ourselves?"

We are spiritually free. Now are we courageous enough to avail ourselves of this freedom?

Students wishing to apply for National Defense Loans for the school year 1960-61 are urged to pick up forms this week in the Office of the Treasurer. A 1.00 grade average is necessary in order for the candidate to be considered.



"LET'S CUT"

These are the words on the lips of students, struck with spring fever, as they enjoy sunshine and song between classes.

"Meet The Council Candidates"

Final Candidates Named In Student Council Primaries

The culmination of a week of campaigning took place on Friday April 22, in a primary vote, in which the following candidates were selected as finalists: Vice President, Richard Del Guidice and Jerry Rankin; Secretary, Edna Mae Parker and Kay Richards; Treasurer, Ed Daniels and Lyndon (Rocky) Smith.

Bob Berger, Student Council Vice President and chairman of the Election Committee, reports that 375 out of a possible 507 students, or 74 percent, voted. Due to numerous requests through the Student Council, the polling place was changed from the B.C. building to the Student Union. Bob Berger seems to feel that this move might have contributed to 68 additional votes over the 61 percent turnout for the vote on the Honor System Referendum. Bob felt, however, that the larger voting turnout was primarily due to a keen interest in the candidates themselves and not necessarily on the issues involved. The Freshman Class, voting for their officers in the B.C. building, earlier in the year, drew an 80 percent vote.

To increase the total vote count, Bob Berger plans to have the polls open from nine a.m. to three-thirty p.m. this Friday, in the Student Union for the General

Advisers Running

Minus Competition

Propose Initiation

Next years frosh may have a few surprises in store for them when orientation time rolls around next September. Marie Dickenson and Ron Saldarini unopposed candidates for co-Advisers next year's Freshman Class say they're in the process of planning "big" things for the newcomers.

One of the new proposals Marion and Ron are considering is subjecting the Frosh to a new form of initiation, somewhat similar to the hazing which freshmen undergo. As Ron, originator of the idea, expresses it, "This new form of initiation, if well planned, will do much to increase the spirit of the new Freshman as a class. Besides this, it will promote more contact and friendly interaction between the newcomers and upperclassmen. This may be a step towards better school spirit on the whole campus, and I think most of us will agree that what this campus needs is a shot in the arm as far as spirit goes."

Both Marion and Ron are eager to make the new class feel at home at Drew; and they've both had a good deal of experience, having been members of the Orientation Committee for the past two years. They have also been active in a wide range of extra-curricular activities—from Varsity Sports to social planning.

Schnippers Stationery

45 Main St. Madison, N. J.
FR 7-9789

FOR USED CARS

Havell Volkswagen
159 South Street
Morristown

New 1960 Volkswagen

HAVELL MOTORS

Morris County's
Only Authorized
Volkswagen Dealer

Colombia Road
opp. Morristown Airport

DRUBACK FLORIST

COMPLETE FLORAL AND GIFT ARRANGEMENTS

• DANCES • PARTIES • WEDDINGS

6 Green Village Rd. Madison, N. J. FR 7-5454

"Greatest Values in New Jersey"

Sam Gordon's

APPLIANCE SUPERMARKET

33 CENTRAL AVE. MADISON, N. J.

Largest and most complete selection of T.V., Radios, Hi-Fi, Stereo and Major Appliances. Best appliance service anywhere.

Expert Watch and

Jewelry Repairs

ROSE CITY

JEWELERS

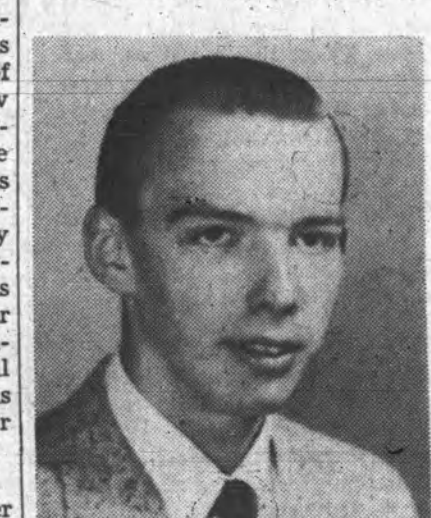
57 Main St. Madison FR 7-1246

Les Banks And Lenny Feldman On "If I Am Elected, Then..."

Campaigning for Student Council President has a serious side as well as a publicity side. Platforms, promises and evaluations of the candidates past records must be considered if the right choice is to be made.

Leslie Banks has for the last three years participated in the College Choir and is presently choir manager; he has also participated in the Foresters. Green Key and class activities.

"Too many are sitting back and letting others run the student



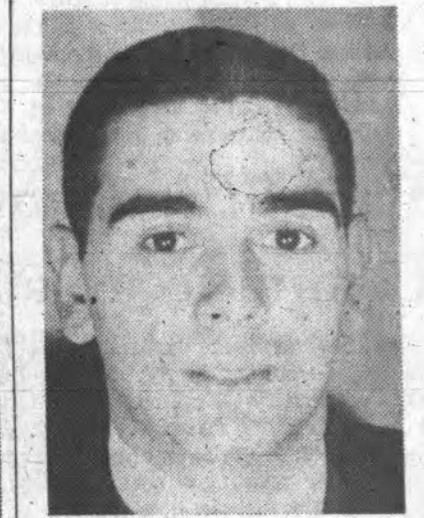
LESLIE BANKS

council. The major part of my platform is to better the relationship between the council and students. This I propose to do by appointing committees with students who are not representatives. If the representatives knew exactly what their responsibilities were the council would be able to function better; at the first meeting this problem would be taken up and solved. One further way to increase council interest is to urge more students to attend the meetings."

Leonard Feldman is a member of the student council, a representative on the Extra-Curricular Activities Committee, a member of the Student Court, Vice-President of the New Mens Dorn

and a member of the Mathematics Club.

"The problems of the council are two fold: internally it must become more representative of the students; and externally the prestige of the council must be raised. The former can be accomplished by the council taking up more suggestions and more meaningful topics. Examples of this would be to appoint a committee, to comply with suggestion of the Extra-curricular Activities Committee and form a student com-



LEONARD FELDMAN

mittee to suggest improvements to the ECAC; this group would take up the question of whether we should charge outsiders at some events in order to offset an activities fee increase. Other ways of improving the council like making the meeting time more flexible and petitioning the Acorn for more publicity including a regular column would give new meaning and life to the council and better overall atmosphere to the campus.

The A.D.A. will hold a special meeting tonight in the University Center Multipurpose. Election of officers for next year will be held, and a film will be shown. All members are urged to attend.

LOUVIS CHARCOAL DELIGHT

For The Finest In Charcoal Broiled Food

Highest Quality Steaks, Chops, Chicken & Burgers

Automatic, Sanitary Equipment

69 MAIN STREET

MADISON, N. J.

Student Art Masterpieces Promise Enjoyment To All



"THE FINISHING TOUCH"—Drew artists put the finishing touches on their works to be shown at the annual student art exhibit from April 30th through May 3th in the multi-purpose room of the Student Union. The pictures have been done in Mrs. Korn's sketching and painting classes where students are encouraged to develop individual style and technique.

Racial Problems Discussed; Committees To Seek Facts

The second open discussion on the responsibility of our university community in the racial crisis was held Tuesday, April 5. Richard Campbell opened the meeting by reading a short summary of the last session.

The discussion began with consideration of the question, "Do we have a responsibility to local racial problems?" Those present readily admitted their responsibility and the discussion moved to consideration of how to execute this responsibility. Discussion moved slowly when this small group of about 25 members of the campus community began to question how to attack the subtleties and ambiguities of the campus and community race problems. Several people expressed concern about the prejudice and sin implicit in the general lack of interest in this whole question throughout the campus community.

Social isolation of minorities on campus was mentioned and several times people noted that there is a wide spread ignorance of the fact that there is any problem locally. It soon became evi-

dent that even though those present at the meeting knew of problems in local retail stores, public education, local employment practices, seminary field work, university admissions and even in their own feelings very little specific information was available as to the exact nature of these problems and, therefore, little could be said as to exactly how to seek remedies for them.

As a result of the two-hour discussion it was resolved that four committees be set up to investigate and report in four large areas of concern. These committees would seek first the facts and then recommend action. Lists will be posted to allow sign-ups for these committees.

All men of the junior class interested in being considered for positions as Men's Dormitory Counselors for the year 1960-61 are invited to apply this week in the Office of the College Dean.

GRUBER'S BAKE SHOPS

MADISON

VISIT OUR NEW AND MODERN STORE LOCATED AT THE MADISON SHOPPING PLAZA.

OUR 34 MAIN STREET STORE CARRIES A COMPLETE LINE OF ITALIAN PASTRIES & COOKIES.

MODERN BARBER SHOP
Specializing in
Ladies', Gents', Children's Haircutting
56 MAIN STREET, MADISON
PETER CATTANO—proprietor

Take A Coffee Break At

Graulich's Snack Bar

Charles the Florist
FLOWERS AND CORSAGES
FOR ALL OCCASIONS

7 Park Avenue, Madison

FR 7-1044

Flick Shows Hitler Reign

"Triumph of the Will," a Nazi propaganda film made in 1936, will be shown in Bowne Lecture Hall on Friday, April 29 at 7 p.m. Dr. Smith will introduce the massive three-hour spectacle.

The project was ordered by Hitler himself, as a filmed record of the First Party Convention at Nuremberg.

Every aspect of the historic meeting, from the incessant parades, the impassioned oratory and the drilling of troops, to their massed sports and even their mass feedings was captured by several photographers. Nothing was spared to assure them strategic positions.

Behind its pictorial realism were technicians trained to transform reality into "truth."

Both Hitler and his propagandist minister, Goebbels, realized that the enthusiasm of the party members at Nuremberg were less important than the transmission of that spirit to the millions of ordinary Germans everywhere who would see the film in their theatres.

One can imagine the impact these realistic scenes had upon a people who wanted fervently to believe in the god-like quality of their Führer, who had already elevated Nazism into a religion.

Season Observed In Dionysian Rites

As last Friday's setting sun disappeared at the horizon, the slanting rays glittered on the golden phallic symbol. This was the scene of the spring fertility rites of Drew's Dionysian Cult.

An invocation by the high priest opened the celebration to the gods, followed by a thanksgiving for the prompt arrival of spring. The high-priest then offered a prayer for continued fertility. The priest admonished the cult to observe the sacred Rites of Spring, whenever and wherever possible.

The service moved to the subterranean where the arch-priests prayed and read mystic writings. Bacchus' rites were performed with an inspiring dance by the

Thinking of Getting Engaged?
Buy Your Diamond with Confidence at
GERLACH'S JEWELERS
61 MAIN STREET MADISON, N. J.
Gorham & Towle Silver - Lennox China

S. Lerner Elected Pi Delta President

Sheldon Lerner, former Associate Editor of the Acorn was elected President of Pi Delta Epsilon for 1960-61 at a meeting held last Wednesday in the Workroom of the University Center. He will succeed Jodi DellaCerra Headley, who has presided over the honorary journalism fraternity this year.

Ballard, Beardow Get Study Grants

Julie Ballard and Jane Beardow have been announced as this year's recipients of the Woods Hole Laboratories Scholarships. Both awards cover full tuition and living expenses at the Woods Hole Oceanographic Institute at Cape Cod, Massachusetts.

Julie plans to study marine invertebrate zoology, while botanical ecology proves Woods Hole's main attraction for Jane.

The six-week study period, beginning June 21, will include lectures, laboratory sessions, some original research and several field trips.

Both girls were first singled out by Drew from the ranks of junior botany and zoology majors as most qualified for the summer grants. The final decision, however, was made by the Institute, itself.

Choir In Special Program

The College Choir will present a special concert on Friday, April 29, at the Bloomsbury Methodist Church in New Jersey. The occasion is the celebration of the one-hundredth anniversary of the Bloomsbury Church, which has invited the choir to participate in part of the special program.

Mr. Berenbroick, the choir's director, will lead the group in a full program of sacred and secular numbers, beginning with a group of Gregorian Chants and Schuetz' Kyrie Eleison. After a

happless virgins. The celebration concluded with the consecration of the new high-priest and priestess.

Patricia Taite, former Acorn Editor-in-Chief, was elected secretary of the organization at the same meeting. She succeeds Alice Chiarello.

It was decided at the meeting that Pi Delta Epsilon should become a functioning, rather than a merely nominal group. Workshops, roundtable discussions, and lectures were suggested to be included in the group's program for next year.

A state conference of the New Jersey Associate Collegiate Press has been scheduled to take place on the Drew campus next fall. The fraternity expressed the desire to sponsor this activity, previously the sole responsibility of the Acorn. The N.J.A.C.P. includes yearbook and literary magazine editors as well as newspaper editors, but operates independently of the National Associate Collegiate Press.

Retiring members of the society include Miss Chiarello, Spencer Eddy, Mrs. Headley, Nancy Marshall, Judith Smith, and Carl Verussio, admitted in former years, and Arthur Binz, John Fischer, and Gerow Reece, who were elected to the society this year.

number of Russian hymns and several intonations, the choir will complete the sacred portion of the program with the contemporary Cry Out and Shout of Kurt Ny-sted.

The choir will then join in some folk songs and ballads, ending the concert with a group of spirituals. Choir members who will sing solos are Kenneth Perenchief, John Langford and David MacDonald.

**ELIZABETH'S
BEAUTY SALON**

5 Waverly Place Madison
FR 7-1952

**ANOTHER
UNIVERSITY
CENTER**

SERVICE

**DRY CLEANING
and
LAUNDRY
by**

Morey LaRue

SHIRTS

• Brilliant Laundered
• Choice of Starch
• Buttons Replaced
• Transparent Packaging

GARMENTS

• Sanitone Dry-Cleaned
• Custom Finished

Two-Day Service

Drew Dons Spring Finery For Twelve Year Tradition

When wide-eyed high school seniors and juniors invade Drew's campus on April 30, resembling somewhat the March of the Madonnas, it will commemorate the twelfth year that Drew students will arise early on a Saturday morning, three twelfth annual Day at Drew.

Having begun in the pre-Saw-in era, this "sneak preview" for aspiring students and their parents closely resembles the format established in its inauguration by Mr. Richard Morgan in 1948.

Initially the purpose of Day at Drew was to give high school seniors an opportunity to see the college in action, and to encourage more students to apply. However, now the emphasis is placed on the senior group already admitted and juniors deciding on the colleges they wish to attend. Also this gives the administration the opportunity to screen prospective students and to interest those capable of Drew's work.

Last year was the first time parents have been accommodated with special programs designed for their interest. This consists of a panel discussion with some members of the administrative staff, the purpose being to answer parents' questions and to inform them about several aspects of college life.

In the past, Saturday classes were canceled for the day, although under the present system only the addition of special classes is necessary. This is done to give the students a chance to sample the field of their choice, every department being represented. Twenty faculty members will participate.

Also, traditionally, Green Key members assist and are the guides for the many spectators.

If past experience leaves way for any prediction, tourists will be in every nook and cranny from the third floor of the New Women's Dorm to the basement

**DE SANTIS
TRAVEL BUREAU, INC.**

Steamship
Airlines
Cruises
Tours
26 Waverly Pl. Madison, N. J.
FR. 7-2462

in B.C. According to Mr. Alton Sawin, Jr., Director of Admissions, it is the job of everyone to be "on display," and show a typical college campus, Drew at its best.

Student Musicians To Perform Sunday

A piano recital under the direction of Mr. Konrad Wolff, instructor of piano, will be presented in Bowne Lecture Hall this Sunday, May 1, at 4 p.m.

Composers who will be featured include Chopin, Beethoven, Schubert, Soler, Ravel, Mozart, Haydn and Brahms. Among their works to be performed are *Impromptu in F Sharp Major, Op. 36, Sonata in F Minor On the Name of Haydn, and Nocturne, Op. 15, No. 1.*

This year's program marks the first inclusion of a vocal number in the annual presentation. Robert Boyll, baritone, will sing *Als Louise*, accompanied by Mary Ellen Frisch on the piano. Mr. Boyll, of the Graduate School, studies with Mrs. Evangeline Bicknell.

Students participating from the college are Mara Barens, Mary Ellen Frisch, Maxine Idee, Evelyn Lantz and Sandra Parrish.

Other compositions in the two hour recital include *Rhapsody in G Minor, Op. 79, and An Chloé.*

Straw Vote Taken By Young Reps., Nixon And Stevenson Lead Tickets

In a poll of the University of Drew Young Republicans reported that in the sampling of 344 students some 149 students considered themselves independents, 134 Republicans, and 61 Democrats.

The Republicans favored Nixon over Rockefeller 85-14 for the presidential nomination. The leading Vice Presidential choice was Rockefeller with 41 votes, but Secretary of Labor Mitchell, a Roman Catholic, drew 12 votes.

**WALT SCHULTZ'S
COMMUNITY GAS STATION**
Kings & Green Village Roads
Madison FR 7-9774

COUNTRY CLUB MOTORS INC.
Ford Thunderbird Falcon
A-1 Used Cars
Excellent Service
14 KINGS ROAD, MADISON, N. J.
FR 7-4100

Cats In The Belfry, T'bird In The Garage Of Future Dean

by Patricia Taite

"Weatherby", our future Dean will tell you, means sheeptown, and is of Anglo-Saxon derivation. (The "L" stands for Learning.) His interest in the derivation of names and words probably stems from the research which he did for his Doctorate Thesis, which is entitled *Language in the Realms of Nature and Grace*, and deals with the way in which pre-scientific language theory effects the way in which people write.

Dr. Weatherby is also interested in writing, and he goes about it in a rather unique way. Most writers work steadily over a long period of time on any specific piece, but Dr. Weatherby says he will sit down in front of a typewriter and write for a week, or however long it takes him to finish the piece. Juniors and Seniors might remember his short story in *Columns*, 1958, *The Definition of Gideon Finger*, which he says was written in this manner. He contends, however, that in his writing he usually winds up with "things" too long to be short stories, and too short to be novels.

Another hobby of Dr. Weatherby's is cats. He presently owns two, a rare descendant of the Egyptian temple cats, "Koufu", whose tail is six inches longer



A familiar sight indeed, is our new dean, Dr. Weatherby, in his shiny red Thunderbird.

than that of an ordinary cat," and until Mrs. Weatherby finally climbed a ladder and retrieved the misplaced temple cat. "Each year, in Freshman Composition Class I receive at least one essay on cats from a freshman who knows of my interest in them and thinks this is an easy way to pass the course." (Another perennial in that class, according to Dr. Weatherby, is the student who finds out the Daniel Drew was a real "rotter" and wants to tell him all about it.)

The newest addition to the menagerie at the Weatherby's is "Samantha", a fourteen month-old Basset Hound, whose birthday is the same as Doctor Weatherby's. "Sam" gets along well with the cats, and attends Dog Etiquette School with Miss Dominovich's poodle.

Recently, the good Doctor discovered Beatniks, and spent several weeks buried in books by Kerouac and poems of Ferlinghetti, learning all he could about them.

Dr. Weatherby received all his degrees from Harvard University. During the twelve years or so between the time he received his Master's and his Ph.D. he taught Math at the Woodstock Country School, and moved to California, where, working closely with writers, researchers and directors in Hollywood he came in contact with such people as Franz Werfel, Thomas Mann, Aldous Huxley, Leopold Stowkowski, James Hilton, and Nathaniel West. So if you want to "shake the hand that shook the hand," our new Dean's hand will be the one to shake.

For Fine Dining In Pleasant Atmosphere

Colonial Inn

TRY OUR SPECIAL STEAK DINNER

For Reservations Call FR 7-0869

54 MAIN STREET

KITCHEN OPEN To 11:30 P. M.

MADISON, N. J.

DE SOTO - PLYMOUTH - VALIANT

SALES • SERVICE
Dependable Used Cars
— FR 7-0240 —

MAIN AUTO SALES

134 Main Street

Madison

Open 'Til 9

Rider Hands Rangers 2nd Straight Defeat

Rangers And Howard Play To 7-7 Draw

Drew and Howard fought to a 7-7 tie in the baseball opener Tuesday afternoon on Young Field. Although taking a 6 run lead on the strength of a 7 run outburst in the second inning, the Rangers couldn't hold on long enough as Howard chipped away at the margin and finally tied the score in the eighth inning. At the end of the ninth inning the game was called on account of darkness.

Dick Del Guidice worked the first five innings and allowed only two runs, one of which gave Howard a brief 1-0 lead in the first inning. In a wild second inning the Rangers collected six hits and seven runs, knocking out the Howard starter.

Dick Stafford came on to pitch the sixth and Brian Coffey worked the last three innings. Walks got both pitchers in trouble as the visitors scored 2 in the sixth and 3 in the eighth to salvage a tie.

INTRAMURAL SOFTBALL SCHEDULE

(1-Freshmen; 2-Sophomores; 3-Juniors; 4-Seniors)

APRIL			
25 Mon.	1 vs. 4;	2 vs. 3	
27 Wed.	1 vs. 3;	4 vs. 2	
29 Fri.	1 vs. 2;	3 vs. 4	
MAY			
2 Mon.	3 vs. 2;	4 vs. 1	
4 Wed.	2 vs. 4;	3 vs. 1	
9 Mon.	4 vs. 3;	2 vs. 1	
11 Wed.	1 vs. 4;	2 vs. 3	
13 Fri.	1 vs. 3;	4 vs. 2	
16 Mon.	1 vs. 2;	3 vs. 4	

Netmen Beaten By Howard 4-2 In First Match

by Art Binz

The Drew tennis team opened its season Wednesday against Howard University and lost 4-2 on the Young Field Courts. One of the victories was provided by Ed Chestnut who after losing the first set 0-6, found his stride and relied on experience to capture the next two sets 6-4, 6-2. The other victory of the afternoon came on court three as Craig Wilkinson, playing from the third slot fought a 2 hour marathon against Howard's Smith. This match was almost entirely a defensive battle as both boys played a cautious game waiting for the other to err. Smith took the first set 8-10, but Craig rallied to win the second 6-3 and seemed to grow stronger as the match progressed, winning the final set 6-2.

The other two singles matches were won by Howard as Dave Poultney and Don Anderson bowed to Christian and Callender respectively. Dave seemed to have trouble with his serve and thus had to let up somewhat in order to avoid double-faulting. Don Anderson, playing in the 4th slot, took an early 4-2 lead in both sets but tired thereafter to succumb 6-4, and 6-4.

Howard then swept both doubles matches as Alston and Christian combined to defeat Chestnut and Poultney and Bob Bredin and Mike Toorock lost the second doubles match, 6-3, 6-3.



Ed Chestnut Makes A Smooth Return of Service In Match He Won 0-6, 6-4, 6-2 in Net Battle Against Howard

Tennis Squad Notches First; Roll Over Moravian By 7-2

by Larry Day

The Ranger tennis squad rolled over the Greyhounds of Moravian 702 Friday afternoon in a match played on the Drew courts. In notching its first victory of the season, Drew picked up four of the six singles matches and all three of the doubles matches.

In the singles matches, Ed Chestnut playing first singles faced an extremely tough opponent, Ed lost the hotly played match in straight sets 6-3, 7-5. In the number two singles, the Drew fans saw some fine play by Dave Poultney, who took his match in straight sets, 6-1 and 6-3. In the win Dave showed the fans some fine shots and some fine net rushing. In the second set, although down three games to two,

Commuters Capture Volleyball Title, 5-0

As the intramural volleyball season closed last week, the Commuters as usual were perched firmly atop the league. Led by Andy France and Ed Chestnut they swept all competition aside finishing with five wins and not a single defeat. They needed only eleven games to chalk up their five victories, taking four of their matches by a 2-0 score. The Commuters won 8 of the 9 games they actually played and picked up two more by forfeit.

In the final matches, Bob Spicer's team edged the All-Stars in a pair of hard fought contests 15-7, 11-15, 15-7 and also shaded Bill Long's team, 9-5, 15-10, 16-14. The All-Stars and Commuters were also victors over Long's team by 15-12, 15-13 and 15-7, 15-2 scores respectively.

Rocketmen Wallop Pace 6-3 Poultney Flashes Sharp Form

The Ranger racketmen ran up their second straight victory walloping visiting Pace 6-3 Saturday afternoon. Dave Poultney starred in the victory, winning his No. 2 singles match 6-0, 6-1 and teaming with Ed Chestnut to take the first doubles 6-1, 6-0. In both matches Poultney flashed fine form and an aggressive game.

In No. 1 singles Ed Chestnut took the first set and played brilliantly in bursts but had trouble with his overhead shots and eventually succumbed to the over all consistency of Pace's Ed Schwartz 5-7, 7-5, 6-4. Craig Wilkinson playing third singles suffered his first defeat of the year as he just couldn't seem to get going and lost 6-2, 6-2.

The Rangers swept the last

Dave came from behind to win 6-3. In the third singles, Craig Wilkinson, feeling out his opponent, lost the first set 4-6, but came back to win the match by taking the last two sets easily, 6-3 and 6-4. On the fourth court Don Anderson dropped a well played match 7-5 and 6-3. The fifth singles saw Bob McCoy win his match handily in straight sets 6-4, 6-4. In the sixth singles Peter Cain playing consistent tennis also won his match in straight sets, 6-1, 6-3.

In the doubles matches Chestnut and Poultney won the first doubles in straight sets 6-3 and 6-1 showing a fine ground game and good teamwork. On the second doubles court Craig Wilkinson combined with Mike Toorock to win a hard fought match, 7-5, 3-6, 6-0. The third doubles contest saw Bob McCoy team up with Bob Bredin to win easily, in straight sets 6-4, 6-4.

RENSSELAER BEATS DREW 9-3; HAYWARD, CATLIN LEAD TEAM

by George Littlejohn

The Drew Rangers travelled to Troy, New York, where they met the Engineers of R.P.I. on Friday, April 22. Final score: R.P.I. 9, Drew 3.

In the second inning, with R.P.I. leading by one run, Ron Saldarini lined a clean hit to center but was left stranded. R.P.I.'s half of the second featured a tremendous diving catch by Bob Catlin in

right field for the third out.

The third inning proved to be the big one for Drew as they put together walks, a hit, and smart baserunning to score all three of their runs. J. J. Wolfson started it off by drawing a walk. He advanced to second on a single by pitcher Dick DelGuidice. Catlin walked to load the bases. George Hayward then walked to force in the first run. The R.P.I. pitcher seemed to be falling apart as he walked Saldarini to force in another run. Drew scored its third run of the inning as George Hayward took advantage of a lax R.P.I. team and scored all the way from second base as a play was being made for Lyn Smith at first. At this point the Rangers held a 3 to 1 lead.

R.P.I. gradually surged ahead on three runs in the fourth, two in the fifth and three in the sixth.

In Drew's sixth George Hayward put on another fine show of baserunning as he stole second and then amidst R.P.I. confusion raced to third. In that same inning with R.P.I. at bat Bob Catlin made another sparkling catch in right.

The game was called at the end of the seventh with R.P.I. the winner 9-3. DelGuidice and Dick Stafford pitched very well for Drew, but the Rangers' hitting and fielding were off.

Coffey Goes Nine Innings; Errors Hurt In 10-3 Loss

By Adam Kaufman

Rider College arrived a little late Saturday but the lack of batting practice did not seem to hinder them. Rider pounded out fifteen hits and took advantage of eight errors in romping over the Ranger nine 10-3. Brian Coffey went all the way for the hapless Drew squad. Bob Andrews and "Tex" Thompson shared the victory for Rider.

The first two innings went by harmlessly both teams threatening mildly. However, the top of the third arrived and the sun went behind the clouds for the Rangers, an omen for the entire game. A walk, a force, a stolen base, two singles, two errors and a double brought in three runs for the Rider team. Coffey settled down again and scattered hits, but was effective for two more innings. Again the defense collapsed and Rider picked up two runs.

Rangers To Engage NCE On Saturday In Baseball, Tennis

The coming week will be a big one in sports for the Rangers. To cap the week's action the Green and Gold will take on their traditional rivals the N.C.E. Highlanders in baseball and tennis in the day at Drew program Saturday afternoon with Drew rating a slight edge in both contests.

The tennis team will be host to Upsala on Wednesday afternoon. The Vikings, a perennial tennis power are quite likely the toughest opponent on this year's schedule.

Mid-week the baseball team will head north to engage Ithaca and Union on Wednesday and Thursday. In the first game of the trip, the Rangers move into the big time against powerful Ithaca, who last week beat Seton Hall 17-0 and Adelphi 11-7. On Thursday however, they will be favored to beat Union.

Drew appeared to be on the move when the bases were loaded on three straight walks, but the only earned runs occurred on another walk and a force. A wild pitch brought in the other. From then on in the Rangers did not put together anything that resembled an offense, that is except with fists.

In the top of the seventh Rider put together a single and a walk with one out. Then the pyrotechnics started with a ground ball to Sorensen who flipped to Hayward. As George cocked his right arm throw, Kunkle, the Rider third baseman, grabbed him. Fists flew, benches cleared and mayhem reigned supreme. As the dust cleared the umpire decided that one run had crossed the plate.

In the top of the ninth Rider took advantage of poor defense to again cross the plate. This time for four runs. Sorensen, Coffey and Catlin struck out to end the game.

DREW

	ab	r	h	rbi
Catlin CF	5	0	0	0
Swan LF	4	0	0	0
Hayward SS	3	1	1	0
Saldarini RF	4	0	1	0
Smith 1st	2	1	0	0
Marcus 3rd	2	1	0	0
Littlejohn C	3	0	0	1
Sorensen 2nd	3	0	0	1
Coffey P	3	0	0	0
	29	3	2	2

RIDER

	ab	r	h	rbi
Sabatini 2b	6	2	2	1
Machs CF	6	0	4	1
D'Narto C	6	1	1	1
Powers LF	6	0	1	1
Marant RF	5	2	2	1
Pilger 1st	5	1	2	1
Vidja SS	4	2	2	0
Kunkle 3rd	4	2	1	0
Andrews P	1	0	0	0
Thompson	2	0	0	0
	45	10	15	6